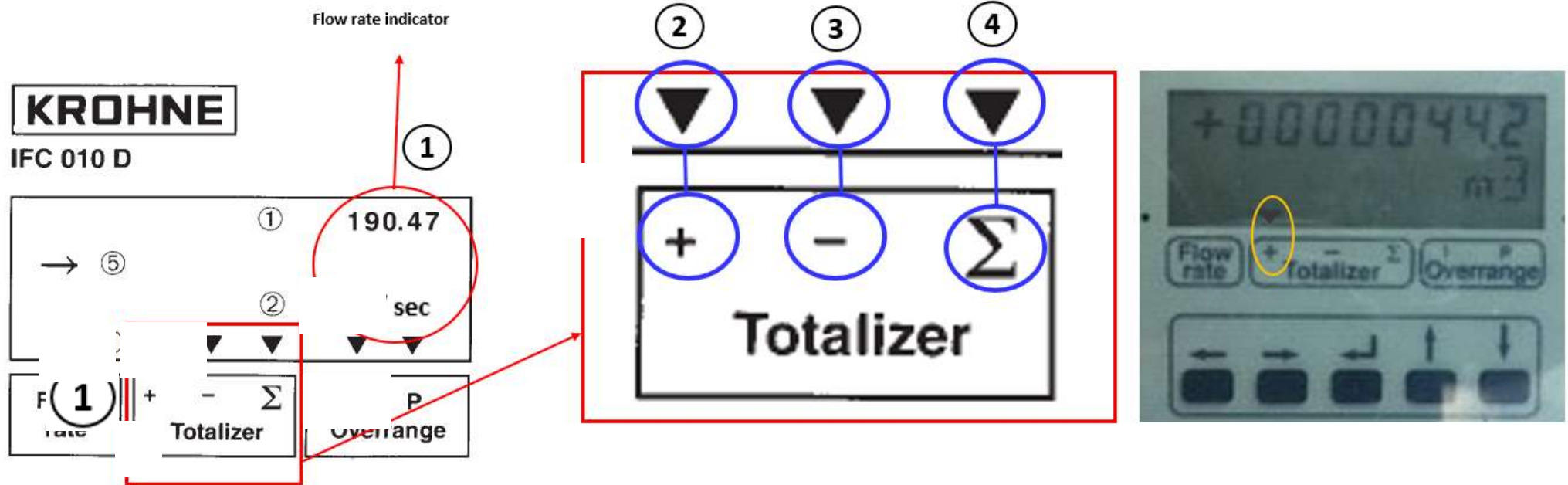


## KROHNE MAGFLOW KMS IFC010D making sense of the display

As you have described it the way this is currently set up the LCD scrolls to 4 different readings I am not sure what order but let's call it 1 – 4 as labelled below. You will see small arrows appearing at bottom of the LCD (circled blue) that point to which reading is being displayed with No. 1 Flow Rate, No. 2 positive counter, No. 3 the negative counter and No. 4 which is the sum of + and – (nett). Please concentrate on reading no. 2 the + counter circled in yellow on actual screen to right.



**ManuFlo**™

(c) Manu Electronics 2021