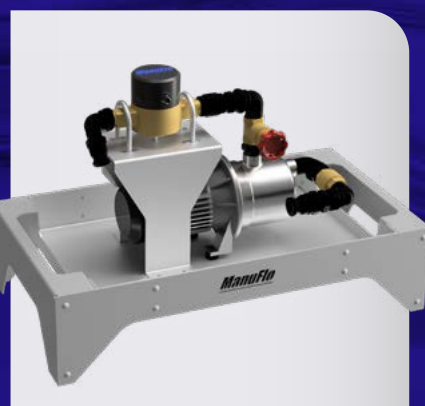




PRODUCT CATALOGUE

2025



- **Admixture Dispenser**
- **Flowmeters**
- **Dosing Equipment**
- **Instrumentation**

Who We Are

EXPERTS IN ADMIXTURE DISPENSING EQUIPMENT

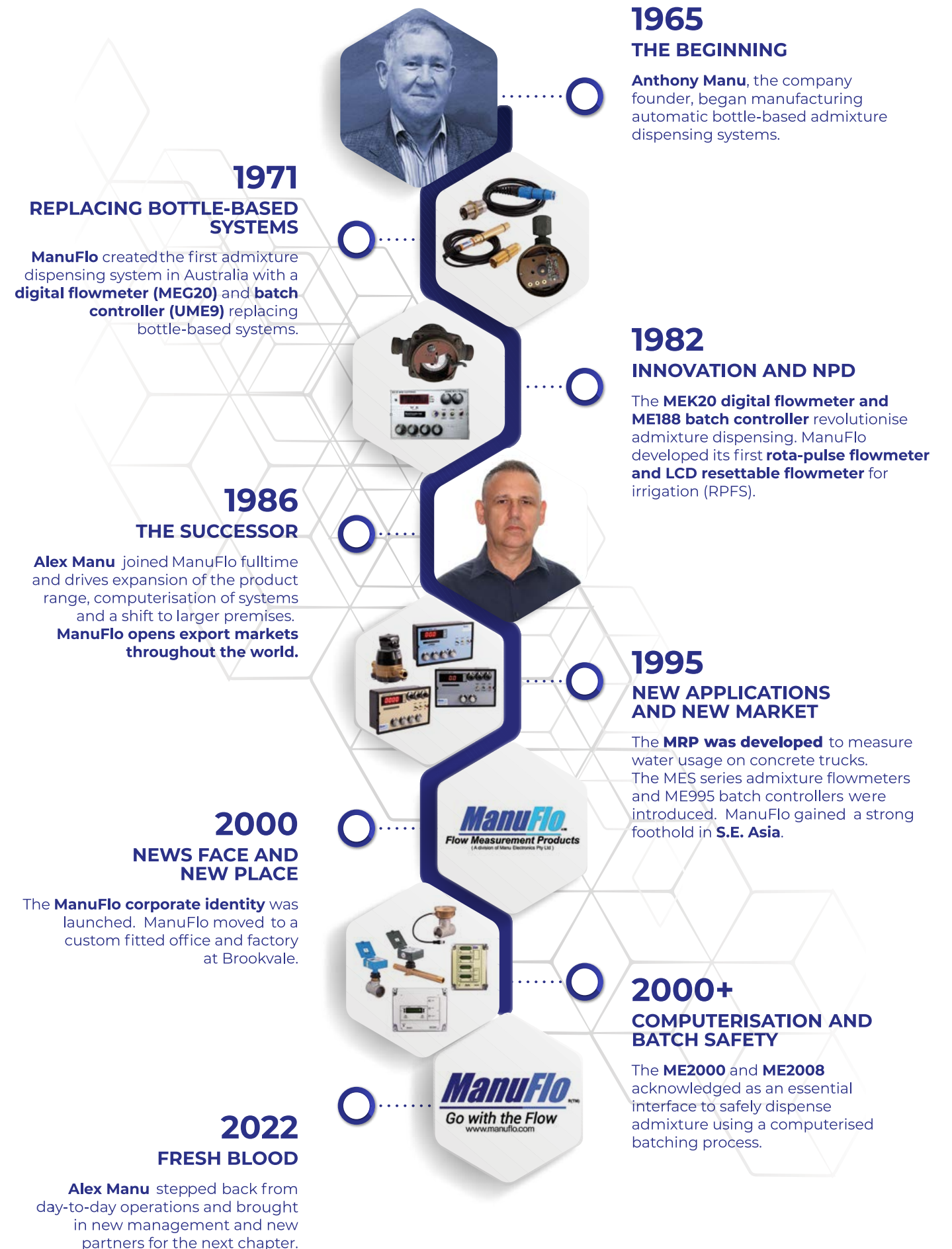
Founded by Tony Manu in 1965, ManuFlo Pty Ltd specialises in designing and manufacturing process control and measurement instrumentation for the concrete construction chemical additives industry. With decades of expertise, ManuFlo has become a leader in admixture dispensing equipment.

ManuFlo offers a wide range of products, including various types of flowmeters (paddlewheel, positive displacement, multijet, turbine, oval rotor, and electromagnetic) and instrumentation such as preset batch controllers, flowrate totalisers/indicators, pulse scaling cards, and PLC safety batch interface cards.

ManuFlo remains an Australian-owned company with experienced staff providing expertise and application advice. Most standard products are available ex-stock, ensuring quick delivery. The company also has a wet test flow calibration facility to verify the accuracy of its flowmeters, further cementing its commitment to quality and precision in admixture dispensing equipment.



THE MANUFLO STORY



01

About ManuFlo

Who We Are
The ManuFlo Story

02

Dispensing And
Metering Solutions
page 8

Concrete Plants Systems 9

Admixture Dispenser 11

- Monitoring Solutions For Admixture Dispensers 12
- Admix Batching Systems For Concrete Batch Plants 14
- Portable Trolley Admixture Dispenser 16
- TMP Auto Batching Custody Transfer Ticket Printer System 18

Water Batching 21

- Water Batching Systems For Concrete Batch Plants 22
- Slump Stand Flowmeters 24
- Agitator Trucks Meters / Telematic Application 26

Special Applications 31

- Shotcrete Admixture Flowmeters 32
- Grout, Oxide, And Slurry Flowmeters 34
- Wastewater 36
- Water Studies 38
- lot / Datalogging 40

03

Instrumentation
page 44

Flow Instrumentation Components 45

- Batch Controllers 48
- Plc/Computer Interface Batch Products 52
- Flowmeter Interface Pulse Scaler Cards 54
- Flow Rate Displays and Totalisers 56

Flow Switches 63

04

Accessories
page 152

Flowmeters 67

- Variable Area Flowmeters 68
- Insertion Impeller Meters 70
- Positive Displacement Flowmeters 76
- Oval Gear Flowmeters 88
- Ultrasonic Flowmeters 90
- Turbine Flowmeters 92
- Coriolis Flowmeters 100
- Mini Electromagnetic Flowmeters 102
- Electromagnetic Flowmeters 112
- Pipe Adapter Fitting 130
- Connection Kits 132

Pressure Sensors 133

Level Sensors 143

Pumps 154

Filters. Y-Strainer Cartridge 155

Valves 156

- Gate Valves 156
- Check Valves 156
- 3-Way Ball Valves 156
- Solenoid Control Valves 158

Electrical Accessories 159

05

Services And
Calibration
page 161

161

06

ManuFlo Advantages

ManuFlo Advantages
Conditions of Sale

New Releases



MES HD

Our latest innovation designed to meet the rigorous demands of industrial environments. This series elevates the performance of flow measurement technology by offering unparalleled durability and ease of use.

KLM 76

A versatile capacitance level switch designed for both hygienic and industrial applications, featuring IO-Link communication for quick and easy configuration.



FL6700

Designed to meet the stringent requirements of the food and beverage industry, featuring a hygienic design suitable for SIP processes.

KPS 605

Designed for advanced process pressure and hydrostatic level applications. Featuring a robust design with a corrosion and abrasion-resistant ceramic diaphragm, it offers exceptional durability.



Ordering from ManuFlo

You can call, email, or place an order online. Alternatively, feel free to visit our office to chat with our friendly staff.



Order Processing

Orders will be processed for immediate delivery (subject to stock availability) for open-account customers. For cash-only customers, orders will be processed once payment is received.



Credit Accounts

To open a credit account with ManuFlo, please download the Account Application form from our website and email it back. We aim to open your account within one working day.



Ordering Codes

Please provide the complete ordering code for each required product when placing an order. This helps us ensure the most prompt and efficient service. If we need further information, we will contact you.



Payment Methods

We accept various payment methods, including EFTPOS (Electronic Funds Transfer at Point of Sale), Visa, and MasterCard.



Shipping

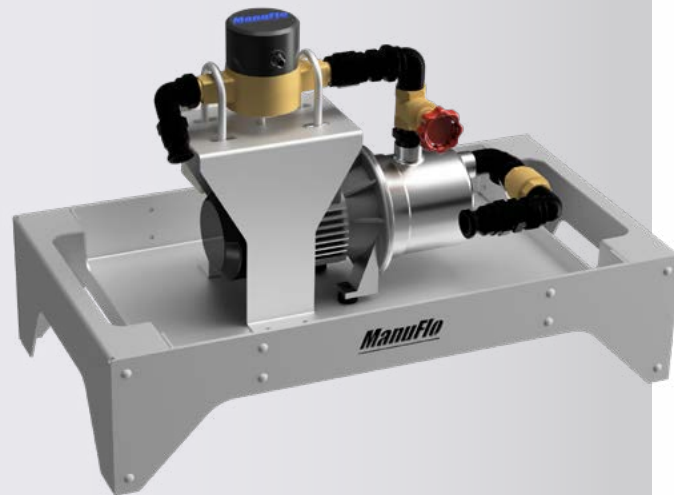
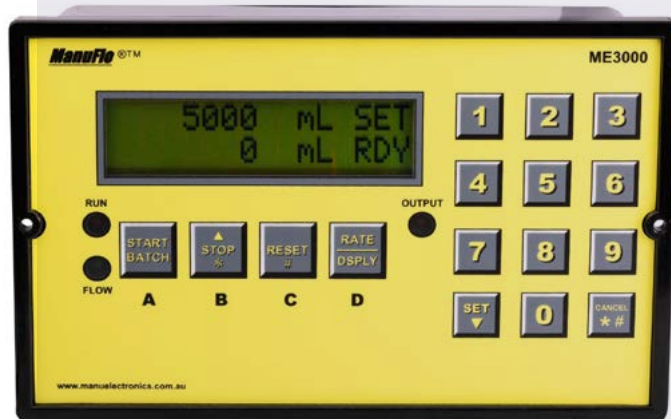
Shipping costs are separate and borne by the purchaser. We use reputable courier services for deliveries within Australia and internationally. For larger packages, we will investigate the best shipping options. For international shipping, we prefer to use DHL.



Address Details

Please ensure you provide a complete physical address for delivery. Incomplete delivery addresses will result in delays in dispatching your order.

Dispensing and Metering Solutions



ADMIXTURE DISPENSER p.11



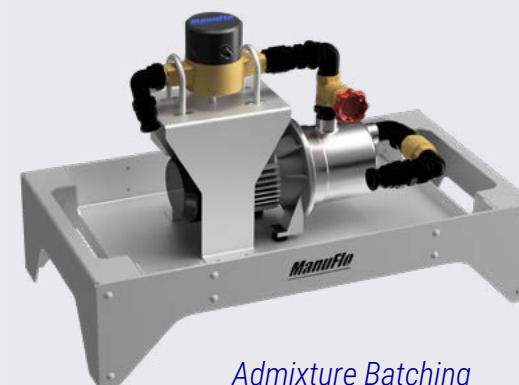
WATER BATCHING p.21

Dispensing Metering Solutions

ManuFlo's Dispensing and Metering Solutions are designed to provide precise, reliable dosing of chemical admixtures, ensuring consistent concrete quality and improved production efficiency.



MRT20

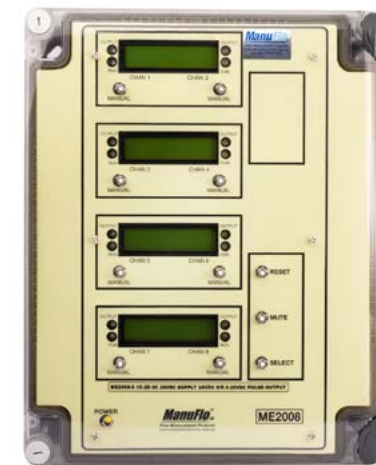


Admixture Batching System

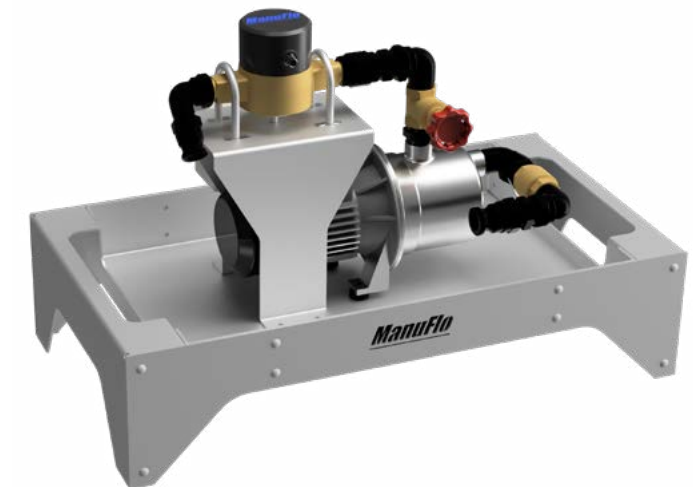


Portable Trolley Batch System

Concrete Plant Systems Admixture Dispenser



**Monitoring Solutions
For Admixture Dispensers**
PAGE 12



Admixture Batching System
PAGE 14



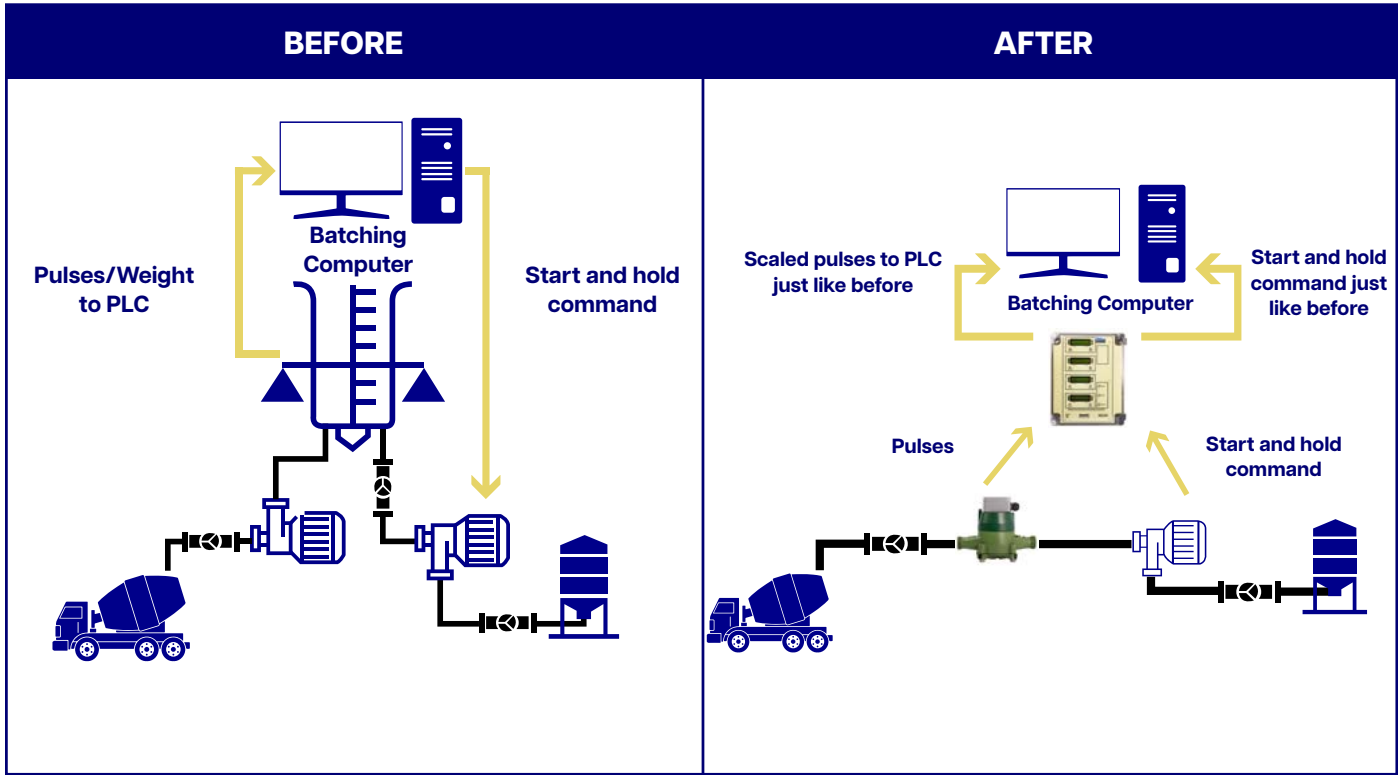
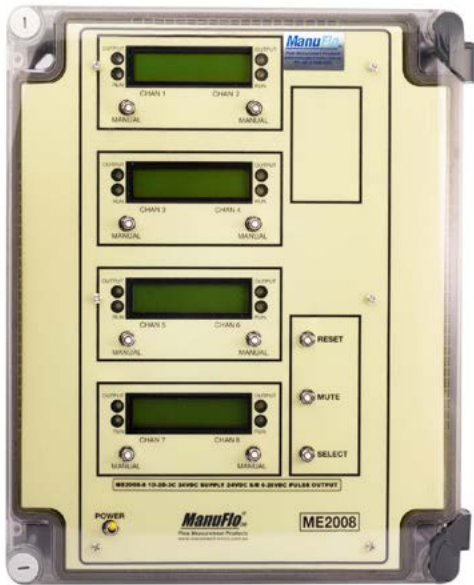
Portable Trolley Batch System (PTBS)
PAGE 16



TMP
PAGE 18

Monitoring Solutions For Admixture Dispensers

The **ManuFlo ME2008** streamlines admixture batching by precisely monitoring each batch to prevent dosing issues, ensuring consistent quality with minimal waste. Well-established in the market, it reduces the need for additional equipment on-site and cuts down on the maintenance required for dosing bottles. The ME2008's accuracy and integration capabilities enhance process efficiency, making it an invaluable tool for reliable admixture management.



Monitoring Solutions For Admixture Dispensers



ITEM	ORDER CODES				SPECIFICATIONS
Model	ME2008				Microprocessor Interface Batch Safety Unit (inbuilt rate +inventory totals) <ul style="list-style-type: none"> Accepts most flowmeter types. Interfaces with computer/PLC systems Dot-matrix dual LCD counters, 4x plug-in dual-channel modules Variable pulse divisions, AC triac or DC opto output pulse switching with pulse limiter Wall mount enclosure with a handheld plug-in keypad programming module Manual batching facility on the front panel
Number of Channels		2-CV			2 channels (2 admixtures) on motherboard
		4			4 channels (4 admixtures) on motherboard
		6			6 channels (6 admixtures) on motherboard
		8			8 channels (8 admixtures) on motherboard
Supply voltage - Motherboard			-1A		240 vac power supply (with new high pwr Torriod Transformer and pwr regulator)
			-1B		110 vac power supply (with new high pwr Torriod Transformer and pwr regulator)
			-1C		24 vac power supply (with new high pwr Torriod Transformer and pwr regulator)
			-1D		24 VDC power supply (with new high pwr regulator)
Start input/ output drives and master reset (modules)			-2A		240 vac start/reset relay logic fitted
			-2B		110 vac start/reset relay logic fitted
			-2C		24 vac start/reset relay logic fitted
			-2D		24 VDC start/reset relay logic fitted
Pulse Output				-3A	240 vac Moc3041 triac pulse output switching (only with '1A' 240 vac power supply option)
				-3B	Same AC voltage as for the start/reset option (i.e. 24 vac or 110 vac)
				-3C	5-30 VDC open collector pulse output. Suits Jonel/ Compubatch/Autocon computers

Admixture Batching Systems (ABS)

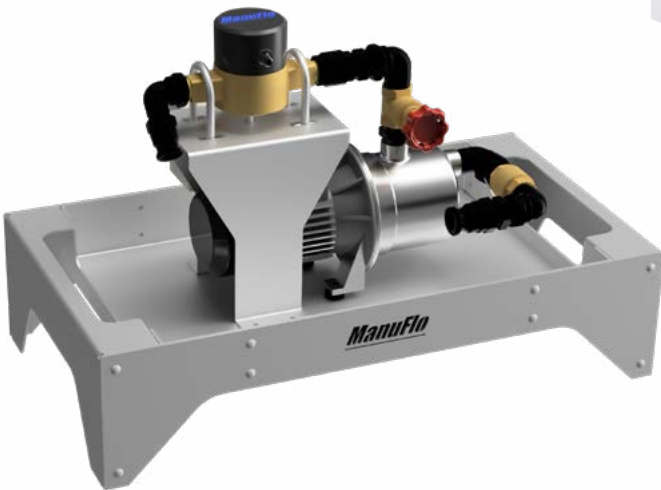
The **ManuFlo Admix Batching System (ABS)** has been developed to simplify admixture dispenser installation and provide flexibility. This pre-wired, pre-tested, and ready-to-use system is designed to deliver consistent flow and pressure for concrete admixtures.

KEY FEATURES:

- Pump:** Single-stage, jet-assisted centrifugal pump for high pressure and dependable performance with minimal maintenance
- Flowmeter:** Equipped with MES HD Series or Minimag Flow Series flowmeters for accurate liquid measurement
- Valves:** An adjustable valve controls flow, and a non-return valve ensures measured admixture flows directly into the concrete mix
- Maintenance Case:** Comes with an easy-maintenance aluminium case for durability and convenience

PUMP UPGRADE OPTIONS:

- Positive Displacement Pumps (PDP):** Options include Mono and Onga pumps with various flow rates and connections



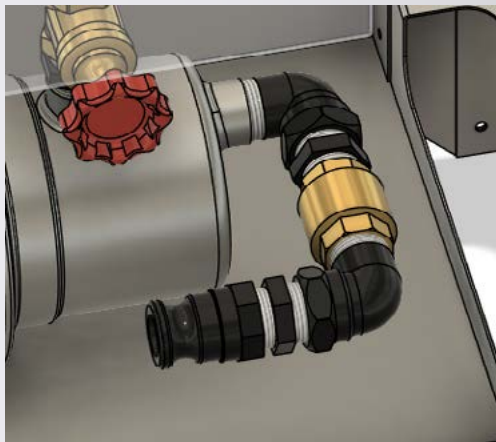
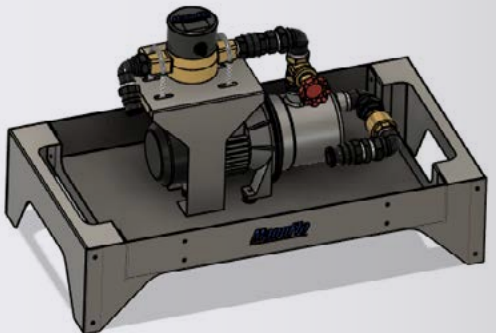
FLOWMETER OPTIONS:

- MES20-NE:** 20mm nutating disc PD flowmeter (1.5 - 75 L/min)
- MES25:** 25mm nutating disc PD flowmeter (2.7 - 112 L/min)
- CMM25:** 25mm electromagnetic flowmeter (5.0 - 250 L/min)

SPECIFICATIONS:

Flow capacities to	80 lpm
Pressure heads up to	42m
Max. operating pressure	600 kPa
Max. incoming (suction) pressure	140 kPa
Max. ambient temperature	50°C
Max. water temperature	45°C
Min. water temperature	1°C
Single phase (supplied with 3 pin plug)	1x230V 10%
Frequency	50Hz
Protection (motor)	IP55
Suitable funds	Clean potable water of neutral pH containing no solids or abrasives

Admixture Batching Systems (ABS)



ITEM	ORDER CODES		SPECIFICATIONS
Model	ABS		A flexible, ready-to-use admixture dispenser with a high-performance pump, precise flowmeters, flow control valves, and a durable, easy-maintenance aluminium case
Flowmeter Options		MES20N-HD	20mm pulse-out low-profile flowmeter
		MES25-HD	25mm digital pulse output flowmeter
		CMM25	25mm MiniMag (20mm ID bore)
Pump Upgrade Option		PPD	Positive Displacement Pump options, ideal for higher S.G. chemicals and faster flow delivery requirements
OPTIONS	A20/300	20mm Polyprop. Y-strainer Filter, with 300 micron nylon filter cartridge 3/4" BSP-m	
	D20	20mm Brass Diaphragm solenoid valve with 6.8w electric control coil N.C.	

Portable Trolley Batch System (PTBS)

The **ManuFlo Portable Trolley Batch System (PTBS)** is a ready-to-use solution for automatic liquid batching. It is powered by 240 VAC and designed for easy deployment in various industrial settings, particularly for handling non-corrosive admixtures. It is ideal for batching S.G. chemicals and fast flow delivery requirements. Its robust design and versatile options make it suitable for various industrial liquid batching needs.

KEY FEATURES:

- **Trolley Design:** This lightweight, mobile two-wheel trolley has a non-return valve, gate service/restriction valve, and barrel unions. It also features cam locks for easy pipe connection
- **Durable Construction:** HB2510 IP65 housing with stainless steel hinges
- **Centrifugal Pump:** Davey SJ35-04 pump with 1" BSP-F connections, 40 L/min flow rate, and up to 25 metres head height
- **Compact Dimensions:** Measures 1300mm high, 530mm wide, and 460mm deep

BATCH CONTROLLER OPTIONS:

- **ME3000 Keypad Batch Controller:** Fully programmable with optional RS232 port
- **ME995-7D Rotary Dial Batch Controller:** Easy and precise control



PUMP UPGRADE OPTIONS:

- **Positive Displacement Pumps (PPD):** Options include Mono and Onga pumps with various flow rates and connections

FLOWMETER OPTIONS:

- **MES20-NE:** 20mm nutating disc PD flowmeter (1.5 - 75 L/min)
- **MES25:** 25mm nutating disc PD flowmeter (2.7 - 112 L/min)
- **CMM25:** 25mm electromagnetic flowmeter (5.0 - 250 L/min)

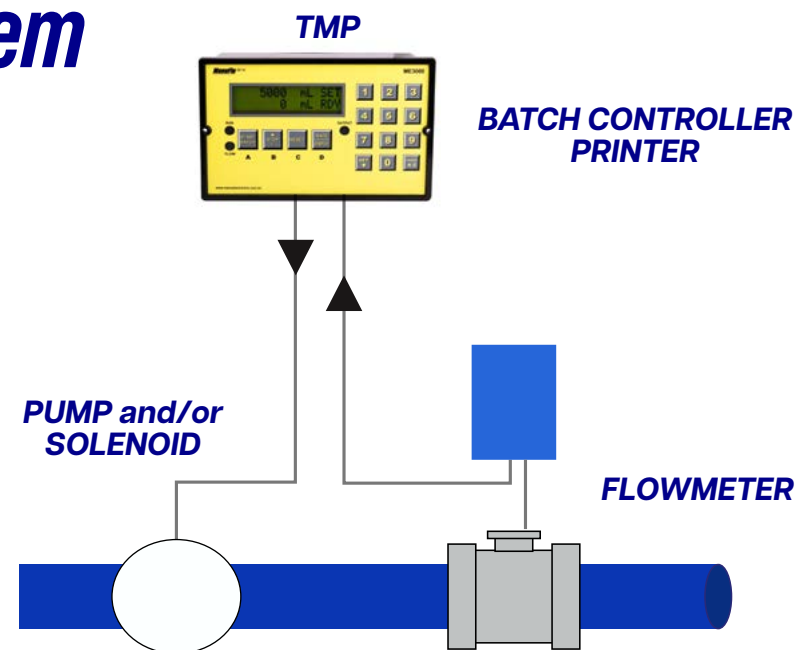
Portable Trolley Batch System (PTBS)



ITEM	ORDER CODES		SPECIFICATIONS
Model	PTBS		Portable Trolley Batch System (PTBS)
Batch Controller Options		M3000	<ul style="list-style-type: none"> • 6 digit LCD Microprocessor Batch Controller. Panel mount type • Front keypad IP64 • Displays batch in ml/litres/kl/grams/kg/US gallons • Flowrate display • Fully programmable e.g. input pulses/Litre (K-factor). Batching safety features • 240 vac I/O. With logic, pulse, and current output options • Ticket print quantity is programmable e.g. can print double tickets
		ME3000-FP	RS232 port on front of Controller (includes RS232 to USB converter cable)
		ME995-7D	LITRES 999.9 maximum, with decimal point and K-factor calibration x1
Flowmeter Options		MES20N-HD	20mm pulse-out low-profile flowmeter
		MES25-HD	25mm digital pulse output flowmeter
		CMM25	25mm MiniMag (20mm ID bore)
Pump Upgrade Option			PPD
			Positive Displacement Pump options, ideal for higher S.G. chemicals and faster flow delivery requirements

TMP Auto Batching Custody Transfer Ticket Printer System

The **ManuFlo TMP Auto Batching Custody Transfer Ticket Printer System** combines the ME3000 Batch Controller with a magnetic flowmeter, all housed within a secure enclosure and paired with a high-quality printer for generating custody transfer tickets. This system automates batching processes, providing precise measurement and verifiable documentation for custody transfers. Ideal for concrete plants and similar batching applications, the TMP system ensures reliable, tamper-proof record-keeping and meets industry standards for accurate custody transfer operations.



CONTAINS:

- **ME3000 Batch Controller (or soon with optional ME999)**
 - 6 digit LCD Microprocessor Batch Controller Panel Mount IP64
 - Front keypad. Displays in ml/L/kL/Gal with decimal point
 - Number of batch ticker copies is user programmable
 - Fully programmable functions. With logic, pulse and current output options
 - with RS232 serial connector for ticket printer output (date/time/ batch)

CONTAINS:

- **TTP-A5**
 - Thermal ticket printer with power supply
 - For custody transfer dockets
 - All wired and mounted in an IP64 lockable powder coated steel box

TMP Auto Batching Custody Transfer Ticket Printer System



ORDER CODES		SPECIFICATIONS
TMP-DC		ME3000 Batch Controller and TTP-A5 printer, fully wired and mounted in a hinged lockable box 12-24VDC powered
TMP-AC		ME3000 Batch Controller and TTP-A5 printer, fully wired and mounted in a hinged lockable box 240vac powered
OPTIONS	-FP	Optional front RS232 port, so batch log can be downloaded to a laptop Includes DB9 serial to USB converter for laptops without a serial port
	-ESS	Stainless Steel 316 enclosure, instead of powder coated (300mm W x 400mm H x 200mm D)
	-USG	Display in US Gallons and 110vac powered system
	UPS-DC	Uninterruptable Power Supply 24vC to 14.5VDC 4.5 Ah 3 hours backup 1.5A
	UPS-AC	Uninterruptable Power Supply 24v0C to 14.5VDC 4.5 Ah 3 hours backup 1.5A
SPARES/ACCESSORIES	T-TP50	Thermal paper for TTP-A5 thermal ticket printer (box of 50 rolls)
	T-TP	Thermal paper for TTP-A5 thermal ticket printer (single roll) 57x46mm (52g)
	TTP-A5	Thermal Ticket Printer 9600 baud 5-9 VDC powered Suitable for custody transfer dockets for ME3000-SC Without power supply (power supply is a separate item)
	T-ACPS	AC power supply module for TTP-A5 printer Input 240vac, output 5VDC. 3 Amp
	T-DCPS	DC power supply module for TTP-A5 printer Input 12-24vac, output 5VDC. 3 Amp

Concrete Plant Systems Water Batching



**Water Batching Systems
For Concrete Batch Plants**

PAGE 22



Slump Stand Flowmeters

PAGE 24



**MRT20-T2 For Agitator Trucks Meters
and Telematic Applications**

PAGE 26



**MRP20-T2 For Agitator Trucks Meters
and Telematic Applications**

PAGE 28

Water Batching Systems For Concrete Batch Plants

The **ManuFlo Classic Concrete Plant** setup combines the precision of the ME995 Batch Controller with the reliability of the RPFS Insertion Paddle Wheel for efficient, accurate, and consistent batching. This system is designed to streamline operations and enhance control over the batching process, ensuring high-quality concrete output every time.

ME995 BATCH CONTROLLER:

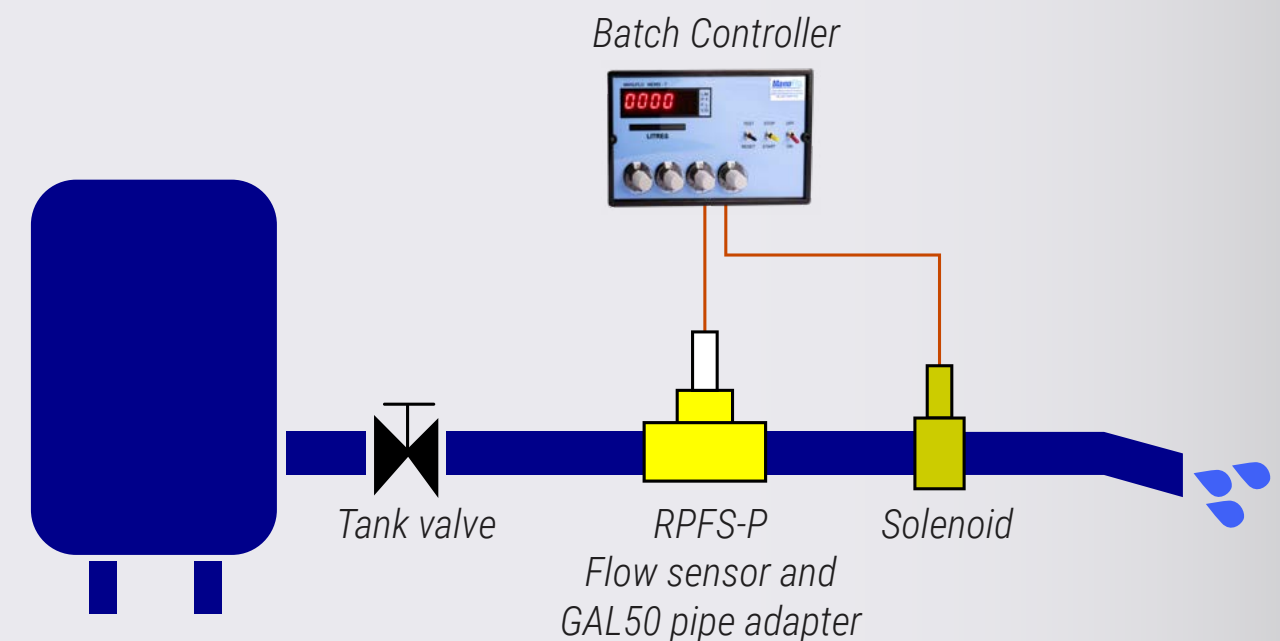
- **Batch Controller:** The ME995 offers precise batch control, providing operators with real-time data and adjustable parameters for each batch. Known for its user-friendly interface and robust construction, the ME995 ensures consistent mix accuracy, making it ideal for demanding concrete plant environments.



RPFS INSERTION PADDLE WHEEL:

- **Insertion Paddle Wheel:** The RPFS paddle wheel flow sensor measures water flow with high accuracy, ensuring precise dosing within the mix. Its insertion design allows for easy installation and maintenance, and it delivers consistent readings, even in variable flow conditions, ensuring optimal water-to-cement ratios.

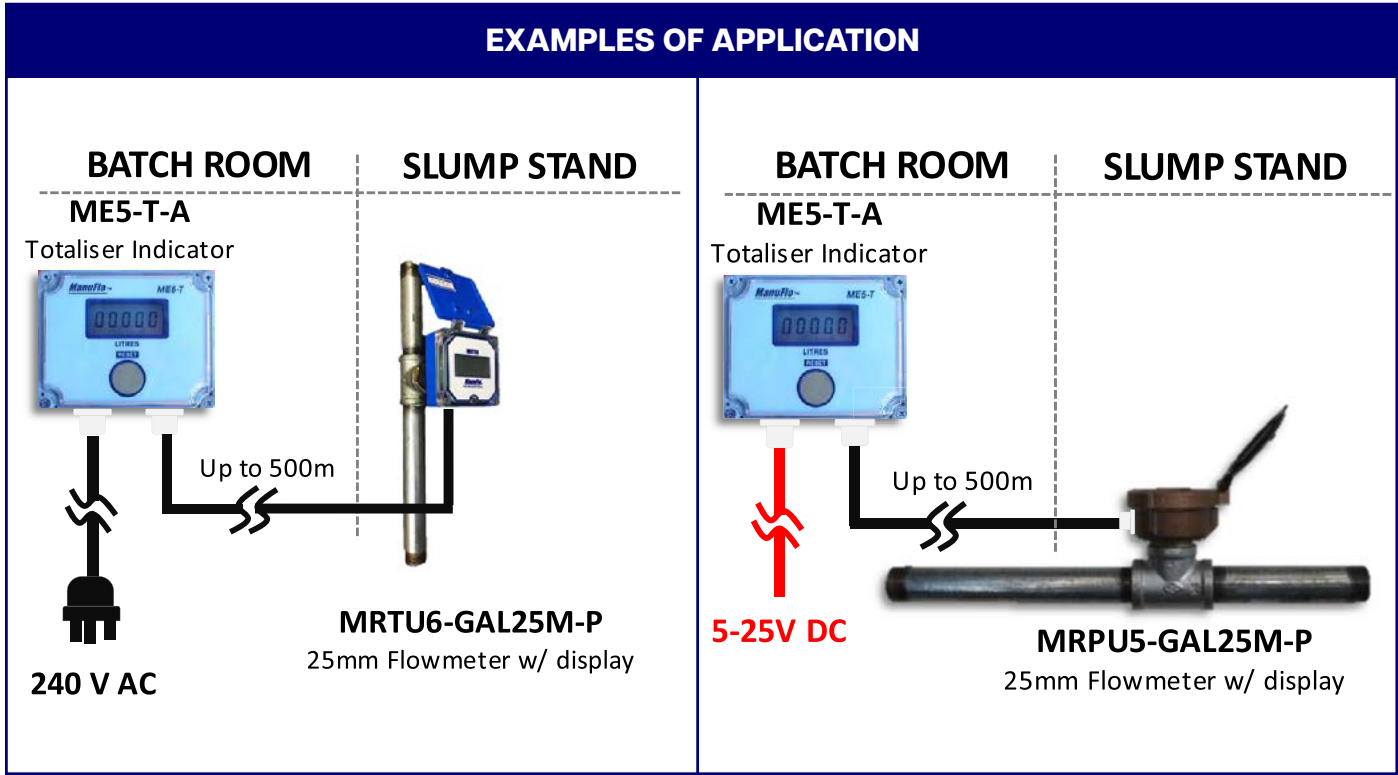
Water Batching Systems For Concrete Batch Plants



ORDER CODES	DESCRIPTION
MWBS	Classic Concrete Plant Water Batch System: ME995-7 Batch Controller, RPFS-P Flow Sensor, GAL50 Pipe Adapter
	OR create your own system with alternate and/or additional components: <ul style="list-style-type: none"> • Batch Controller: panel mount type with optional housing enclosures • Interface options: to PLC/Computers • Flow Sensor: insertion RPFS-P type with various pipe size adapters • Magflow type: for recycle/slurry water • Add solenoid valves, signal cable

Slump Stand Flowmeters And Systems For Batch Plants

ManuFlo's Slump Stand Flowmeters and Systems are designed specifically for batch plants, providing accurate and efficient water measurement for achieving the desired concrete slump. These systems ensure precise dosing, helping operators maintain consistency and quality in concrete production by controlling water flow to meet specified slump requirements in every batch.



Slump Stand Flowmeters And Systems For Batch Plants



ORDER CODES		DESCRIPTION
MRTU4-GAL25-T2		25mm Resettable LCD insertion Bat.pwr. Flowmeter (20 to 200 LPM) (1"bsp.m galvanised pipe connection ends)
-P		Pulse output option via M12 plug-set. (for future pulse transmission to batchroom)
OPTIONS	ME5-T-D-P with AMM25	5-digit LCD litres -remote IP65 counter with heavy duty total reset button wired via 2mtrs cable AMM25 25mm MAGFLOW flowmeter (5 to 200 LPM) 12vDC pwr, 12vDC to meter (with pulse output for future re-transmission of pulse to batchroom)
	-A	240vac powered display unit in lieu of DC
ORDER CODES		DESCRIPTION
DSSS-1		Dual Slump Stand / Batch Room System Water measurement system packaged wired: 1x MES-T-D batchroom counter, 12-24VDC powered, DC pulse output to PLC 1x MRTU4-P int.bat.pwr. flowmeter with integral reset total display and pulse output via M12 Ip67 plug-set 2mtr lead, 1x GAL25-T2 pipe fitting
OPTIONS	-A	240vac powered ME5-T counter (in lieu of DC pwr)
	-AMM25	25mm (18mm ID bore) Magnetic Flowmeter (in lieu of MRTU4-P)
	UIC-DC	Universal interface scaling card feed pulses to DC computer inputs
	UIC-AC	Universal interface scaling card feed pulses to AC computer inputs

MRT20-T2

LCD Reset Counter Concrete Truck Flowmeter

KEY FEATURES:

- **Robust Design:** Premium ASA-UV-Grey IP66 housing with 3M cover protection and a hinged lid to protect LCD from UV
- **Easy Maintenance:** Slip insertion design for easy removal and cleaning; manual and NFC app recalibration
- **Display:** Large 4-digit LCD reset total (optional 1 decimal place)
- **Flow Range:** 8 - 125 L/min (up to 10 bar)
- **Accuracy and Repeatability:** $\pm 2\%$ at 0.7 - 7 m/s; $\pm 0.3\%$ repeatability; operates up to 60°C
- **Durable:** Marine-grade stainless steel paddle rotor
- **Power:** Internal 3.6V lithium battery (10+ year life)
- **Resilient:** It is unaffected by water hammer, compressed air, mild frozen water, or light recycled water; it will not damage itself if it runs above the maximum flow rate
- **Optional Outputs:** Pulse output via M12 plug set
- **Connection:** 18mm ID bore, gun-metal flow-tube with 3/4" BSP (male) threaded ends



Large 4 digit display with ASA-UV premium thermo industrial grade housing

MRT20-T2

LCD Reset Counter Concrete Truck Flowmeter



ORDER CODES		PRODUCTS
MRT20-T2		INTEGRAL INSERTION 20MM FLOWMETER, integrated digital LCD "Litres" resettable counter flowmeter to 50°C, special purpose flowmeters for concrete trucks, environmentally resistant ASA plastic body with custom gunmetal flow-tube, 3/4" BSP Male threaded pipe connection ends with slip insertion BSP keyway locator and secure poly lock cap
OPTIONS	-P5	Pulse output via M12, IP67 316 stainless steel cable lead plug-set and amp; 10 metre lead, 5mS fixed pulse width, programmable volume amounts/pulse
	-P10	Pulse output via M12, IP67 316 stainless steel cable lead plug-set and amp; 10 metre lead, 5mS fixed pulse width, programmable volume amounts/pulse
	-P15	Pulse output via M12, IP67 316 stainless steel cable lead plug-set and amp; 15 metre lead, 5mS fixed pulse width, programmable volume amounts/pulse
	-D1	Display Total in LITRES to 0.1 increments (pulse output is 0.1/Litre)
	NFC	ANDROID Phone strong NFC signal with Re-Calibration software
	RPFS-M20-T2	Insertion Mini Rota Pulse flow Sensor Output (m12, 5mtr lead) Flowmeter, +3 to 5vdc., with 20mm standard truck flow-tube (no display blind pulse -aprox.100ppl)

MRP20-T2

LCD Resettable Counter

Flowmeters

The **ManuFlo MRP20-T2 Resettable Counter** is designed and manufactured by ManuFlo for use on mobile concrete transit truck mixers (agitators). Constructed of the toughest materials, the MRP20-T2 can withstand the harsh conditions experienced in the premix concrete industry. The gun-metal pipe flow-tube has 20mm (¾") BSP male threaded ends.

KEY FEATURES:

- **Flow Range:** 12 to 120 Litres/minute
- **Accuracy:** ± 2% accuracy (10:1 flow curve)
- **Display Readout** Counter: 4 digits in Litres (L)
- **Power Source:** 3.6v Lithium battery (9+ year typical life)
- **Display:** capsule rating IP65 water and flame resistant
- **Max. operating temperature:** 50°C
- **Max. operating pressure:** 2000 kPa
- **Dimensions (mm):** 270 L x 110 H x 85 W



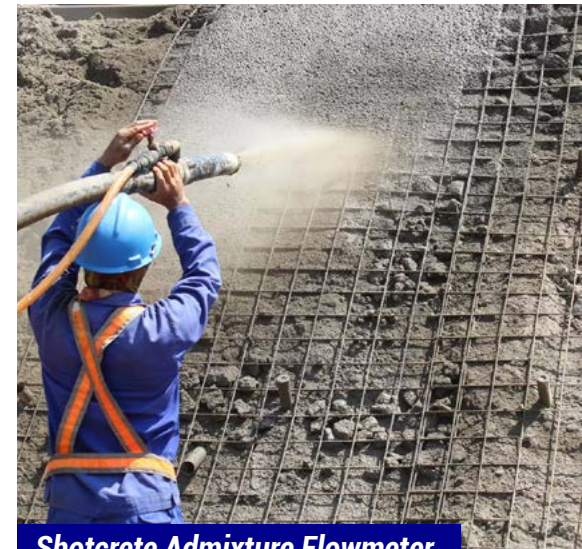
MRP20-T2

LCD Resettable Counter Flowmeters



ORDER CODES	PRODUCTS
MRP20-T2	20mm Digital LCD "Litres" resettable counter flowmeter up to 50°C Gunmetal flow-tube with ¾" BSP(male) threaded both ends
-D1	Display total in LITRES to 0.1 (Note: then when fitted pulse output will also be 0.1 litre resolution)
-P	Pulse output option (1 Litre/1 pulse), with M12 IP67 cable flying lead plug set, 5 metre cable, 100 Hz maximum, 5ms fixed pulse width

Special Applications



Shotcrete Admixture Flowmeter

PAGE 32



Grout, Oxide and Slurry Flowmeters

PAGE 34



Waste Water, Trade Waste and Bore Water

PAGE 36



IoT Applications

PAGE 40

Shotcrete Admixture Flowmeter

ManuFlo provides reliable, high-precision flowmeters specifically designed for **Shotcrete admixture applications**. Our solutions ensure accurate measurement and control, enhancing the quality and consistency of your Shotcrete mixes.



Shotcrete Admixture Flowmeter



ORDER CODES	DESCRIPTION
KMS104F 015F-DC-TRB	<ul style="list-style-type: none"> 15mm electromagnetic flowmeter, for Shotcrete Admixture Integral display shows flowrate and resettable total 11-31 VDC powered ANSI-150 flanged, Hastelloy-C4 electrodes, PTFE liner Flowrange @2% accuracy: 0.5 - 106 Litres/minute To 20000 kPa (20 bar) Pulse and 4-20mA outputs
-R	<ul style="list-style-type: none"> Remote display via 2-metre cable shows flowrate and resettable total

ORDER CODES	DESCRIPTION
SCS-MM15	<ul style="list-style-type: none"> Dosing Admix System complete 24 VDC powered (or 12 VDC step-up voltage converter) Includes FRT303-D-E-BL-VR24 Flowrate/Totaliser Indicator with backlit LCD display and regulated 24VDC output to MM15 1/2" BSP (male) electromagnetic flowmeter to 1600 kPa (17 bar) (flowrange @ 2% accuracy: 0.1 - 25 Litres/min), all wired with 5-metre cable to flowmeter and 1 metre power cord
-SSB	Optional SSB Stainless Steel outer enclosure housing the FRT303 <ul style="list-style-type: none"> 20mm -MM20 (0.2 - 50 LPM) or 25mm -MM25 (0.3 - 100 LPM) flowmeters

Grout, Oxide and Slurry Flowmeters

ManuFlo provides high-precision flowmeters designed for **Grout, Oxide, and slurry applications**, capable of measuring liquids with up to 80% solids. Our flowmeters ensure accurate measurement and control, optimising the consistency and quality of your mixes.



Grout, Oxide and Slurry Flowmeters



ORDER CODES		DESCRIPTION
	KMS302P-025F	<ul style="list-style-type: none"> 25mm electromagnetic flowmeter, for liquid Grout/Oxide/Slurry mixes Integral display shows flowrate and resettable total 90 - 250 vac powered ANSI-150 flanged, hast-C4 electrodes, polyprop liner Flowrange @ 2% accuracy: 1.5 - 295 Litres/minute
	RMS025-M4	25mm Wafer Magflow High Pressure Option to 5100kPa (740 Psi) 38hz coils
OPTIONS	-R	Remote display version also available
	-TRB	Totaliser reset button
	-DC	11-31 VDC powered, instead of AC powered

Wastewater, Tradewaste and Bore Water

The **ManuFlo KMS501W Electromagnetic Wafer Flowmeter**, equipped with the 'S50' display, is specifically designed for tradewaste applications, as well as bore water and irrigation, handling liquids with up to 10% solids. Fully wired, custom-programmed, and ready for immediate use, the KMS501W combines accuracy and durability with minimal maintenance, making it the ideal solution for managing tradewaste flow measurement.



Sydney
WATER



ME995 BATCH CONTROLLER:

- **High-Quality Construction:** Built with a PFA (Teflon) liner and Hastelloy C electrodes for enhanced corrosion resistance, featuring a robust cast alloy display enclosure and wafer connection for durability in demanding environments
- **Reliable and Low Maintenance:** The flowmeter is virtually maintenance-free, with no moving parts, and self-verifies its accuracy at $\pm 0.5\%$ of measured value (MV) $+1$ mm/s, ensuring reliable performance for tradewaste monitoring
- **Flexible Power and Display Options:** Powered by 85-253 VAC or 17-31 VDC, it includes an 8-digit totaliser and flowrate display, available with integral or remote display options (via a 2-metre cable)
- **Compliance with Tradewaste Standards:** Optionally fitted with a MIL-Spec sampler and 4-20mA output plugs, the KMS501W is compatible with Sydney Water Tradewaste requirements and other water authority standards

- **User-Friendly Programming:** Easily programmable via four tactile buttons, magnetic wand, or HART to PC, with an IP68-rated flow sensor for reliable operation in wet environments
- **Wide Operational Range:** Suitable for process temperatures from -25 to 120°C , and requires a minimum liquid conductivity of $5\text{ }\mu\text{S/cm}$ ($20\text{ }\mu\text{S/cm}$ for water)

Wastewater, Tradewaste and Bore Water



ORDER CODES		DESCRIPTION
KMS501-015W		15mm Water Connection, PFA SS reinforced liner, Hast-C electrodes. 85-253vac
KMS501-025W		25mm Water Connection, PFA SS reinforced liner, Hast-C electrodes. 85-253vac
KMS501-040W		40mm Water Connection, PFA SS reinforced liner, Hast-C electrodes. 85-253vac
KMS501-050W		50mm Water Connection, PFA SS reinforced liner, Hast-C electrodes. 85-253vac
KMS501-080W		80mm Water Connection, PFA SS reinforced liner, Hast-C electrodes. 85-253vac
KMS501-100W		100mm Water Connection, PFA SS reinforced liner, Hast-C electrodes. 85-253vac
KMS501-150W		150mm Water Connection, PFA SS reinforced liner, Hast-C electrodes. 85-253vac
OPTIONS	-R	Remote wired display/transmitter with 2m cable
	-TW	Sydney Water Tradewaste sampler plugs fitted (2 and 6 pin plugs)
	-DC	17 - 31 VDC powered
	-XC	Extra cable (where n in product code + extra cable length in metres)
	-TW-R	Remote Mil-Spec Sample/mA outputs plug pack, wall mountable
SPARES AND ACCESSORIES	TWSPS	Trade Waste Sample Pulse Splitter
	SJP	Sensor Junction Potted for IP68 applications where sensor is located in pit

Water Studies



The **ManuFlo CT5-S20 (TD8) Positive Displacement Flowmeter** 20mm water meter is designed to measure domestic drinking water precisely. It operates effectively at temperatures up to 30°C continuously and can handle up to 50°C for short periods (up to 2 hours), with a working pressure of up to 1500 kPa. Ideal for domestic drinking water applications, the CT5-S20 provides highly accurate data on water usage and flow rates, making it an essential tool for residential water billing and monitoring. This flowmeter is an adaptation of the Aquadis+/TD8, manufactured to meet Australian and international specifications. It features the highest pulse output rate for a domestic water meter of its size, ensuring precise and reliable water measurement.

KEY FEATURES:

- **High Accuracy and Long Life:** The precision-engineered rotary piston measuring chamber ensures accurate measurements, even at low flow rates
- **Mechanical Totaliser:** Easy-to-read counter displays from 0.02 to 9,999,999 litres
- **Installation Flexibility:** This can be installed in any position without affecting accuracy and requires no onsite calibration
- **Inline Filter and Check Valve:** Prevents blockages and backflows (optional dual check-valves available)

- **High-Resolution Pulse Output:** 72 pulses per litre for precise data collection, suitable for integrating data-loggers and other devices
- **Connection Kit Included:** Supplied with a gasket seat coupling connection kit (optional ball seat available for SydneyWater/NSW)

TECHNICAL SPECIFICATIONS:

- **Measurement Principle:** Volumetric rotary piston
- **Output:** 72 counts/litre reed switch contact closure
- **Standards Compliance:** Designed to meet AS3565.1-1998
- **Accuracy:** ±2% (Qt to Qs)
- **Repeatability:** ±0.1%

Water Studies



CT5 domestic water approved flowmeters – Conventional Type Models

ORDER CODES	PRODUCT	LITRES/MIN
CT5-S20-M-15	Manifold flowmeter 121ppl. SCV e.g. for NZ-Water etc (with 15mm flow range) G 1½" thread	0.1 - 50
CT5-S20-M-20	Manifold flowmeter 72ppl. DCV e.g. for QLD-Water and others (20mm flow range) G 1½" thread	0.2 - 83
MCT20-NZ	Manifold coupling cast. G 1 ½"-BSP-F with 20mm ¾" BSP (male) ends – (by DataCol / Accuflo)	
MCT20	Manifold coupling cast. G 1 ½"-BSP-F with 20mm ¾" BSP (male) ends – (by StrongCast)	
MCT20-NZ	Manifold coupling cast. G 1 ½"-BSP-F with 20mm ¾" BSP (male) ends – (by DataCol / Accuflo)	
OPTIONS	-BS20/25	20/25mm BSP female Ball Seat connection for NSW (in lieu of Gasket Seat connections)
	-DCV	Dual Check valve
	CT5-S	Client supplies mechanical flowmeter to ManuFlo, ManuFlo converts flowmeters with high pulse rate technology option

ME-USB-5+ Data Logger

The **ManuFlo ME-USB-5+** is a versatile Counter, Event, and State USB Data Logger designed to measure and log event counts accurately. The ME-USB-5+ is an ideal solution for applications requiring precise event and state logging, particularly in critical data accuracy and durability environments. For more information or to place an order, please consult ManuFlo.



KEY FEATURES:

- **Event Count Input:** Single event count input is not scalable but suitable for accurate data logging

- **Internal Battery:** Includes a 1-year lithium battery (3.6V 1/2AA) for reliable operation

- **Flexible Input Options:** Supports volt-free, normally open contacts or input voltages up to 24 VDC

- **Windows Compatibility:** Comes with Windows control software and measurement leads for easy data management

- **Large Storage Capacity:** Stores up to 1,000,000 timed events/intervals in counter mode

- **Low Pulse Resolution Compatibility:** It is suitable for low-pulse resolution flowmeters, such as 1 pulse per litre or other configurations (e.g. 5, 10, 100, 1000 litres)

- **Detailed Event Logging:** The 4Hz setting provides full-time/date details per event. It displays a one-line summary for high-speed events (100 events/sec)

- **Weatherproof Connections:** Features 2 wire lead connectors with a weatherproof boot cover for durable outdoor use

Data Logger

ManuFlo flowmeters are built for seamless integration with any dataloggers on the market, including our advanced **ManuFlo Data Loggers**. With features like GSM, SPRS, SMS, and email data collection, as well as a Web Portal for remote access, our dataloggers deliver reliable, precise monitoring and application performance. Whether you're looking to connect with your existing systems or need advice on the best setup, ManuFlo has the expertise and equipment to support you.



COMPATIBLE SYSTEMS INCLUDE:

- **Aegis: DataCell-D/rtx** Versatile and robust data logging for industrial applications
- **Halytech: Spider (NSW-Water meter watch approved)** A smart monitoring solution for water meters, certified for compliance in New South Wales
- **Outpost: WASP2 Water Studies** Advanced water analysis tools for environmental and industrial applications.
- **SUMS: Smartpipe** Innovative solutions for real-time pipeline monitoring and data management

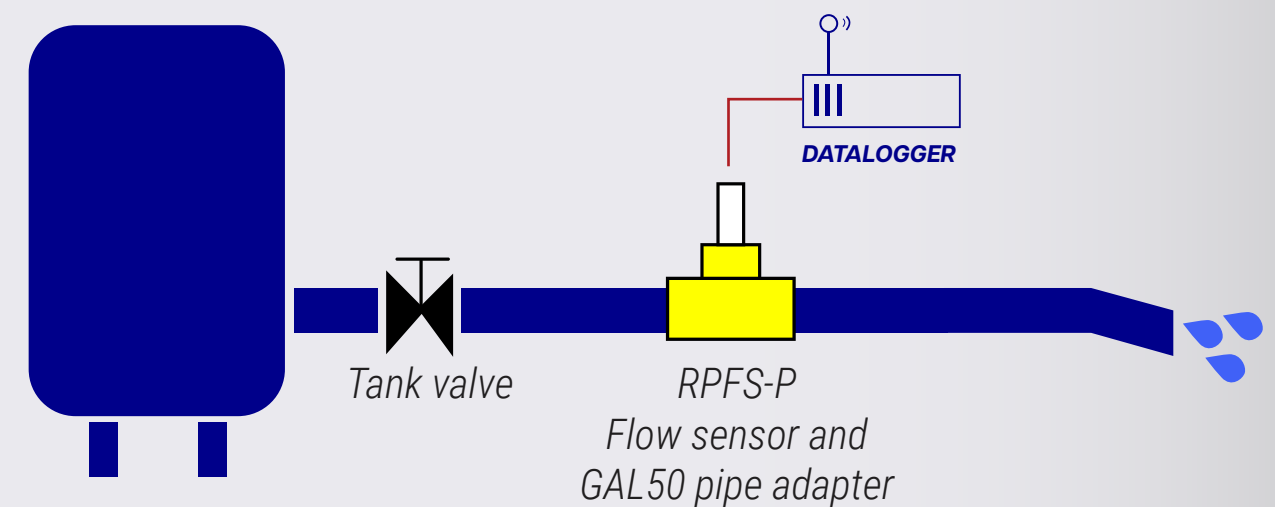
- **E-State Automation: Remote Telemetry Solutions** Cutting-edge remote monitoring for a wide range of industrial processes

- **CORETEX: Concrete Truck Fleet Solutions** Industry-leading technology for managing concrete truck operations with precision and efficiency

- **Kallipr: capture, measure, and analyse data in extreme environments** A universal IoT-based data logger system designed for remote monitoring and measurement over cellular networks

Flowmeter and Datalogger Solutions

EXAMPLES OF APPLICATION



Customisable Solutions

ManuFlo goes beyond offering standard products. We can customise and install any combination of flowmeters and dataloggers to create a complete solution tailored to your specific needs. Whether you require precise dosing in the concrete industry, environmental monitoring, or remote telemetry, we have the expertise to deliver.

Our end-to-end service ensures that your system is installed, calibrated, and optimised for peak performance, providing you with the confidence to focus on what matters most—your business operations.

Contact us today to explore how our flowmeter and datalogger solutions can elevate your operational efficiency and data accuracy.

Instrumentation - Flow, Pressure and Level Sensors



**FLOW
INSTRUMENTATION** p.47



FLOW SWITCHES p.63



FLOWMETERS p.67



**PRESSURE
SENSORS** p.133



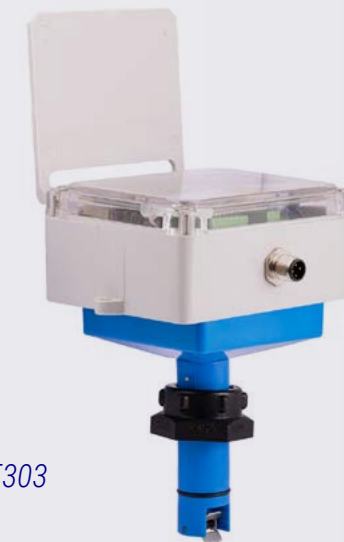
LEVEL SENSORS p.143

Instrumentations: Flow, Pressure Sensors, Level Sensors

ManuFlo offers a range of instrumentation systems, including flow meters, pressure sensors, temperature sensors, and level sensors.



KVA20



FRT303



CT5

Flow Instrumentation Components

- Batch Controllers
- Plc/Computer Interface Batch Products
- Flowmeter Interface Pulse Scaler Cards
- Flow Rate Displays and Totalisers

Flow Instrumentation Components



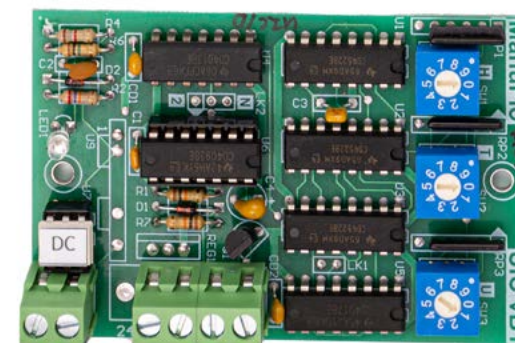
Batch Controllers

PAGE 48



Plc/Computer Interface Batch Products

PAGE 52



Flowmeter Interface Pulse Scaler Cards

PAGE 54



Flowrate Displays and Totalisers

PAGE 56

ME995 Series

Preset Batch Controllers

The **ManuFlo ME995 Series** preset batch controllers are designed for precise liquid batch control applications, offering a range of configuration options and user-friendly operation.

KEY FEATURES:

• **Display:**

- LED displays for clear visibility
- 4 LED diagnostic indicators for status monitoring

• **Functionality:**

- Preact/freefall function for accurate batching
- Preset maximum limit for safety
- Missing pulse detection to ensure reliability
- User-friendly operation with rotary selector switches and toggle switches

• **Interface:**

- Optional PLC/computer interface for integration
- Pulse/setpoint/alarm outputs for versatile applications
- Easily interfaced with PLCs for enhanced safety and backup batch facility

• **Configuration:**

- Over 10,000 units in operation, proving reliability and versatility
- Many configuration options to suit various applications



• **Construction:**

- Standard panel mount form
- 240 VAC input supply, 240 VAC output drive, and 12 VDC to flowmeter
- Available in metal or ABS enclosures, rated to IP65 for protection

• **Operation:**

- Batch quantities are selected using rotary selector switches
- The batch operator can cross-reference the up-count LED display counter with the originally selected batch quantity shown on the selector dials
- The final batched quantity is displayed on the LED batch screen
- Command operations are performed by toggle switches, with four LEDs indicating operational status conditions

• **Maintenance:**

- All wiring and output options are via plug sets, making replacement or maintenance simple without needing to rewire the installation

ME995 Series

Preset Batch Controllers



ORDER CODES	PRODUCT	INPUT PPL
ME995-1	MILLILITRES 5 digits 90000 maximum. 240 vac I/O	1000
ME995-1A	MILLILITRES 4 digits 9000 maximum	1000
ME995-2	VARIABLE DOSERATE (mls x 10 / m3), CUBIC METRES (Displays mls)	1000
ME995-2C	VARIABLE DOSERATE (mls x 10 / m3), CUBIC METRES (Displays m3)	1000
ME995-2CH	HIGH DOSERATE (mls x 10 / m3), CUBIC METRES (Displays m3)	1000
ME995-2H	HIGH DOSERATE (mls x 10 / m3), CUBIC METRES (Displays mls)	1000
ME995-3	VARIABLE DOSERATE (mls x 10 / 100kg), KG OF CEMENT (Displays mls)	1000
ME995-3H	HIGH DOSERATE (mls x 10 / 100kg), KG OF CEMENT (Displays mls)	1000
ME995-3K	VARIABLE DOSERATE (mls x 10 / 100kg), KG OF CEMENT (Displays kgs)	1000
ME995-3KH	HIGH DOSERATE (mls x 10 / 100kg), KG OF CEMENT (Displays kgs)	1000
ME995-4	LITRES 99.990 maximum	1000
ME995-6	LITRES 99.9 maximum, with decimal point	1000
ME995-7x1	LITRES 9999 maximum, with K-factor calibration (x1 pulse input multiplier)	1-999
ME995-7x17	LITRES 9999 maximum, with K-factor calibration (x17 pulse input multiplier)	1-999
ME995-7D	LITRES 999.9 maximum, with decimal point and K-factor calibration x1	1-999
ME995-7D-S	LITRES 99.9 maximum, with decimal point and K-factor calibration x1	1-999
ME995-7H	LITRES 99990 maximum, min.batch selection 10 litres	1-999

ME3000

Batch Controller

The **ManuFlo Me3000 Microprocessor-Based Preset Batch Controller** is designed for precise batch control applications using pulse output flowmeters of any size. This versatile controller offers a range of features and programmable functions to meet various industrial needs.

KEY FEATURES:

• Display:

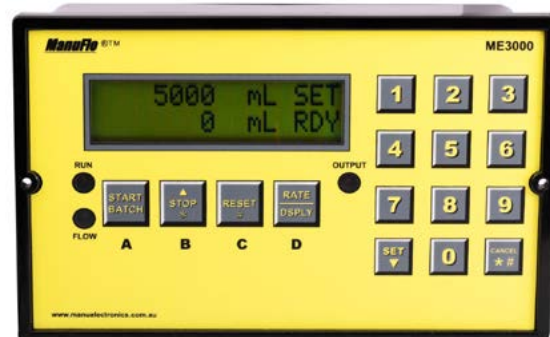
- 2-line x 16-character display for quantity set and dispensed
- Displays units in millilitres, litres, kilolitres, grams, kilograms, and US gallons
- 3 indicator LEDs for operational status
- Alarm messages shown on the LCD display

• Functionality:

- Keypad input for easy batch setting and programming
- Functions include preact and preset maximum limit
- Safety features such as missing pulse detection
- Optional RS232 printer interface for batch tickets and downloading the internal event log

• Interface:

- Optional PLC/computer control interface for enhanced integration
- Optional -FP front interface for easy access to download the internal event log



• Outputs:

- Single channel, compatible with any size flowmeter
- RUN LED indicates voltage contact output drive when the pump or solenoid is activated
- FLOW LED monitors incoming pulses from the flowmeter
- OUTPUT LED indicates scaled pulses output to a PLC/computer
- Internal audible alarm for batch cycle completion and error notification

• Compatibility

- Uses the same instrument housing and 10-pin Weidmuller receptacle plug as other ManuFlo batch controller models, allowing for instant changeover or upgrade without rewiring
- Easily interfaces with PLCs for added safety and backup batch facility

• Power Supply:

- Operates from standard 220-240 VAC (optional 110 VAC or 12-24 VDC)
- Contact output drive via a relay (optional open contact)

• Construction:

- Standard panel mount form
- Optional metal box or IP65 ABS wall mount enclosure



ME3000

Batch Controller



ORDER CODES		SPECIFICATIONS
SYSTEMS	ME3000	<ul style="list-style-type: none"> • 6 digit LCD Microprocessor Batch Controller. Panel mount type • Front keypad. IP64 • Displays batch in ml / Litres / kL / grams / KG / US Gallons • Flowrate display • Fully programmable e.g. input pulses/Litre (K-factor). Batching safety features • 240 vac I/O. With logic, pulse, and current output options • Ticket print quantity is programmable e.g. can print double tickets
	TMP-DC	<ul style="list-style-type: none"> • Batch Printer System • Comprises ME3000-SC and TTP-A5 printer, wired and mounted in a hinged lockable powder-coated steel box • With 12-24 VDC power supply
OPTIONS	TMP-AC	Auto Batch Printer System comprises ME3000-SC and TTP-A5 printer, wired and mounted in a hinged lockable powder-coated steel box. with 240 vac power supply.
	-SC	RS232 male serial connector at the back of Controller, for ticket printer output (date/time/batch)
	-FP	RS232 port on the front of Controller (includes RS232 to USB converter cable)
	XC4834	DB9 Serial to USB converter



ME2008

Microprocessor Interface Controller Safety Card

The **ManuFlo ME2008 Microprocessor Interface Controller Safety Card** was designed to meet the needs of construction chemical product suppliers and users. Its software includes safety features to detect and warn against most flow metering faults during and after the batch cycle, making it one of the safest systems available. All message status functions are displayed, and settings are easily retrieved, ensuring user-friendly operation. Ideal for managing admixture liquids in the concrete production industry, it supports a wide range of signal output flowmeters with PLC/ computer auto batch systems.

KEY FEATURES:

- Channel Support:**
 - Supports up to 8 channels using up to 4 Dual-Channel Modules (DCMs) mounted on the motherboard
 - Simultaneous batching of all 8 channels without sequencing requirements
- Programming and Display:**
 - Fully programmable parameters via a plug-in handheld keypad
 - Dual display counters for each channel, providing instantaneous flowrate display and accumulated batch totals (grand totals) for inventory records
 - All display readouts in litres to three decimal places



- Functionality:**
 - Pulse comparator for optional dual flowmeter system, with software (V1.9.1) to disable the comparator function if needed
 - Input pulse scalable for use with most types of flowmeters
 - Initial start and pulse fail safety features
 - Low and high flow range settings to safeguard against exceeding flowmeter operating ranges
 - Maximum pulse output frequency alarm for PLC input safety
 - Maximum batch limit safety and output pulse division to PLC/ computer scalable
 - Manual batch facility with disable option
- Safety and Alarms:**
 - Master audible alarm function for various conditions, including leaky check valves (back flow)
 - Alarm condition for maximum pulse output frequency and other critical faults
- Construction:**
 - Designed for new water channels up to 9000 litres max (requires WATER V1.9 firmware)

ME2008

Microprocessor Interface Controller Safety Card



ITEM	ORDER CODES				SPECIFICATIONS
Model	ME2008				Microprocessor Interface Batch Safety Unit (inbuilt rate and inventory totals) <ul style="list-style-type: none"> Accepts most flowmeter types. Interfaces with computer/PLC systems Dot-matrix dual LCD counters, 4x plug-in dual-channel modules Variable pulse divisions, AC triac or DC opto output pulse switching with pulse limiter Wall mount enclosure with a handheld plug-in keypad programming module Manual batching facility on front panel
Number of Channels		2-CV			2 channels (2 admixtures) on motherboard
		4			4 channels (4 admixtures) on motherboard
		6			6 channels (6 admixtures) on motherboard
		8			8 channels (8 admixtures) on motherboard
Supply voltage - Motherboard			-1A		240 vac power supply (with new high pwr Torriod Transformer and pwr regulator)
			-1B		110 vac power supply (with new high pwr Torriod Transformer and pwr regulator)
			-1C		24 vac power supply (with new high pwr Torriod Transformer and pwr regulator)
			-1D		24 VDC power supply (with new high pwr regulator)
Start input/ output drives and master reset (modules)			-2A		240 vac start/reset relay logic fitted
			-2B		110 vac start/reset relay logic fitted
			-2C		24 vac start/reset relay logic fitted
			-2D		24 VDC start/reset relay logic fitted
Pulse Output				-3A	240 vac Moc3041 triac pulse output switching (only with '1A' 240 vac power supply option)
				-3B	Same AC voltage as for the start/reset option (i.e. 24 vac or 110 vac)
				-3C	5-30 VDC open collector pulse output. Suits Jonel/ Compubatch/Autocon computers

Universal Interface Card (UIC)

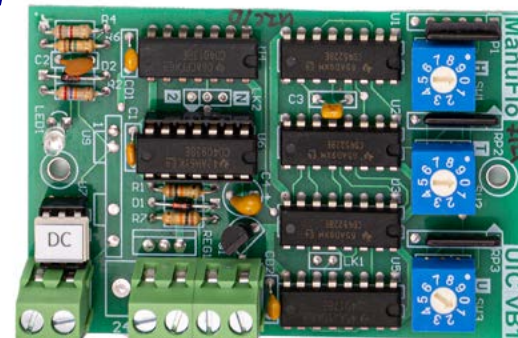
The **ManuFlo UIC** is a versatile and reliable solution for interfacing pulse flowmeter outputs with PLC/computer systems, ensuring accurate and safe data transmission in various industrial settings. It is designed to provide signal scaling and an isolation interface for pulse flowmeter outputs, re-transmitting signals to PLC/computer inputs. It ensures accurate and reliable data transmission in various industrial applications.

MODEL VARIANTS:

- 1. UIC/A2:** 24-250 VAC pulse switching via a heavy-duty triac opto. (+5-12VDC supply)
- 2. UIC/D:** 5-30 VDC NPN/PNP (sink/source) pulse switching via a 4N33 opto. (+5-12VDC supply)

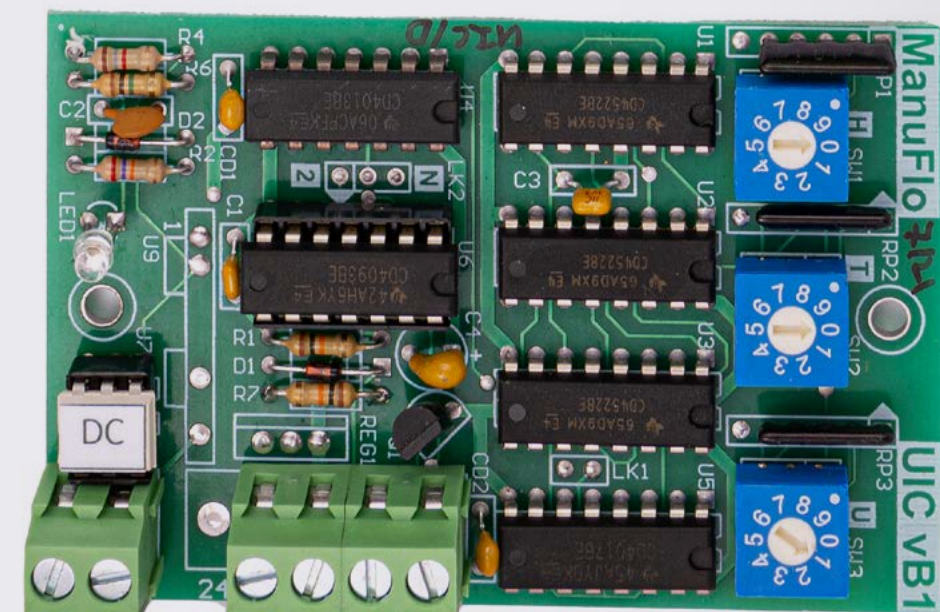
KEY FEATURES:

- Supply Voltage:** 5 to 12 VDC, must be regulated DC voltage (optional 24 VDC input with voltage regulator)
- Input Compatibility:** Accepts digital OC, NPN transistor, or contact closure input flowmeter pulses
- Pulse Input Frequency:** Maximum 2 kHz (e.g. with MES20)



- AC Switching:**
 - UIC/A2:** 24-250 VAC switching up to 1 Amp via CRYDOM-AO241 solid-state opto triac, with surge protection to 2500 V RMS. Drives yellow Opto22 input modules or equivalent solid-state inputs
 - Note:** Due to AC triac opto isolator characteristics, frequency output to computer inputs should not exceed 15 Hz
- DC Switching:**
 - UIC/D:** Open collector switching pulse data: 5-30 VDC via 4N33 Motorola opto, open collector (sink or source), with surge protection to 7500 V RMS. Drives white Opto22 or other solid-state inputs
- Pulse Data Conditioning:** Pulses from flowmeters can be needle-shaped; the UIC's Schmitt trigger input filters industrial noise. UIC output pulses are conditioned to a near 50% duty cycle

Universal Interface Card (UIC)



ORDER CODES	PRODUCT
UIC/A2	UNIVERSAL INTERFACE CARD with pulse scaling (flowmeter to PLC input) 24-240 vac triac switching pulse output, and 5-12 VDC sink pulse output Heavy duty. High isolation. x10 input scaling. 5-12 VDC powered
UIC/D	UNIVERSAL INTERFACE CARD with pulse scaling (flowmeter to PLC input) •5-30 VDC open collector 4N33 opto-isolated pulse output and 5-12 VDC sink output 5-12 VDC powered
-24DC	Option: 24 VDC powered (instead of 5-12 VDC) with 12VDC supply to flowmeter

FRT303

Flowrate Totaliser

The **Manuflo FRT303 Flowrate Totaliser** is designed for versatile operation with a wide range of pulse/signal output or coil output flowmeters, providing accurate flowrate readings and total displays.

KEY FEATURES:

- **Display Functions:** Shows flowrate, resettable total, and non-resettable grand total
- **Easy to Read:** Large digits on the LCD, readable from a distance
- **User-Friendly:** Simple reset total button on the front panel
- **Power Options:** Internal lithium battery (up to 10 years life), or external 240 VAC / 5-25 VDC models
- **Outputs:** High and low set points, pulse, and 4-20mA output options
- **Durable Enclosure:** IP65 wall-mountable enclosure with flip-up lid to protect the LCD from weather
- **Programmable:** Fully programmable functionality with internal keypads and menu display



- **Specifications:**
 - **Pressure:** DN25-80: 1600 kPa
 - **Process temperature:** -40°C to 100°C
 - **Measured liquid conductivity:** as low as 0.05 µS/cm or 1 µS/cm for demineralised water

FRT303

Flowrate Totaliser



ORDER CODES		SPECIFICATIONS
FRT303-B		Lcd 6d flowrate, 7d reset total and grand totaliser indicator. Ip65 enclosure. Lithium battery 3.6v 6+yrs
FRT303-B-P		Digital lcd indicator, 6 digit flowrate, 7 digit reset total and grand totaliser, ip65 enclosure with fastening tabs. Lithium battery 3.6 V 6+yrs, includes programmable pulse output option, 5ms fixed pulse width.
FRT303-D		Lcd flowrate, reset total and grand totaliser indicator. Ip65 enclosure. External 5-30vdc powered.
FRT303-D-P		Lcd flowrate, reset total and grand totaliser indicator. Ip65 enclosure. External 5-30vdc powered. Includes pulse output option
FRT303-D-E		Lcd flowrate, reset total and grand totaliser indicator, ip65 wall mount polycarbonate enclosure. External 5-30vdc powered, includes hi/lo setpoints, pulse and 4-20ma isolated output options.
FRT303-A-P		Lcd flowrate, reset total and grand totaliser indicator. Ip65 enclosure. 240vac powered.
FRT303-A-E		Lcd flowrate, reset total and grand totaliser indicator. Ip65 enclosure. 240vac powered. Includes hi/lo setpoints, pulse and 4-20ma isolated output options.
OPTIONS	-LBP	Larger internal lithium jst pluggable radial battery 3.6v-aa (in lieu of pcb mounted allows 10+yrs)
	-RSB	Push button reset switch function (in lieu of capacitive touch type)
	-SSB	Stainless steel outer enclosure. Hinged lid. Lockable. (To house and protect frt303)
SPARE PARTS	FRT-LCD	Lcd only for any frt303 model
	FRT-UCB	Upper circuit board (without lcd) only for any frt303 model
	FRT-LCB	Lower circuit board only for any frt303 model
	FRT-TE	Top enclosure with hinged lid for any frt303 model
	FRT-LE	Lower enclosure for any frt303 model
	FRT-LB	Lithium battery 3.6v 1200mah (6-10 year life) (with axial leads for pcb soldering)

ME5

Series Digital Indicator

The **ManuFlo ME5 Series**, encompassing the ME5-T and ME5-F models, is designed to operate with a wide range of pulse/signal output or coil output flowmeters, providing versatile and accurate flow measurement solutions. Ideal for pulse flowmeters requiring an additional large display and reset of total, suitable for a wide range of field applications, including water, oils, and air measurements.

KEY FEATURES:

- Display:**
 - ME5-T:** 5-digit LCD display of total volume, resettable via the front panel button or optionally via internal reset
 - ME5-F:** 5-digit LCD function display for instantaneous flowrate
- Ease of Use:**
 - Simple reset total button on the front panel for ME5-T, which also activates the unit from dormancy to save battery life
 - Fully programmable functions accessible via internal operator buttons
- Power Options:**
 - Internal lithium battery with up to 10 years lifespan
 - Optional external power: 240 VAC or 5-25 VDC models



- Outputs:**
 - Pulse output option for data loggers/ PLCs
 - High and low set points, 4-20mA outputs for various applications (ME5-F)
- Enclosure:**
 - Compact IP65 polycarbonate enclosure with moulded mounts and flip-up lid to protect the LCD from weather
- Temperature Range:**
 - Maximum ambient temperature of 55°C
- Compatibility:**
 - Accepts flowmeter input pulses from 0.2 to 2000 Hz (ME5-F)
 - Pre-programmed according to customer requirements, including display unit preferences and flowmeter K-factor. Scaling can be recalibrated in situ if necessary

ME5

Series Digital Indicator



ORDER CODES	SPECIFICATIONS
ME5-F-B	LCD 5 digit Flowrate indicator IP65 enclosure Internal battery pwr (for reed and coil flowmeters only)
ME5-F-D	LCD 5 digit Flowrate indicator IP65 enclosure Ext 5-30VDC powered (as above)
ME5-F-A	LCD 5 digit Flowrate indicator IP65 enclosure 240vac powered
ME5-T-B	LCD 5-digit resettable Totaliser (large display, K-factor) indicator with pulse output option IP65 wall mount enclosure Internal 10yr Lithium battery powered
ME5-T-B-P	LCD 5 digit reset Totaliser indicator, with pulse output IP65 enclosure Internal battery (as above)
ME5-T-D-P	LCD 5 digit reset Totaliser indicator, with pulse output IP65 enclosure Ext 5-30VDC pwr
ME5-T-A-P	LCD 5 digit reset Totaliser indicator, with pulse output IP65 enclosure 240vac pwr

ME4-T

Resettable Counter

The **ManuFlo ME4-T Resettable Counter** is custom designed and manufactured in Australia, specifically tailored for applications such as concrete batch plant slump stands for adding water into mobile concrete truck mixers.

KEY FEATURES:

- **Display:**
 - 4-digit large LCD resettable totaliser (20mm high), displaying totals in litres
 - Easy reset via flip-top lid or optionally by external contact closure
 - Optional continuous live LCD display (code -NS "no sleep mode")
- **Compatibility:**
 - Works with pulsing flowmeters like CMM25 and RPFS-L
 - Accepts flowmeter input pulses up to 500 Hz
- **Programming and Calibration:**
 - Pre-wired and programmed by ManuFlo according to customer requirements, including 'K-factor' input
 - Subsequent calibrations can be performed using on-board push buttons or via a free app with NFC-capable smartphones
 - Features a user-friendly smart 1-point recalibration self-calculation function



- **Power:**
 - Operates with an internal 3.6V lithium battery with a lifespan of 10+ years.
 - Battery life is prolonged by a sleep mode when not in use, activated by a magnet when the lid is opened
- **Construction:**
 - Housed in a compact IP65 ASA (acrylonitrile styrene acrylate) enclosure, offering high UV and impact resistance
 - Suitable for harsh weather conditions, with fastening lugs for securing to an upright structure or wall mount
 - Dual hinged lid protects the LCD from sunlight, with a magnet secure function
- **Outputs:**
 - Optional pulse output: disabled when lid is closed (code -P) or live even when lid is closed (code -PL)
- **Environment:**
 - Maximum ambient temperature of 55°C

ME4-T

Resettable Counter



ORDER CODES	SPECIFICATIONS
ME4-T	LCD 4 digit Resettable Total indicator. IP65 ABS enclosure. Int.bat.pwr. Flip top magnetic reset. (500hz max.input) (e.g. Ideal for Slumpstands when using CMM25 Magflow for Recycle water -requires ext. 24vdc pwr)
-PC	Pulse output open collector (1/1 ltr.)

Flow Switches



FL5000
PAGE 64



FL6700
PAGE 65

FL5000

Flow Sensor

The **ManuFlo FL5000 Flow Sensor** provides simultaneous measurement of flow and temperature, optimised for water, oils, and air.

KEY FEATURES:

- **Simultaneous Measurement:** Measures flow and temperature at the same time
- **Optimised Applications:** Suitable for water, oils, and air
- **Display:** Red/green display for clear identification of acceptable range
- **Outputs:** Switching output, analogue signal, and IO-Link
- **Adjustable Connection:** Process connection can be rotated for optimal alignment
- **Specifications:**
 - **Signals:** PNP/NPN switching signal, analogue signal, frequency signal, IO-Link (configurable)
 - **Temperature Range:** -20 to 90°C
 - **Pressure Rating:** 100 bar
 - **Connection:** M18 x 1.5 internal thread, connector



FL6700

Flow Monitor

The **ManuFlo FL6700 flow monitor** is designed to meet the stringent requirements of the food and beverage industry, featuring a hygienic design suitable for SIP processes.

KEY FEATURES:

- **Hygienic Design:** Specifically designed for the food and beverage industry
- **SIP Process Compatibility:** Suitable for SIP processes up to 140°C
- **LED Bar Graph:** Indicates switch point and flow
- **Process Adapters:** Extensive range available in accessories
- **Construction:** Wetted parts made of stainless steel
- **Specifications:**
 - **Signals:** PNP switching signal
 - **Temperature Range:** -25 to 95°C; up to 140°C for SIP processes
 - **Pressure Rating:** 30 bar
 - **Connector:** G 1 Aseptoflex Vario
- **Setting Range:**
 - **Liquids:** 3-300 cm/s
 - **Gases:** 200-3000 cm/s



Selecting the correct type of flowmeter

			p.68	p.70	p.76	p.88	p.90	p.92	p.100	p.102	p.112
TYPICAL APPLICATIONS	CONDUCTIVE	PROPERTIES	VARIABLE AREA FLOWMETERS	INSERTION IMPELLER METERS	POSITIVE DISPLACEMENT FLOWMETERS	OVAL GEAR FLOWMETERS	ULTRASONIC FLOWMETER	TURBINE FLOWMETERS	CORIOLIS FLOWMETERS	MINI ELECTROMAGNETIC FLOWMETERS	ELECTROMAGNETIC FLOWMETERS
Town Water	Yes	Clean	✓	✓	✓	✓	✓	✓	✓	✓	✓
Treated Process Water	Yes	Clean	○	✓	✓	○	✓	○	✓	✓	✓
Heavy Recycled Water	Yes	Particulate	✗	✗	✗	✗	✗	✗	○	✗	○
Dam/River/Storm Water	Yes	Fibrous Material	○	✓	✗	✗	✓	○	✓	✓	✓
Bore Water	Yes	Some Solids	✓	✓	✗	✗	✓	✓	✓	✓	✓
RO/De-min/Pure Water	No	Clean	✗	✓	○	✗	✓	✗	✓	✗	✗
Slurries, Grout, Oxides	Yes	Heavy Solids	✗	✗	✗	✗	✗	✗	✓	✗	○
Shotcrete	Yes	Semi Viscous	✗	✗	○	○	✗	✗	✓	✓	○
Petrol, Diesel, Jet Fuel	No	Clean, Light	○	✗	✓	✓	✗	✓	✓	✗	✗
Heavy Oils	No	Very Viscous	✗	✗	✓	✓	✗	✗	✓	✗	✗
Molasses and Water	Yes	Semi Viscous	○	✗	✓	✓	✗	✓	✓	✗	○
Bitumen Emulsion	Yes	Semi Viscous	✗	✗	○	✓	✗	✗	○	✗	✗
Admix (water based)	Yes	Mostly Clean	✗	✗	✓	✓	✓	✗	✓	✓	✓
Admin (hydrocarbon)	No	Often Viscous	✗	✗	✓	○	✗	✗	✓	✗	✗
Beverages (hygienic)	Yes	Some Solids/Pulp	✓	✗	✗	✗	✓	✗	✓	✓	✓

✓

○

✗

SUITABLE

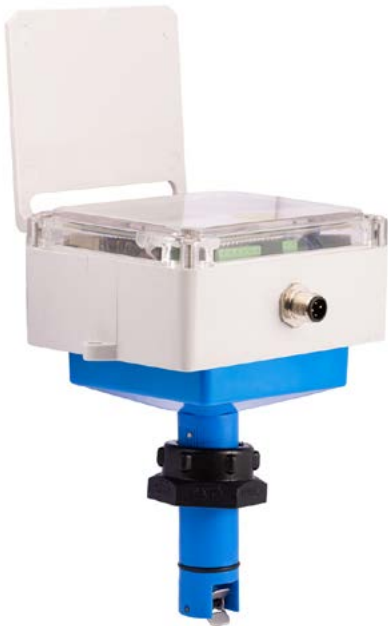
ACCEPTABLE WITH A CAUTION

NOT SUITABLE

Flowmeters



Variable Area Flowmeter
PAGE 68



Insertion Impeller Meter
PAGE 70



Positive Displacement Flowmeter
PAGE 76



Mini Electromagnetic Flowmeter
PAGE 102

KVA20

Variable Area Flowmeter

The **ManuFlo KVA20 Variable Area Flowmeter** is a cost-effective flowmeter designed for basic water applications. It features a plastic tube with a scale and a MIN/MAX switch and provides reliable flow indication at an economical price.

- KEY FEATURES:
- Plastic tube with a scale and a MIN/MAX switch for easy monitoring

• Very cost-effective flow indication

• Available with threads: G1½, G1, G2, or adhesive sleeve

• Operating temperature range: 0...+100°C / +32...+212°F

• Maximum pressure: 10 bar/ 145 psi

• The KVA20 is an excellent choice for basic water flow measurement needs, ensuring accuracy and reliability in a variety of settings



ORDER CODES	SPECIFICATIONS
KVA20-G1/2	G1/2"
KVA20-1	G1"
KVA20-2	G2"

RPFS-Rota Pulse

(Paddle-rotor) For Pipe Sizes: 20 - 500mm

The **ManuFlo RPFS Rota Pulse** is a general-purpose insertion rotor flow sensor designed for various applications with clean liquids (not suitable for fibrous/sticky liquids).

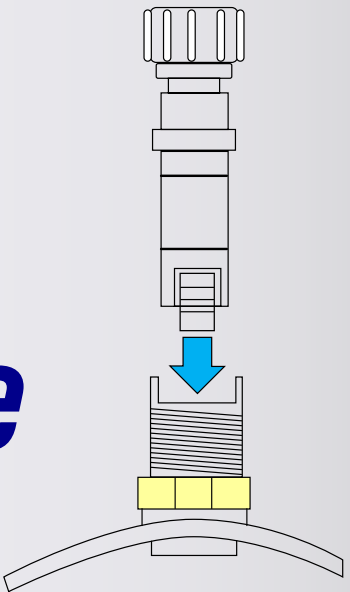
KEY FEATURES:

- **Simple Installation and Maintenance:** Durable Marine-grade stainless steel paddlewheel rotor (without magnets)
- **Reliable Performance:** ± 2.5% accuracy at a velocity range of 0.5 to 8.5 m/sec; ± 1.5% over linear range 0.7 to 7.0 m/sec (starts measuring from 0.3 m/sec); repeatability of ± 1.0%
- **Australian Made:** Since the original design in 1984
- **Pulse Output:** Square wave 50% duty cycle, up to 300Hz
- **Temperature Models:** Available in 50°C or 120°C versions
- **Suitable Liquids:** Water or liquids with a specific gravity ≤ 1.0
- **Adapter Fittings:** A wide range of pipe adapter fittings are available for sizes 20 - 500mm, including BSPB, BSPSS, or BSPB-LS for larger pipe diameters



RPFS - Rota Pulse

(Paddle-rotor)
For Pipe Sizes: 20-500mm



ORDER CODES	SPECIFICATIONS
RPFS-P	Rota Pulse Flow Sensor, NPN pulse output, rated to 1150 kPa and 50°C, M12 Plug-in 5m lead +lock cap, delrin body, IP67, 5-30VDC powered, for pipe sizes 20mm to 110mm
RPFS-H	Rota Pulse Flow Sensor, NPN pulse output, Hi-Temp (2m lead + brass lockcap) Brass body, For hot water up to 120°C. To 2000 kPa (300 psi).IP65. 5-30VDC pwr
RPFS-H-O	Orion Rota Pulse Flow Sensor, NPN pulse, Brass body 2000kPa, 5-30VDC pwr., 60°C
RPFS-L	Rota Pulse Flow Sensor, inductive coil pulse o/p, 120°C (2m lead + lockcap) IP65. To 1034 kPa (150 psi). For use with battery-operated indicators e.g. FRT303-B, ME5-T-B
RPFS-LO	Rota Pulse Flow Sensor, inbuilt op-amp for dataloggers, Delrin body 50°C (M12 -5m lead + lockcap) IP66., 3-24vdc, To 1034 kPa
RPFS-LOD	Rota Pulse Flow Sensor, contact closure pulse, 110°C (M12 -5m lead +lockcap) Ideal for datalogger apps switching 0-100vDC pwr. Delrin, (ideal for battery pwr apps.)
RPFS-LOD-LS	Rota Pulse Flow Sensor, contact closure pulse, 110°C (M12 -5m lead +lockcap) Ideal for datalogger apps switching 0-100vDC pwr. Delrin, (ideal for battery pwr apps) LONG STEM brass body for pipes 120mm> (Self powered zero current draw when connected to input devices)
RPFS-H-LS	Rota Pulse Flow Sensor, LONG STEM brass body (for pipes 110mm). NPN pulse output, (2m lead + lockcap). IP65. 5-30VDC powered. To 50°C. Press. To 2000Kpa
RPFS-L-LS	Rota Pulse Flow Sensor, LONG STEM version for pipe sizes 110mm, inductive coil pulse o/p, robust brass constructed shaft, IP65 with120°C operation and pressure rating to 2000 kPa, 2 metre cable lead, with poly lock cap, for use with ManuFlo battery-operated indicators e.g. FRT303-B, ME5-B
OPTIONS	
M12-10M	Additional cost for M12 plug-in with 10 metre cable length instead of standard 5m cable
M12-15M	Additional cost for M12 plug-in with 15 metre cable length instead of standard 5m cable

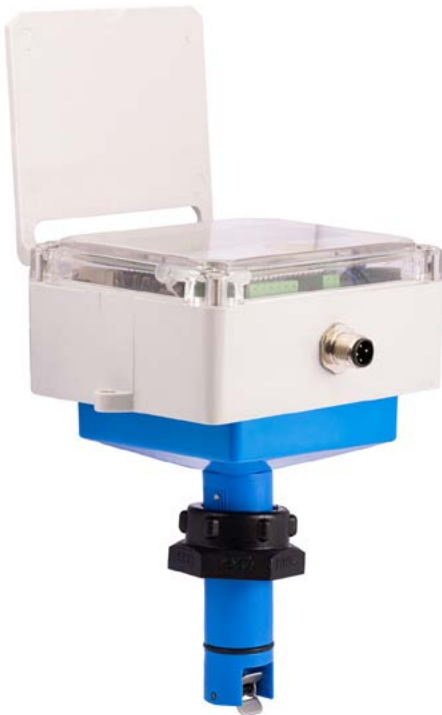
MRT303

For Pipe Sizes: 20 - 315mm

The **ManuFlo MRT303 Insertion Impeller Flowmeter** is ideal for measuring liquids with specific gravity greater than 1.0, featuring a large LCD display for flowrate, reset total, and grand total.

DISPLAY UNIT FEATURES:

- **LCD Display:** Shows flowrate, 6-digit resettable total, and 7-digit grand total
- **UV Protection:** Flip-top lid for LCD protection
- **Easy Reset:** Double touch reset
- **Robust Housing:** IP66 ABS-UV enclosure
- **Power Options:** Internal lithium battery or external DC power
- **Optional Outputs:** Pulse (50 Hz max, 5ms), low/high mA outputs
- **Flexible Mounting:** Inline or 90-degree
- **Certification:** Optional NMI calibration for pipes up to 150mm



FLOWMETER FEATURES:

- **High Accuracy:** ± 2.5% at 0.5 to 8.5 m/sec; ± 1.5% at 0.7 to 7.0 m/sec; repeatability ± 1.0%
- **Slip Insertion Sensor:** Easy installation and maintenance
- **Durable:** Marine-grade stainless steel rotor, pressure up to 1100 kPa
- **Temperature Range:** Fluid up to 110°C, ambient up to 60°C
- **Pipe Sizes:** Fits 20 to 315mm



MRT303

For Pipe Sizes: 20-315mm



ORDER CODES		SPECIFICATIONS
MRT303-B		LCD dual line Flowrate with Resettable + Grand Totalisers - integral Indicator Flowmeter, integrally mounted slip insertion delron multi-pipe-size adaptable paddle-rotor slip insertion flow meter. IP66 ABS-housing. (3.6v 1/2AA lithium powered 6+yrs) For pipe sizes 20 to 110mm
OPTIONS	LS	Long stem brass sensor probe upgrade for larger pipe size diameters >125mm
	P	Pulse output 1/1 ltr via M12 Ip67 panel socket plug-set 5 metre lead
	LBP	Larger internal lithium JST pluggable radial battery 3.6v-AA (in lieu of PCB mounted -allows 10+yrs)
	D	5-25VDC external powered option (includes 3.6v pwr backup, allows greater output options)
	E	Pulse / 4-20mA outputs and High/Low setpoint outputs (with ext. +DC pwr option only)
	RSB	Push Button reset switch function (in lieu of capacitive touch type)

MRTU6 - MRTU4

For Pipe Sizes: 20-500mm

The **ManuFlo MRTU6 and MRTU4 Insertion Impeller Flowmeters** provide accurate measurement and easy installation for various applications.

KEY FEATURES:

- **Display:** 6-digit or 4-digit LCD for total and flowrate
- **Units:** Total in Litres/KiloLitres, flowrate in Lt/Min or Lt/Sec
- **Average:** ± 2.5% at 0.7 - 8.0 m/s; repeatability ± 1.0%
- **Power:** 3.6V Lithium battery (8-10+ years)
- **Temp and Pressure:** Max 70°C, 1100 kPa
- **Installation:** Simple with fittings/adapters

OPTIONS:

- **Pipe Sizes:** 20 to 500mm
- **Output:** Optional pulse via M12 plugset



MRTU4: Ideal in Irrigation and many other general water measurement and monitoring applications

MRTU6 - MRTU4

For Pipe Sizes: 20-500mm



ORDER CODES		SPECIFICATIONS
MRTU6		Slip insertion multi-pipe-size adaptable RPFS-L rotor sensor flowmeter IP65, with integrated 6 digit LCD display Totaliser (resettable in Litres) and also 5 digit flow rate indicator. Internally powered by long life lithium battery. For pipe sizes 20 - 110mm
MRTU4		Slip insertion multi-pipe-size adaptable RPFS-L rotor sensor flowmeter IP65, with integrated 4 LARGE digit LCD display Totaliser (resettable in Litres). Internally powered by long life lithium battery. For pipe sizes 20 - 110mm
MRTU4-F		Slip insertion multi-pipe-size adaptable RPFS-L rotor sensor flowmeter IP65, with integrated 4 LARGE digit LCD displaying Instantaneous Flow Rate in LPM or LPS. Internally powered by long life lithium battery. For pipe sizes 20 - 110mm
OPTIONS	S	Long stem brass sensor probe upgrade for larger pipe size diameters >125mm
	P	Pulse output 1/1 ltr via M12 Ip67 panel socket plug-set 5mtr lead
	PG5	Pulse output via M12, IP67, 316 stainless steel cable lead plug-set and 5 metre lead, 5mS fixed pulse width, programmable volume amounts/pulse
	PG10	Pulse output via M12, IP67 316 stainless steel cable lead plug-set and amp; 10 metre lead, 5mS fixed pulse width, programmable volume amounts/pulse
	PG15	Pulse output via M12, IP67 316 stainless steel cable lead plug-set and amp; 15 metre lead, 5mS fixed pulse width, programmable volume amounts/pulse
	KL	Total in KiloLitres
	NRT	Additional cost for M12 plug-in with 10 metre cable length instead of standard 5m cable
	LPS	Additional cost for M12 plug-in with 15 metre cable length instead of standard 5m cable
	NFC PHONE	ANDROID Phone strong NFC signal with Re-Calibration software

CT5

With a high-resolution pulse output

The **ManuFlo CT5-S20 (TD8) Positive Displacement Flowmeter** 20mm water meter is designed to measure domestic drinking water precisely. It operates effectively at temperatures up to 30°C continuously and can handle up to 50°C for short periods (up to 2 hours), with a working pressure of up to 1500 kPa. Ideal for domestic drinking water applications, the CT5-S20 provides highly accurate data on water usage and flow rates, making it an essential tool for residential water billing and monitoring. This flowmeter is an adaptation of the Aquadis+/TD8, manufactured to meet Australian and international specifications. It features the highest pulse output rate for a domestic water meter of its size, ensuring precise and reliable water measurement.

KEY FEATURES:

- **High Accuracy and Long Life:** The precision-engineered rotary piston measuring chamber ensures accurate measurements, even at low flow rates
- **Mechanical Totaliser:** Easy-to-read counter displays from 0.02 to 9,999,999 litres
- **Installation Flexibility:** This can be installed in any position without affecting accuracy and requires no onsite calibration
- **Inline Filter and Check Valve:** Prevents blockages and backflows (optional dual check-valves available)



- **High-Resolution Pulse Output:** 72 pulses per litre for precise data collection, suitable for integrating data-loggers and other devices
- **Connection Kit Included:** Supplied with a gasket seat coupling connection kit (optional ball seat available for SydneyWater/NSW)

TECHNICAL SPECIFICATIONS:

- **Measurement Principle:** Volumetric rotary piston
- **Output:** 72 counts/litre reed switch contact closure
- **Standards Compliance:** Designed to meet AS3565.1-1998
- **Accuracy:** ±2% (Qt to Qs)
- **Repeatability:** ±0.1%

CT5

With a High-Resolution Pulse Output



CT5 domestic water approved flowmeters – Conventional Type Models

ORDER CODES		SPECIFICATIONS	LITRES/MIN
	CT5-S20-M-15	Manifold flowmeter 121ppl. SCV e.g. for NZ-Water etc (with 15mm flow range). G 1½" thread	0.1 - 50
	CT5-S20-M-20	Manifold flowmeter 72ppl. DCV e.g. for QLD-Water & others (20mm flow range) G 1½" thread	0.2 - 83
	MCT20-NZ	Manifold coupling cast. G 1 ½"-BSP-F with 20mm ¾" BSP (male) ends – (by DataCol / Accuflo)	
	MCT20	Manifold coupling cast. G 1 ½"-BSP-F with 20mm ¾" BSP (male) ends – (by StrongCast)	
	MCT20-NZ	Manifold coupling cast. G 1 ½"-BSP-F with 20mm ¾" BSP (male) ends – (by DataCol / Accuflo)	
OPTIONS	-BS20/25	20/25mm BSP female Ball Seat connection for NSW (in lieu of Gasket Seat connections)	
	-DCV	Dual Check valve	
	CT5-S	Client supplies mechanical flowmeter to ManuFlo, ManuFlo converts flowmeters with high pulse rate technology option	

CT5

With a high-resolution pulse output

The **ManuFlo CT5-S20 (TD8) Positive Displacement Flowmeter** 20mm water meter is designed to measure domestic drinking water precisely. It operates effectively at temperatures up to 30°C continuously and can handle up to 50°C for short periods (up to 2 hours), with a working pressure of up to 1500 kPa. Ideal for domestic drinking water applications, the CT5-S20 provides highly accurate data on water usage and flow rates, making it an essential tool for residential water billing and monitoring. This flowmeter is an adaptation of the Aquadis+/TD8, manufactured to meet Australian and international specifications. It features the highest pulse output rate for a domestic water meter of its size, ensuring precise and reliable water measurement.

KEY FEATURES:

- **High Accuracy and Long Life:** The precision-engineered rotary piston measuring chamber ensures accurate measurements, even at low flow rates

- **Mechanical Totaliser:** Easy-to-read counter displays from 0.02 to 9,999,999 litres

- **Installation Flexibility:** This can be installed in any position without affecting accuracy and requires no onsite calibration

- **Inline Filter and Check Valve:** Prevents blockages and backflows (optional dual check-valves available)



- **High-Resolution Pulse Output:** 72 pulses per litre for precise data collection, suitable for integrating data-loggers and other devices

- **Connection Kit Included:** Supplied with a gasket seat coupling connection kit (optional ball seat available for SydneyWater/NSW)

TECHNICAL SPECIFICATIONS:

- **Measurement Principle:** Volumetric rotary piston
- **Output:** 72 counts/litre reed switch contact closure
- **Standards Compliance:** Designed to meet AS3565.1-1998

- **Accuracy:** ±2% (Qt to Qs)

- **Repeatability:** ±0.1%

CT5-S20

20mm Totaliser Positive Displacement Flowmeter



CT5 domestic water approved flowmeters – Conventional Type Models

ORDER CODES	SPECIFICATIONS	LITRES/MIN
CT5-S20	20mm TD8 Itron mech. totaliser / contact closure switched pulse output (72 ppl) • to 30°C (to 50°C for < 2 hours). Accuracy: ± 2%. To 1500 kPa. With single check valve • Couplings included - Gasket Seat (i.e. for VIC, QLD etc) ¾" BSP(m) [NMI-14/3/3]	0.2 - 83
CT5-S25	25mm TD8 Itron mech. totaliser / contact closure switched pulse output (36ppl) • to 30°C(to 50°C for < 2 hours). Accuracy: ± 2%, Repeatability of rate ± 0.1%. 1500kPa • With single check valve. Couplings included - Gasket Seat 1" BSP(m) [NMI-14/3/26]	0.4 - 116
CT5-S32	32mm TD8 mechanical Totaliser COLD Water meter, single check valve, Flange kit inc. nuts, bolts and gaskets, 1/1/4" BSP	0.6-166
FLM-40	40mm FLOSTAR Single Jet Cold Water Flowmeter, with running non-reset dials, c/w oval flange kit with 1.5" BSP F process connections	1.6-266
OPTION	CBT-K1	Cyble module, open collector contact closure pulse output, spare or can be retro-fitted to above flowmeters, pulse scale depends on meter size refer datasheet

MES-HD

Pulse Output Flowmeters

The **ManuFlo MES-HD Pulse Output Flowmeter** is ideal for admixture batching, the batching and flowmeters offer precision and durability.

KEY FEATURES:

- **Precision:** 1 millilitre per pulse, measures liquids up to specific gravity 1.4
- **Accurate:** ± 1.5% accuracy, ± 0.2% repeatability
- **Durable:** Nutating disc chamber, handles impurities, low wear, waterproof
- **Performance:** Operates up to 83 LPM, no vibration issues
- **Pulse Options:** 1, 10, 20, 50, 100, or 1000 pulses per litre
- **Power:** +4 to 30VDC, 5 to 25mA supply current
- **Max Pressure/Temp:** 1160 kPa, 50°C



MES-HD

Pulse Output Flowmeters



ITEM	ORDER CODES				SPECIFICATIONS
Model	MES				Digital pulse flowmeter - Open Contact Version without pull up resistor for ManuFlo equipment
Size		20			20mm low profile body - threaded 3/4"
		20N			20mm - threaded 3/4"
		25			25mm low profile body - threaded 1"
		32			32mm low profile body - threaded 1 1/4"
		40			40mm low profile body - threaded 1 1/2"
Protection			HD		Heavy Duty
			HD-R		Heavy Duty – Reed switch pulse output - Contact Closure Pulse Output, switches upto 30VDC @ 100mA
OPTIONS				A-M12	Connector, 4 Contacts, Cable Mount, M12 Connector, Socket, Female, IP67
				A-M12-5M	Right Angle Female 5 way M12 to Underminated Sensor Actuator Cable, 5m
				A-M12-10M	Right Angle Female 5 way M12 to Underminated Sensor Actuator Cable, 10m
				-T	TEFZEL - green coated body (for corrosive fluids) - Add suffix to any MED flowmeter order code
				-PR	HEAVY DUTY - 32mm digital pulse output flowmeter, threaded 1 1/4" BSP(m) with pull up resistor for Non-ManuFlo equipment



MES-LCD4/ LCD6

The **ManuFlo MES-LCD4 and LCD6** are widely used for admixtures. These flowmeters are ideal for precision batching applications.

KEY FEATURES:

- **Precision Measurement:** Measures liquids up to specific gravity 1.4 with a nutating disc chamber allowing small impurities to pass without jamming
- **Durable:** Low hydraulic thrust minimises wear; gunmetal body and housing; toughened glass face
- **Power:** Internal lithium battery with a 10+ year life
- **Accurate:** ± 1.5% full-scale flow range; ± 0.2% repeatability
- **Pressure and Temperature:** Max pressure 1160 kPa; max liquid temperature 50°C
- **Connections:** 20, 25, 32 mm threaded BSP (male); 40 mm flanged BSP (female)



MES-LCD4/ LCD6



ITEM	ORDER CODES				SPECIFICATIONS
Model	MES				Flowmeters – Flowrate and/or Resettable Total - widely used for Admixtures
Size		20NE			20mm low profile body - threaded 3/4"
		20			20mm - threaded 3/4"
		25			25mm low profile body - threaded 1"
		32			32mm low profile body - threaded 1 1/4"
		40			40mm low profile body - threaded 1 1/2"
Display			LCD4		4 digit LCD resettable display
			LCD6		6 digit LCD resettable display
OPTIONS				-DP	LCD digital resettable (Total Litres with 1 decimal place or rate LPM 1 dec. pl.)
				-T	TEFZEL -green-coated body (for corrosive fluids) Add suffix to any 20mm and 25mm MES flowmeter order code
				NFC PHONE	ANDROID phone strong NFC signal with re-calibration software
				-NRNS	No reset of total (running accumulative totaliser and permanently on)
				-P0	Pulse output via m12 plug-set. 5m/s/pls/width. 1/1 Ltr. (ABS housing)

MES-LCD4/ LCD6

The **ManuFlo MES-LCD4 and LCD6** are widely used for admixtures. These flowmeters are ideal for precision batching applications.

KEY FEATURES:

- Precision Measurement:** Measures liquids up to specific gravity 1.4 with a nutating disc chamber allowing small impurities to pass without jamming
- Durable:** Low hydraulic thrust minimises wear; gunmetal body and housing; toughened glass face
- Power:** Internal lithium battery with a 10+ year life
- Accurate:** ± 1.5% full-scale flow range; ± 0.2% repeatability
- Pressure and Temperature:** Max pressure 1160 kPa; max liquid temperature 50°C
- Connections:** 20, 25, 32 mm threaded BSP (male); 40 mm flanged BSP (female)



MES Spare Parts



ITEM	ORDER CODES		SPECIFICATIONS
Model	20mm		20mm low profile body - threaded 3/4"
	20mm (N)		20mm - threaded 3/4"
	25mm		25mm low profile body - threaded 1"
	32mm		32mm low profile body - threaded 1 1/4"
	40mm		40mm low profile body - threaded 1 1/2"
Parts		1-DSP-OC	Digital Smart Pulse Pulsehead (round) complete capsule, without pull up resistor for ManuFlo Equipment
		1-DSP	(DSP) with internal pull-up resistor fitted: more suited for other equip.
		1R	Reed Switch Pulsehead (square) complete capsule
		1A	LCD 4 digit reset total Litres 1.dec.pt capsule –Bronze Housing
		1B	LCD Rate/6digit reset Litres 1.dec.point display capsule – Bronze Housing
		1F	LCD Flowrate (Litres/min, to 1 dec.pl.) display capsule –Bronze Housing
		1M	Mechanical running (non-resettable) Total display capsule –Poly. Housing
		B	Lid with magnet (for all other MES models)
		3	Strainer
		5	Measuring chamber (complete with chamber O'ring seal) (ceramic-barium magnet c/w plastic shroud)
		6	Chamber O ring
		7	Base sealer gasket ring –rubber (cup gasket –white for "-N" version)
		9	Stainless 316 base screw
		12	Connection washer (each) - for old body/gasket only
		BC	Chamber and New Body (parts 2A - 7, 8M and 9 above)
		SBU	Barrel Connection Unions - Polyprop - BSP (f) - Comes as a pair
		a	Housing Shroud (plastic)
		-B	Housing Shroud (brass) and lid (brass) - industrial grade
		bL	Lid with magnet for 20mm MES20LCD4 (4 digits, no dp)
		b	Lid with magnet (for all other MES models)
		c	Hinge Pin
		d	Locking Plate
		e	Security Pin
		f	Magnet
		g	Glass Lens

* For spare MES capsule components, the Product Code format is "size-code" e.g. "25mm-g" is a spare glass lens for a 25mm MES flowmeter

PSM

Domestic Water Flowmeter

The **ManuFlo PSM Domestic Water Flowmeter** is designed for the accurate measurement of cold potable water. It offers a durable, tamper-resistant solution, ideal for various domestic applications and suitable for pipe diameters from 15 to 40mm.

KEY FEATURES:

- **Accuracy:** ± 2% accuracy with ± 0.15% repeatability (Start 5%)
- **Pulse Output:** Optional, can be retrofitted
- **Tamper Resistance:** Cannot be disassembled in service; mechanically driven counter is magnetically protected
- **Positive Displacement:** Ensures registration even at the lowest flow rates
- **Maintenance-Free:** No calibration required throughout its lifespan
- **Filter Protection:** Fine filter prevents particles from jamming the piston



Pattern Approved.
NMI. 49-1 AS3565.1
for drinking water

- **Display:** Shows total in KiloLitres and Litres
- **Operating Conditions:** Max temperature 50°C, pressure up to 14000 kPa
- **Couplings and Flanges:** 15-25mm models with Gasket Seat couplings; 32-40mm models with flange kits
- **Certification:** WaterMark approved

PSM

Domestic Water Flowmeter



ORDER CODES	SPECIFICATIONS	CONNECTION	FLOWRANGE (LITRES/MIN) START-MIN-MAX-MAX
PSM15	15mm Flowmeter, With Running (Non-Resetable) Mechanical Totaliser	Bsp (Male) Nut and Tail	0.11 - 0.5 - 40 - 80
PSM20	20mm Flowmeter, With Running (Non-Resetable) Mechanical Totaliser, (5 X 3 Dial)	Ball Seat Nsw Couplings	0.18 - 0.5 - 40 - 80
PSM20A	25mm Flowmeter, With Running (Non-Resetable) Mechanical Totaliser	Gasket Seat Couplings	0.18 - 0.5 - 40 - 80
PSM25	25mm Flowmeter, With Running (Non-Resetable) Mechanical Totaliser	Gasket Seat Couplings	0.23 - 0.7 - 58 - 116
PSM32	32mm Flowmeter, With Running (Non-Resetable) Mechanical Totaliser	Oval Flanged, 2 Bolyt Bsp(F)	0.39 - 1.0 - 100 - 166
PSM40	40mm Flowmeter, With Running (Non-Resetable) Mechanical Totaliser	Oval Flanged, 2 Bolyt Bsp(F)	0.64 - 1.5 - 166 - 250
-TP	T-Probe Reed Switch Pulse Output (As Option, As Spare, Or Can Be Retro-Fitted To Psm Flowmeter). For Psm20a: (4 X 4 Dial) Provides 1 Pulse/ 0.5 Litres. For All Other Psm Flowmeters : Provides 1 Pulse/ 5 Litres		
-BSC	Ball Seat Connection And Couplings (For NSW) in lieu of Gasket Seat Couplings (For 20 or 25mm Models 5x3 Dial Only)		

OGF Series

Oval Gear Flowmeter

The **ManuFlo OGF Meters** are designed to accurately measure fuels, oils, solvents, alcohols, mildly aggressive chemicals, and other clean industrial liquids. With flow rates ranging from 1L/min to 1500L/min and low-pressure drop, these meters are ideal for liquid transfer or dispensing applications, whether pumped or gravity-fed. They comply with weights and measures standards (A/NZ only) and come with various hazardous area certifications. These features make the OGF meters versatile for almost any industrial liquid handling requirement.

KEY FEATURES:

- Diesel fuel
- Petrol (gasoline) with or without ethanol
- Biofuels
- Kerosene
- Glycols/anti-freeze
- Diesel exhaust fluid (def/adblue)
- Lubricating oils and greases
- Edible oils
- Solvents
- Resins and adhesives
- Fertilisers, herbicides, insecticides



OGF Series

Oval Gear Flowmeter

For Chemicals, Fuels, Oils and Solvents



ITEM	ORDER CODES			SPECIFICATIONS
Model	FM-OM			Oval Gear Flowmeter (various body, rotor materials and connections available depending on application contact ManuFlo)
Size		004		4mm (1/8") Oval Gear Flowmeter, 1 - 36 L/hr
		006		6mm (1/4") Oval Gear Flowmeter, 2 - 100 L/hr
		008		8mm (1/8") Oval Gear Flowmeter, 15 - 550 L/hr
		015		15mm (1/2") Oval Gear Flowmeter, 1 - 40 L/min
		025		25mm (1") Oval Gear Flowmeter, 10 - 150 L/min
		040		40mm (1 1/2") Oval Gear Flowmeter, 15 - 250 L/min
		050		50mm (2") Oval Gear Flowmeter, 30 - 450 L/min
		080		80mm (3") Oval Gear Flowmeter, 35 - 750 L/min
		100		100mm (4") Oval Gear Flowmeter, 75 - 1500 L/min
OPTIONS			CONNECTIONS	Available in NPT, BSP, ANSI Flanges and Sanitary Tri-clamp
			R5	RT14 backlit Rate Totaliser with 4-20mA and Pulse outputs, in GRN Housing can be integral or remote (for all sizes)
			R6	RT14 IECEx/ATEX Intrinsically safe Rate Totaliser with 4-20mA and Pulse outputs, in GRN Housing can be integral or remote (for all sizes)
			M3	Mechanical register with reset for sizes 15 - 100mm
			F31	F130 IECEx/ATEX Intrinsically Safe stage 2 Batch Controller

KUF6300P

Portable Ultrasonic Clamp-on Flowmeter



The **ManuFlo Portable Ultrasonic Clamp-On Flowmeter** is designed for temporary flow measurement of (non-)conductive liquids across various industries. It provides flexible, battery-powered flow measurement without process interruption or cutting pipes, making it ideal for comparative measurements or short-term replacement of faulty devices. It includes a measurement option for thermal energy applications.

KEY FEATURES:

- **Flexible Use:** Battery-powered with bi-directional measurement for locations where inline measurement is not feasible
- **Easy Installation:** Zero process impact, no pipe cutting, and real-time measurement or data logging
- **Large Storage Capacity:** Stores up to 1,000,000 timed events/intervals in counter mode
- **Advanced Operation:** T2-channel converter for dual path or dual pipe measurements, user-friendly operation via a mobile app, and data transfer through Bluetooth® or USB
- **Portable:** Delivered in a hard case or portable soft case with organiser trays

KUF6300

Permanent Ultrasonic Clamp-on Flowmeter



The **ManuFlo Ultrasonic Clamp-On Flowmeter** is designed for permanent installation and is ideal for measuring the flow of (non-) conductive liquids where inline measurement is not feasible. It features a stainless steel sensor rail with integrated transducers, available for various pipe sizes up to DN4000 / 160". It includes a wall-mounted or field-mounted signal converter.

KEY FEATURES:

- **Robust Design:** Battery-powered with bi-directional measurement for locations where inline measurement is not feasible
- **Easy Installation:** Stainless steel rail system for accurate sensor mounting on virtually any pipe
- **High Accuracy:** Factory flow calibration and X-mode dual path sensor for optimal reliability
- **Wide Measurement Range:** 0.1 to 20 m/s (200:1)
- **Thermal Energy Calculation:** Integrated feature for enhanced functionality
- **Temperature Versatility:** Extended temperature version for measuring liquids up to +200°C / +392°F
- **Durability:** IP68 / Nema 6P option available
- **Diagnostics:** Namur NE107 diagnostics included

GT Series

Turbine Flow Meters



The **ManuFlo GT Series Turbine Flow Meters** offer a complete line of Precision Turbine Meters, available in various housing materials to suit different applications. These meters are robust and reliable, making them ideal for diverse industrial uses.

HOUSING MATERIAL OPTIONS:

- **Stainless Steel:** Suitable for most chemicals and fuel products
- **Aluminium:** Ideal for petroleum-based products
- **Brass:** Best for water applications
- **PVDF:** Designed for aggressive chemicals

SIZES AND FLOW RATES:

- **Pipe Sizes:** 1/2" - 2" (15mm - 50mm)
- **Flow Rates:** 3.8 L/min - 760 L/min

TYPICAL APPLICATIONS:

- Batching
- Food & Beverage Processing
- Blending
- Fuel Products
- Water Monitoring
- Clean Fluids
- Industrial Fluids
- Plant Process Water
- Chemical Feed Lines
- Ammonium
- Harsh Chemicals (e.g. Sulfuric Acid and Bleach)

GT Series

Turbine Flowmeter



ORDER CODES	SPECIFICATIONS
Aluminium Construction	
FM-GTA05IQ9LMA	1/2" Turbine flowmeter, Aluminium Body, BSP Connections with Reset Total, Running Total (Litres) and Rate (L/minute) Integral Display
FM-GTA07IQ9LMA	3/4" Turbine flowmeter, Aluminium Body, BSP Connections with Reset Total, Running Total (Litres) and Rate (L/minute) Integral Display
FM-GTA010IQ9LMA	1" Turbine flowmeter, Aluminium Body, BSP Connections with Reset Total, Running Total (Litres) and Rate (L/minute) Integral Display
FM-GTA015IQ9LMA	1 1/2" Turbine flowmeter, Aluminium Body, BSP Connections with Reset Total, Running Total (Litres) and Rate (L/minute) Integral Display
FM-GTA020IQ9LMA	2" Turbine flowmeter, Aluminium Body, BSP Connections with Reset Total, Running Total (Litres) and Rate (L/minute) Integral Display
316 Stainless Steel Construction	
FM-GTS05IQ9LMA	1/2" Turbine flowmeter, 316 SST Body, BSP Connections with Reset Total, Running Total (Litres) and Rate (L/minute) Integral Display
FM-GTS07IQ9LMA	3/4" Turbine flowmeter, 316 SST Body, BSP Connections with Reset Total, Running Total (Litres) and Rate (L/minute) Integral Display
FM-GTS010IQ9LMA	1" Turbine flowmeter, 316 SST Body, BSP Connections with Reset Total, Running Total (Litres) and Rate (L/minute) Integral Display
FM-GTS015IQ9LMA	1 1/2" Turbine flowmeter, 316 SST Body, BSP Connections with Reset Total, Running Total (Litres) and Rate (L/minute) Integral Display
FM-GTS020IQ9LMA	2" Turbine flowmeter, 316 SST Body, BSP Connections with Reset Total, Running Total (Litres) and Rate (L/minute) Integral Display

BMH 15 and 20mm GSD8

Single-Jet Totaliser Water Meters



The **ManuFlo BMH 15 and 20mm GSD8 Single-Jet Totaliser Water Meters** are designed for accurate and reliable water measurement using the velocity principle. These meters are ideal for applications requiring compact and lightweight solutions, such as hot water tanks. The BMH meters are perfect for hot water tanks and other installations where compactness and weight are critical. They provide accurate and durable performance, with a waterproof register ensuring long-term reliability and precision.

KEY FEATURES:

- **Single-Jet Impeller Measurement:**
Ensures precise water flow measurement
- **Easy-to-Read Display:** Direct reading on 8 numeric dials, displaying down to 1 litre, with an additional clock dial for 0.1 litre increments
- **Compact and Lightweight Design:** Facilitates easy installation, even in confined spaces
- **High Accuracy:** ±2% accuracy (Qt-Qs)
- **High-Temperature Operation:** Suitable for water temperatures up to 90°C

- **Solids Handling:** Capable of passing small solids without jamming
- **Low Head Losses:** Ideal for gravitational flow applications
- **Optional Pulse Output:** Available for logging, remote displays, and other monitoring needs, featuring a volt-free Reed Switch contact closure pulse output (1 litre per pulse) with a 3-metre 2-wire cable lead
- **Screwed Ends with Coupling Connectors:** Standard configuration for easy installation
- **MID Standards Approval:** Approved up to R160H - R50V, ensuring compliance with industry standards

BMH 15 and 20mm GSD8

Single-Jet Totaliser Water Meters



ORDER CODES	SPECIFICATIONS	
BMH-15	15mm flowmeter, running totaliser	0.5 - 50
BMH-15-R1	15mm flowmeter, running totaliser, Contact switch pulse output (1 pulse / 1 Litre)	0.5 - 50
BMH-20	20mm flowmeter, running totaliser	0.8 - 83
BMH-20-R1	20mm flowmeter, running totaliser, Contact switch pulse output (1 pulse / 1 litre)	0.8 - 83

WPD

Turbine Flowmeters

The **ManuFlo WPD Turbine Water Flowmeters** are designed for accurate measurement of low to high constant flow rates. These flowmeters are ideal for a variety of applications, including gravitational flows, and are pattern approved for billing purposes.

KEY FEATURES:

- **Wide Flow Rate Measurement:** Suitable for low to high constant flow rates
- **Low Head Losses:** Optimised for gravitational flow applications
- **Hermetically Sealed Register:** IP68-rated register and pulse module unit can be rotated 360° for easy reading
- **Standards Compliance:** Exceeds Australian Standard AS 3565.1 Measurement Class 2 requirements
- **Pattern Approval:** NMI-M10 AS4747 full pattern approved for billing in Australia (NSW-DPIE), ensuring ±2% accuracy over the full flow range



- **High Pressure and Temperature Tolerance:** Operates up to 1600 kPa and temperatures up to 50°C

- **Flanged Connections:** Table D flanged as per AS2129 standards

AVAILABILITY:

- **Stock Items:** Usually available ex-stock for immediate delivery
- **Australian Pattern Approved:** Complies with EU-standard flowmeters

WPD

Turbine Flowmeters



ITEM	ORDER CODES			SPECIFICATIONS	FLOWRANGE (L/MIN)		
Model	WPD			Turbine flowmeter with running mechanical register in m3 with ancillary dial counters, TABLE D Flanged connections, 16 bar pressure rating temperature to 50°C, cast Iron body with hermetically sealed IP68 plastic register	min +/-5%	min +/-2%	max +/-2%
		40		Size 40 mm - 1 1/2"	4	7	666
Size		50		Size 50 mm - 2"	5	12	833
		65		Size 65 mm - 2 1/2"	7	13	1167
		80		Size 80 mm - 3"	8	15	2000
		100		Size 100 mm - 4"	13	30	3833
		150		Size 150 mm - 6"	50	67	7500
		200		Size 200 mm - 8"	67	100	13333
		250		Size 250 mm - 10"	100	183	20833
		300		Size 300 - 12"	200	250	23300
OPTIONS			-RD	Contact closure pulse output. 1 pulse per 10/100/1000 Litres depending on meter size, ideal for battery powered devices, sizes 40-100mm 10 or 1000 litres/pulse, sizes 150-300mm 100 or 1000 litres/pulse			
			ME5-T-B	LCD 5-digit resettable Totaliser (large display, K-factor) indicator, with pulse output option. IP65 wall mount enclosure. Internal 10yr Lithium battery powered			
			-BM	Bracket Mount for integral mounting ME5TB or FRT303 to flowmeter			

MEH - MEHR

Multi-Jet and Turbine Flowmeters

The **ManuFlo MEHR Multi-Jet and Turbine Cold Water Mechanical Totaliser Flowmeters** are designed for irrigation and various process applications, offering reliable performance and durability.

KEY FEATURES:

- **Versatile Applications:** Ideal for irrigation, process applications, and gravitational low flows, such as cooling towers
- **Impurity Handling:** Capable of passing small impurities without blockage
- **Durable Construction:** Available in 15-50mm sizes with epoxy-coated gunmetal bodies and 80-300mm sizes with epoxy-coated cast iron bodies
- **Mechanical Totaliser:** Features a running (non-resettable) mechanical totaliser

CERTIFICATIONS:

- **MD Certified**
- **WRAS Approved**
- **ASCS Approved**



Optionally on request: For "B-Meters"
European Sanitary Approvals available for size 15-50mm



ADVANCED FEATURES:

- **Hermetically Sealed Register:** Ensures protection and reliability
- **Optional Pulse Output:** Contact switch pulse output versions available for data logging and remote monitoring
- **Compatibility:** Can connect pulse output models to ManuFlo Indicators for a resettable total display
- **High Performance:** Operates up to 35°C and 1000 kPa (PN10)
- **Accuracy:** Maintains ±2% accuracy (Qtransitional - Qmax)

MEH - MEHR

Multi-Jet and Turbine Flowmeters



ITEM	ORDER CODES		SPECIFICATIONS	FLOWRANGE (L/MIN)		
Model	MEH		Multi-jet flowmeter, running mechanical Totaliser		min +/- 2%	max +/-2%
Size		15	Size 15 mm - BSP (male) couplings	0.5	2	50
		20	Size 20 mm - BSP (male) couplings	0.8	4	83
		25	Size 25 mm - BSP (male) couplings	1.2	6	115
		32	Size 32 mm - BSP (male) couplings	2.0	10	200
		40	Size 40 mm - BSP (male) couplings	3.3	17	330
		50	Size 50 mm - BSP (male) couplings	7.5	25	500
		50-F	Size 50 mm - Table D flanged	15	35	800
		80	Size 50 mm - Table E flanged	27	133	2000
		100	Size 50 mm - Table E flanged	38	200	3333
		150	Size 150 mm - Table E flanged	75	500	5000
		200	Size 200 mm - Table E flanged	125	833	8333
OPTIONS		250	Size 250 mm - Table E flanged	200	1333	13333
		300	Size 300 mm - Table E flanged	300	2000	25000
		RS	Reed Switch pulse module, for all MEH sizes (can be retrofitted to flowmeters)			

KCM1400C

Coriolis Mass Flowmeter

Designed for universal applications and process control, the **ManuFlo KCM1400C Coriolis Mass Flowmeters** accurately measures mass, density, and volume flow of gases and liquids, even in complex flow conditions. Certified for hygienic use.

KEY FEATURES:

- Versatile Connections:** Flange sizes DN15–100 (½"–4"), max. PN100 / ASME Class 600, with hygienic fittings
- Advanced Communication:** 3 x 4–20 mA, HART®7, FF, Profibus-PA/DP, Modbus, PROFINET, EtherNet/IP™, Bluetooth®



ITEM	ORDER CODES		SPECIFICATIONS
Model	KCM1400C		
Connection		Clamp	1" Tri-clamp
		ASME	1" ASME 150lb

KCM6400C

High-Performance Coriolis Mass Flowmeter

The **ManuFlo Kcm6400c High-Performance Coriolis Mass Flowmeter** is ideal for the process industry, offering superior performance and high accuracy across various applications, from petrochemical to food and beverage industries, as well as custody transfer in oil and gas.

KEY FEATURES:

- Versatile Applications:** FSuitable for cryogenic media (down to -200°C / -328°F), high temperatures (up to 400°C / 752°F), and high pressures (up to 200 barg / 2900 psig)
- Advanced Design:** Twin bent tube design with Entrained Gas Management (EGMTM) for operation with air or gas entrainments

ITEM	ORDER CODES		SPECIFICATIONS
Model	KCM6400C		
Connection		Clamp	1" Tri-clamp
		ASME	1" ASME 150lb



- Wireless Access:** Secure wireless access via Bluetooth® and remote HART® for commissioning, verification, diagnostics, and monitoring
- Certifications:** SIL 2/3 certified up to DN200 / 8", high accuracy (optional ±0.05% of MV), OIMLaccuracy class of 0.3 for custody transfer

CMM Compact

Mini Electromagnetic Flowmeter

The **ManuFlo Compact Mini-Mag Flowmeters** are ideal for measuring chemical admixtures and slumpstand water. Available in 15mm, 20mm, and 25mm sizes, they offer robust performance and high accuracy.

KEY FEATURES:

- Sizes:** 15mm, 20mm, 25mm

- Construction:** Industrial-grade S/S-316 alloy, lightweight design

- Power Supply:** +24 VDC, with M12 5-pin 3m cable included

- Accuracy:** ±1.5%, 0.3% repeatability, measures from 50 µS/cm



- Pressure and Temperature:** Up to 1600 kPa, -20°C to 90°C

- Sensor:** Peek lined, SS316 electrodes, BSP(m) threaded ends

- Viscosity/Gravity Independence:** Accuracy unaffected by varying viscosities or specific gravities

- Pulse Output:** High-resolution NPN pulse, full pipe flow measurement, Virtual Empty Pipe Detection

CMM Compact

Mini Electromagnetic Flowmeter



ITEM	ORDER CODES			SPECIFICATIONS
Model	CMM			CMM Compact Mini-Mag Industrial Grade Flowmeters (sizes 15, 20 & 25 mm) - Ideal for chemical admixtures / slumpstand water
Size		15		15mm MiniMag (7mm ID bore), ½" - BSP (M) connections in 316 stainless steel, 24VDC powered, with pulse output, includes 3 metre moulded cable
		20		20mm MiniMag (10mm ID bore), ¾" - BSP (M) connections in 316 stainless steel, 24VDC powered, with pulse output, includes 3 metre moulded cable
		25		25mm MiniMag (20mm ID bore), 1" - BSP (M) connections in 316 stainless steel, 24VDC powered, with pulse output, includes 3 metre moulded cable
OPTIONS			CV12-24	12 VDC to 24 VDC power stepup converter . 2 Amp. Ideal for flowmeters
			SBU15	Connectors for MES, MM, METP, CMM and AMM Series Flowmeters 15mm Barrel Unions (Pair, QTY 2). BSP female ends. Polypropylene
			SBU20	Connectors for MES, MM, METP, CMM and AMM Series Flowmeters 20mm Barrel Unions (Pair, QTY 2). BSP female ends. Polypropylene
			SBU25	Connectors for MES, MM, METP, CMM and AMM Series Flowmeters 25mm Barrel Unions (Pair, QTY 2). BSP female ends. Polypropylene
			SBU32	Connectors for MES, MM, METP, CMM and AMM Series Flowmeters 32mm Barrel Unions (Pair, QTY 2). BSP female ends. Polypropylene
			SBU40	Connectors for MES, MM, METP, CMM and AMM Series Flowmeters 40mm Barrel Unions (Pair, QTY 2). BSP female ends. Polypropylene
			SBU50	Connectors for MES, MM, METP, CMM and AMM Series Flowmeters 50mm Barrel Unions (Pair, QTY 2). BSP female ends. Polypropylene

MME

Mini Electromagnetic Flowmeter With TFT Display

The **ManuFlo MME Mini Mag Flowmeters**, available in 15mm, 20mm, and 25mm sizes, are designed for breweries and chemical applications, offering high accuracy and versatility. Ideal for precise measurement and control in brewery and chemical processes.

KEY FEATURES:

- **Sizes:** 15mm, 20mm, 25mm

- **Power Supply:** +19-30VDC

- **TFT Display:** Illuminated display shows resettable total (litres), flowrate (LPM), and temperature

- **Measurement Range:** ±0.8% accuracy, 0.2% repeatability, for conductivity >20 µS/cm

- **Outputs:** Programmable pulse NPN/PNP (1 to 1000ppl) and mA outputs via M12 plug/cable set

- **Construction:** Robust SS316 housing and electrodes, Peek lined sensor, pressure rated to 16 bar



- **Connections:** ISO-G1 BSP(m) parallel threaded ends with optional coupling connectors or Sanitary SIP fittings

- **Temperature Range:** -20°C to 90°C

- **Pre-Programmed:** Supplied pre-programmed to desired specifications, includes 5m lead with empty pipe detection

- **Optional Kits:** SS316 coupling connection kits available

MME

Mini Electromagnetic Flowmeter with TFT Display



ORDER CODES	SPECIFICATIONS
MME15	½" MiniMag (15mm connection, 11mm ID bore). With pulse output
MME20	¾" MiniMag (20mm connection, 16mm ID bore). With pulse output
MME25	1" MiniMag (25mm connection, 20mm ID bore). With pulse output
OPTION	Resettable total button for easy reset function with M12 pwr inlet - mounted to IP65 handheld box

MM Compact

Mini Electromagnetic Flowmeter

The **ManuFlo MM MiniMag Flowmeters** are designed for precise measurement in compact, low-cost, and lightweight applications. Available in sizes from 15mm to 50mm, these flowmeters are virtually maintenance-free with no moving parts. Ideal for a variety of industrial applications where compact and accurate flow measurement is required.

KEY FEATURES:

- **Compact and Lightweight:** Low-cost design with no moving parts, ensuring minimal maintenance
- **LED Display:** 4-digit on-board LED display shows non-resettable total (litres), flowrate (litres/min), and temperature
- **Conductivity Requirement:** Measured liquid must have a conductivity of at least 20 µS/cm
- **Outputs:** NPN/PNP open collector pulse output and 4-20mA output, with M12 connection and 5 metre cable lead
- **High Accuracy:** ±2% accuracy and ±0.2% repeatability
- **Pressure and Temperature:** Operates up to 16 bar and 70°C; weight from 0.5 kg



- **Power Supply:** 19-30 VDC
- **Robust Construction:** -Stainless steel body, PEEK liner, SS316 electrodes, IP67 rated (no empty pipe detection)
- **Pre-Programmed:** Supplied programmed for your specific application; pulses can be re-programmed as needed

MM

Mini Electromagnetic Flowmeter with Display



ORDER CODES	SPECIFICATIONS
MM10	¼" MiniMag (8mm connection, 4mm bore) electromagnetic flowmeter. 0.5kg
MM15	½" MiniMag (15mm connection, 8mm bore) electromagnetic flowmeter. 0.6kg
MM20	¾" MiniMag (20mm connection, 12mm bore). 1.2kg
MM25	1" MiniMag (25mm connection, 15mm bore). 1.5kg
MM50	2" MiniMag (50mm connection, 15mm bore). 2.5kg

AMM

Mini Mag Budget Admixture Flowmeter

KEY FEATURES:

- **Interchangeable Models:** 15mm and 20mm models are directly interchangeable with MES20 20mm flowmeters (1000ppl, +12-24VDC)
- **Measurement Range:** 0.2 to 10 m/s with ±2% accuracy, pressure rating up to 1000 kPa (10 bar), powered by 12-24 VDC
- **Construction:** PVDF lined sensor, SS316 probes, integrated ground ring, BSP(m) threaded ends with BSP(f) connectors (SBU)
- **High Accuracy:** Accuracy unaffected by varying viscosity or specific gravity of liquids
- **Pulse Output:** Forward pulse direction, new M12 plug/lead, upgraded model with virtual empty pipe detection. These flowmeters are ideal for applications requiring reliable and accurate measurement of chemical admixtures



AMM

Mini Electromagnetic Flowmeter with Display



ORDER CODES	SPECIFICATIONS
AMM15	½" MiniMag (15mm connection, 8mm ID bore). With pulse output. +12VDC
AMM20	¾" MiniMag (20mm connection, 14mm ID bore). With pulse output. +12VDC
AMM25	1" MiniMag (25mm connection, 18mm ID bore). With pulse output. +12VDC

SMP

Budget Battery Powered Electromagnetic Flowmeter

The **ManuFlo SMP Budget Battery-Powered Electromagnetic Flowmeters** SMP series offers budget-friendly, battery-powered electromagnetic flowmeters with advanced features for accurate and reliable flow measurement. These flowmeters come with an LCD display and empty pipe detection, ideal for a variety of applications.



KEY FEATURES:

- Display and Outputs**
 - LCD display shows flow rate (LPS) and total (m³ - 1 decimal place)
 - IP66 rated, suitable for harsh environments
- Battery Powered:**
 - Powered internally by 2 x C-lithium cells (3-5 years life)
 - Replacement lithium batteries available (2 x C size, replaceable life: 2-4 years)
- Construction:**
 - Glass-filled polypropylene body
 - 316 Stainless Steel electrodes
 - Withstands temperatures up to 54°C and pressures up to 10 bar
 - Connection kit with NPT(f) threaded ends or coupling kit

SMP

Budget Battery Powered Electromagnetic Flowmeter



Fitting Kit for 2" and 3" models



2 inch

ORDER CODES	SPECIFICATIONS	WEIGHT (KG)	FLOWRANGE (L/MIN)	
			Min	Max
SMP025	25mm battery powered electromagnetic flowmeter (with empty pipe detection)	1.5	8.7	410
SMP050	50mm battery powered electromagnetic flowmeter (with empty pipe detection)	3	22.6	1130
SMP080	80mm battery powered electromagnetic flowmeter (with empty pipe detection)	4	52.8	2530

RMS High Pressure

Process Electromagnetic Flowmeters (Grout/Slurry)

The **ManuFlo RMS series** offers high-pressure electromagnetic flowmeters designed for measuring liquid grout, slurries, oxides, silica, chemicals, and recycled water.

KEY FEATURES:

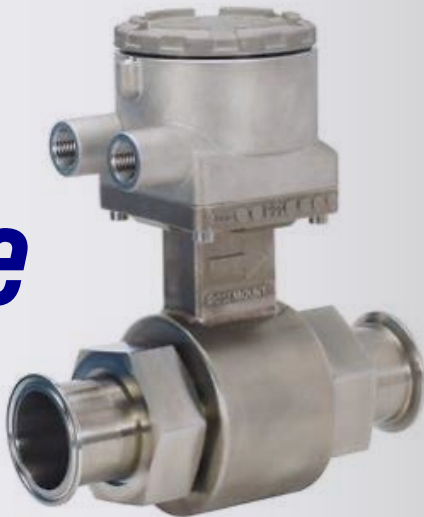
- **Applications:** Suitable for grout, slurries, oxides, silica, chemicals, and recycled water
- **Design:** Robust alloy housing with 8732E electronics and toughened glass face
- **Display:** LCD shows flow rate and cumulative/resettable totaliser; repositionable in 90-degree steps
- **Sensor Options:**
 - **WAFER (8711):** Up to 5100kPa
 - **FLANGED ANSI-150 (8705):** Tefzel or Teflon liner, SS316 or Hastelloy-C electrodes
- **Specifications:**
 - **Conductivity:** ≥5 microsiemens/cm
 - **Accuracy:** ±0.5% (0.9 to 10 m/s)
 - **Temperature:** Integral: -20 to 70°C, Remote: -20 to 149°C
 - **Pressure:** Wafer: up to 5100kPa, Flanged: up to 2000kPa



- **Outputs:** Pulse up to 10kHz, 4-20mA, power: 90-250 VAC or 12-42 VDC
- **Approvals:** Class III hazardous applications (NEMA 4x), up to 80% solids

RMS High Pressure

Budget Battery Powered Electromagnetic Flowmeter



ITEM	ORDER CODES			SPECIFICATIONS
Model	RMS			Electromagnetic flowmeter, wafer sensor (8711), S/S316 or Hast-C electrodes, Tefzel or Teflon liner, 90-250 VAC, with backlit LCD display, dual line flowrate and accumulative or resettable totaliser
		4		size 4 mm
Size		8		size 8 mm
		15		size 15 mm
		25		size 25 mm
		40		size 40 mm
		50		size 50 mm
		80		size 80 mm
		100		size 100 mm
		150		size 150 mm
		200		size 200 mm
OPTIONS			RMS-DC	12 - 42 VDC Powered 8732E Transmitter (in lieu of standard 90 - 250 VAC version)
			-M4R	Remote Display/Transmitter option, includes standard 2 metres length cable separation from sensor to Display
			-XCN	Extra cable (in excess of standard 2 metres), where n in Order Code extra cable length in metres)
			-TRB	Totaliser Reset Button to zero volume counts for manual batching, mounted to M20 cable port

KMS703

Electromagnetic Internal Battery Powered Flanged Flowmeters

The **ManuFlo KMS703 Flowmeters** are designed for accurate billing applications, suitable for waste water, bore water, irrigation, and other liquids.

KEY FEATURES:

- **Battery Powered:** Ideal for remote locations without external power supply

- **Rugged Construction:** No moving parts, ensuring a long, maintenance-free lifespan

- **Display Options:** Integral or remote electronic display with flowrate and bi-directional totaliser in a rugged enclosure

- **Outputs:** Pulse output for external reset counter or PLC (50Hz max., 50% duty cycle)



NMI-M10 AS4747
Australian Pattern Approved.
AS/NZS4020:2005
Approved for drinking water.

Specifications:

- **IP68 Protection:** Remote sensor with 5m cable, internal 316 stainless steel electrodes
- **Accuracy:** $\pm 0.3\%$ + 1 mm/s, for liquids with conductivity $>30\mu\text{S/cm}$
- **Temperature and Pressure:** 0 to 70°C; up to 1600 kPa (Flanged CL16)
- **Rectangular Bore Sensor:** Allows zero pipe runs before or after the meter

- **Custom Programming:** Fully custom programmed engineering units at the time of order

- **Approval:** NNMI-14/3/21 pattern approved for billing in Australia to NMI-M10 - AS4747

KMS703

Electromagnetic Internal Battery Powered Flanged Flowmeters



*Inbuilt grounding probes means no earth rings required.
+ZERO pipes runs*

ITEM	ORDER CODES			SPECIFICATIONS
Model	KMS703			'Battery Mag' Electromagnetic Flowmeter, AS4087 CL 16 Flanges, Rilsen liner, 316 Stainless Steel electrodes, with Integral IFC070C Display/Transmitter, Dual Internal Battery Pack
Size		025F		size 25 mm
		040F		size 40 mm
		050F		size 50 mm
		065F		size 65 mm
		080F		size 80 mm
		100F		size 100 mm
		150F		size 150 mm
		200F		size 200 mm
		225F		size 225 mm
		250F		size 250 mm
		300F		size 300 mm
OPTIONS			-R70	IFC070 remote display/transmitter option includes (standard) 5m of separation cable from flow sensor to display
			KBMBAT	IFC070 Replacement dual Battery pack for IFC070
			70PC-3M	IFC070 Replacement IP68 pulse cable, 3m length
			70PC-20M	IFC070 Replacement IP68 pulse cable, 20m length
			-APA	Australian Pattern Approval certification NMI 14/3/21

KMS503F

Electromagnetic Flanged Flowmeters

The **ManuFlo KMS503F flowmeters** are designed for versatile water applications, including bore water, irrigation, greywater, and raw water. These flowmeters feature a special rectangular reduced bore, eliminating the need for pipe runs before or after the meter.



NMI-M10 AS4747
Australian Pattern Approved.
AS/NZS4020:2005
Approved for drinking water.

KEY FEATURES:

- Applications:** Suitable for various water applications
- Custom Programming:** K-MAGS fully wired and custom programmed
- Construction:** Rilsen liner, 316 stainless steel electrodes, Australian flanges (16 bar)
- Maintenance-Free:** No moving parts for virtually maintenance-free operation
- Accuracy:** ±0.5% of reading, with open collector pulse up to 10kHz and 4-20mA output
- Power Supply:** 85-253 VAC or 17-31 VDC
- Display:** Integral or remote display via a 2-metre cable; totaliser up to 10 digits with flowrate display

- Durability:** Cast alloy display box, max temperature 70°C

- Grounding Electrodes:** Built-in grounding electrodes included

- Programmable:** Via 4 tactile buttons, magnetic wand, or HART to PC

- IP68 Protection:** Flow sensor is IP68 rated (remote version when potted)

- Rectangular Bore Sensor:** Allows zero pipe runs before or after the meter

- Conductivity Requirement:** Measured liquid must have a conductivity of at least 20 µS/cm

KMS503F

Electromagnetic Flanged Flowmeters



ITEM	ORDER CODES		SPECIFICATIONS	FLOWRANGE (L/MIN)	
Model	KMS503		NB 'Reduced Bore' Electro-magnetic Flowmeter, AS2129 TABLE Flanges, Rilsen liner, 316 Stainless Steel electrodes, with Integral IFC050C Display/Transmitter, 85 - 253 VAC Supply Voltage	Min (+/-2%)	Q3 Max (+/-0.5%)
Size		025F	size 25mm	0.7	267
		040F	size 40mm	1.6	670
		050F	size 50mm	2.6	1000
		065F	size 65mm	4.2	1670
		080F	size 80mm	7	2670
		100F	size 100mm	11	4170
		150F	size 150mm	27	10500
		200F	size 200mm	42	16000
		250F	size 250mm	66	25000
OPTIONS		300F	size 300mm	106	35000
			-50DC	IFC050 Display Powered from 17 - 32 VDC (in lieu of standard version 85 - 240 VAC)	
			-R50	IFC050 Remote display/transmitter option includes (standard) 5m of separation cable from flow sensor to display	
			-XCn	Extra cable (in excess of standard 2 metres), where n in roPduct Code extra cable length in metres)	
			-SJP	Sensor Junction box with cables potted to IP68, for wet area applications for example where sensor is located in a pit	
			0	Adder price for IFC100 (Higher Spec) display Powered from 85 - 240 VAC, with control input for TRB	
			-HS100DC	Adder Price for IFC100 (Higher Spec) Display Powered from 10 - 32 VDC (in lieu of standard version 85 - 240 VAC)	

KMS501W

Electromagnetic Wafer Flowmeters
with 'S50' Display and Outputs

The **ManuFlo KMS501W Flowmeters** are ideal for tradewaste, wastewater, bore water, and irrigation applications, handling up to 10% solids.

KEY FEATURES:

- Applications:** Suitable for wastewater, bore water, and irrigation (up to 10% solids)
- Custom Programming:** K-MAGS fully wired and custom programmed, ready to use
- Construction:** PFA (Teflon) liner, Hastelloy C electrodes, wafer connection
- Maintenance-Free:** No moving parts, virtually maintenance-free
- Accuracy:** Self-verifying, ±0.5% of MV +1 mm/s
- Power Supply:** 85-253 VAC or 17-31 VDC (11-40 VDC for S100 display option)
- Display:** Totaliser up to 8 digits with flowrate display; integral or remote display via 2-metre cable



- Outputs:** Optional Local Water Authority Tradewaste Mil-Spec pulse sampler, 4-20mA output plugs, open collector pulse to 10kHz
- Durability:** Cast alloy display enclosure, grounding earth ring supplied on request
- Programmable:** Via 4 tactile buttons, magnetic wand, or HART to PC
- IP68 Protection:** Flow sensor (remote version when potted)
- Temperature Range:** -25 to 120°C
- Conductivity Requirement:** Measured liquid must have conductivity of at least 5 µS/cm (20 µS/cm for water)

KMS501W

Electromagnetic Wafer Flowmeters
with 'S50' Display and Outputs



ITEM	ORDER CODES			SPECIFICATIONS
Model	KMS501			NB Electro-magnetic Flowmeter, Wafer connections, PFA liner, Hast-C electrodes, with Integral IFC050C Display/Transmitter, 85-253 VAC Supply Voltage
Size		015W		Size 15mm
		025W		Size 25mm
		040W		Size 40mm
		050W		Size 50mm
		080W		Size 80mm
		100W		size 100mm
		150W		size 150mm
OPTIONS			-50DC	IFC050 Display Powered from 17 - 32 VDC (in lieu of standard version 85 - 240 VAC)
			-R50	IFC050 Remote display/transmitter option includes (standard) 5m of separation cable from flow sensor to display
			-MB	Modbus communication
			-XCn	Extra cable (in excess of standard 2 metres), where n in roPduct Code extra cable length in metres)
			-SJP	Sensor Junction box with cables potted to IP68, for wet area applications for example where sensor is located in a pit
			-TW	Hardware, wiring and programming required to conform to local water authority trade waste requirements
			-TW-R	Remote Mil-Spec Sampler/mA outputs plug pack, wall mountable
			-OSV	Initial On-site Verification/operation/calibration check of trade waste flowmeter following installation (by others)
			-OSV-A	Annual On-site Verification/operation/calibration check of trade waste flowmeter
			-HS100	Adder price for IFC100 (Higher Spec) display Powered from 85 - 240 VAC, with control input for TRB
			-HS100DC	Adder Price for IFC100 (Higher Spec) Display Powered from 10 - 32 VDC (in lieu of standard version 85 - 240 VAC)

KMS502F

Electromagnetic Flanged Flowmeters
with 'S50' Display and Outputs

The **ManuFlo KMS502F Flowmeters** are ideal for tradewaste and batching applications, handling wastewater, bore water, irrigation, and chemicals with up to 20% solids.

KEY FEATURES:

- **Applications:** Suitable for wastewater, bore water, irrigation, chemicals (up to 20% solids)
- **Custom Programming:** K-MAGS wired and custom programmed for admixtures and plant recycle water
- **Construction:** Polypropylene or hard rubber liner, Hastelloy C electrodes, Australian flanges
- **Maintenance-Free:** No moving parts, virtually maintenance-free
- **Accuracy:** Self-verifying, ±0.5%. Open collector pulse to 10kHz and 4-20mA outputs
- **Power Supply:** 85-253 VAC or 17-31 VDC
- **Display:** Totaliser up to 10 digits with flowrate display; integral or remote display via a 2-meter cable



- **Optional Features:** Sydney Water Tradewaste Mil-Spec sampler, 4-20mA output plugs, and other water authority requirements
- **Durable Enclosure:** Cast alloy display box with grounding earth ring supplied
- **Programmable:** Via 4 tactile buttons, magnetic wand, or HART to PC
- **IP68 Protection:** Flow sensor (remote version when potted)
- **Temperature Range:** -5 to 90°C (PP)
- **Conductivity Requirement:** Measured liquid must have conductivity of at least 5 µS/cm (20 µS/cm for water)

KMS502F

Electromagnetic Flanged Flowmeters
with 'S50' Display and Outputs



ITEM	ORDER CODES		SPECIFICATIONS
Model	KMS502		NB Electro-magnetic Flowmeter, Wafer connections, PFA liner, Hast-C electrodes, with Integral IFC050C Display/Transmitter, 85-253 VAC Supply Voltage
Size		025F	Size 25mm
		040F	Size 40mm
		050F	Size 50mm
		080F	Size 80mm
		100F	Size 100mm
		150F	Size 150mm
		200F	Size 200mm
		225F	Size 225mm
		250F	Size 250mm
OPTIONS		300F	Size 300mm
			-50DC IFC050 Display Powered from 17 - 32 VDC (in lieu of standard version 85 - 240 VAC)
			-R50 IFC050 Remote display/transmitter option includes (standard) 5m of separation cable from flow sensor to display
			-MB Modbus communication
			-XCN Extra cable (in excess of standard 2 metres), where n in roPduct Code extra cable length in metres)
			-SJP Sensor Junction box with cables potted to IP68, for wet area applications for example where sensor is located in a pit
			-TW Hardware, wiring and programming required to conform to local water authority trade waste requirements
			-TW-R Remote Mil-Spec Sampler/mA outputs plug pack, wall mountable
			-OSV Initial On-site Verification/operation/calibration check of trade waste flowmeter following installation (by others)
			-OSV-A Annual On-site Verification/operation/calibration check of trade waste flowmeter
			-HS100 Adder price for IFC100 (Higher Spec) display Powered from 85 - 240 VAC, with control input for TRB
			-HS100DC Adder Price for IFC100 (Higher Spec) Display Powered from 10 - 32 VDC (in lieu of standard version 85 - 240 VAC)

KMS506-S

Electromagnetic Flowmeters with 'S50' or 'S100' Display and Outputs

The **ManuFlo KMS506-S Flowmeters** are ideal for food, beverage, and pharmaceutical applications, ensuring precise blending, dosing, and batching.

KEY FEATURES:

- **Applications:** Suitable for soft drinks, beer, wine, fruit juices, milk, and other dairy products
- **Custom Programming:** K-MAGS fully wired and custom programmed, ready to use
- **Construction:** PFA (Teflon) liner, Hastelloy C electrodes, sanitary 'Tri-clamp' connections
- **Maintenance-Free:** No moving parts, virtually maintenance-free
- **Accuracy:** Self-verifying, ±0.5%. Open collector pulse to 10kHz and 4-20mA outputs
- **Power Supply:** 85-253 VAC or 17-31 VDC
- **Display:** Totaliser up to 10 digits with flowrate display, pulse, and mA outputs. Integral or remote display via 2-metre cable



- **Programmable:** Via 4 tactile buttons, magnetic wand, or HART to PC

- **IP68 Protection:** Flow sensor (remote version when potted)

- **Temperature Range:** -40 to 120°C (integral display), -40 to 140°C (remote display)

- **Conductivity Requirement:** Measured liquid must have conductivity of at least 5 µS/cm (20 µS/cm for water)

- **CIP Cleaning:** Suitable for cleaning with acids and caustic solutions

KMS506-S

Electromagnetic Flowmeters with 'S50' or 'S100' Display and Outputs



ITEM	ORDER CODES		SPECIFICATIONS
Model	KMS506-S		NB Electro-magnetic Flowmeter with sanitary Tri-clamp connections, PFA liner, Hast-C electrodes. IFC050C Integrated Display/Transmitter, 85-253 VAC Supply Voltage
Size		15	Size 15mm Flowmeter with ½" sanitary Tri-clamp connections
		25	Size 25mm Flowmeter with 1" sanitary Tri-clamp connections
		40	Size 40mm Flowmeter with 1 ½" sanitary Tri-clamp connections
		50	Size 50mm Flowmeter with 2" sanitary Tri-clamp connections
		80	Size 80mm Flowmeter with 3" sanitary Tri-clamp connections
		100	Size 100mm Flowmeter with 4" sanitary Tri-clamp connections
OPTIONS		-50DC	IFC050 Display Powered from 17 - 32 VDC (in lieu of standard version 85 - 240 VAC)
		-R50	IFC050 Remote display/transmitter option includes (standard) 5m of separation cable from flow sensor to display
		-XCN	Extra cable (in excess of standard 2 metres), where n in Product Code extra cable length in metres)
		-JBSS	Sensor Junction box with cables potted to IP68, for wet area applications for example where sensor is located in a pit
		-MB	Modbus communication
		-HS100	Adder price for IFC100 (Higher Spec) display Powered from 85 - 240 VAC, with control input for TRB
		-HS100DC	Adder Price for IFC100 (Higher Spec) Display Powered from 10 - 32 VDC (in lieu of standard version 85 - 240 VAC)

KMS302F

Magnetic Flanged Flowmeters with 'S300' Display and Outputs

The **ManuFlo KMS302F Flowmeters** are ideal for food, beverage, and pharmaceutical applications, ensuring precise blending, dosing, and batching.

KEY FEATURES:

- Applications:** Suitable for grout, oxides, silicafume, recycle-water, and slurries (up to 60% solids)
- Construction:** Polypropylene liner, Hastelloy C electrodes
- Custom Programming:** K-MAGS fully wired and custom programmed
- Sizes:** Flow sensor sizes range from 25 to 150mm
- Connections:** Flanged connections suitable for ANSI-150 or AS4087 flanges
- Accuracy:** Self-verifying with ±0.2% accuracy
- Power Supply:** 85-253 VAC or optional 11-31 VDC



Australian Government
Department of Industry,
Innovation and Science

**National
Measurement
Institute**

AS4747 / NMI-M10
Pattern Approved.
For Custody Transfers

- Display:** Totaliser up to 10 digits with flowrate display; integral or remote display via 2-metre cable
- Outputs:** Pulse up to 10kHz and 4-20mA outputs, HART protocol
- Durability:** Durable cast alloy display box (integral or remote)
- Advanced Features:** Built-in flow profiler for higher accuracy, IP68 remote flow sensor (when potted), empty pipe detection
- Pressure and Temperature:** Rated to 1600 kPa; process temperature from -25°C to 120°C
- Conductivity Requirement:** Measured liquid must have conductivity of at least 5 µS/cm (20 µS/cm for water)



KMS302F

Magnetic Flanged Flowmeters with 'S300' Display and Outputs



ITEM	ORDER CODES			SPECIFICATIONS	FLOWRANGE (L/MIN)		
Model	KMS302			NB Electro-magnetic Flowmeter, Polypropylene liner, Hast-C electrodes, with Integral High Spec. IFC300C Display/Transmitter, 85-253 VAC Supply Voltage	MIN(+/- 3%)	MAX(+/- 0.5%)	MAX(+/- 0.5%)
Size		025F		25 mm size with ASME 150 LB Flanges	4	30	330
		040F		40 mm size with AS 2129 Table Flanges	11	80	905
		050F		50 mm size with AS4087 CL 16 flanges	14	75	1413
		080F		80 mm size with AS4087 CL 16 flanges	31	150	3619
		100F		100 mm size with AS4087 CL 16 flanges	56	250	5655
		150F		150 mm size with AS4087 CL 16 flanges	83.3	1050	10500
		200F		200 mm size with AS4087 CL 16 flanges	60	1666	16667
OPTIONS			-30DC	IFC300 Display Powered from 10 - 32 VDC (in lieu of standard version 85 - 240 VAC)			
			0	IFC300 remote display/transmitter option includes (standard) 5m of separation cable from flow sensor to display			
			-XCN	Extra cable (in excess of standard 2 metres), where N in Product Code extra cable length in metres)			
			-TRB	Totaliser Reset Button to zero volume counts for manual batching, mounted to M20 cable port.			
			-SJP	Sensor Junction box with cables potted to IP68, for wet area applications for example where sensor is located in a pit			
			-APA	Australian Pattern Approval certification NMI 14/3/21			
			-NATA	Flowmeter Tested and Certified at NATA lab			



KMS305W

Electromagnetic Wafer Flowmeters with 'S300' Display and Output

The **ManuFlo KMS305W Flowmeters** are ideal for measuring aggressive chemicals, slurries, oxides, grouts, and dosing applications, handling up to 80% solids.

KEY FEATURES:

- Construction:** Ceramic liner with platinum electrodes
- Custom Programming:** K-MAGS fully wired and custom programmed
- Sizes:** Flow sensor sizes from 2.5mm to 100mm
- Connections:** Wafer connection suits ANSI 150lb flanges
- Accuracy:** Self-verifying with ±0.5% accuracy
- Power Supply:** 85-253 VAC or 11-31 VDC
- Display:** Totaliser up to 10 digits with flowrate display; integral or remote display via 2-metre cable



- Outputs:** Pulse up to 10kHz and 4-20mA outputs, HART protocol

- Durable Enclosure:** Cast alloy display box (integral) or plastic (remote)

- Advanced Features:** Built-in flow profiler for higher accuracy, self-verifying accuracy of ±0.3%, IP68 remote flow sensor (when potted), empty pipe detection

- Pressure and Temperature:** Rated to 1600 kPa; process temperature from -10°C to 130°C

- Conductivity Requirement:** Measured liquid must have conductivity of at least 5 µS/cm (20 µS/cm for water)

- Ground Ring:** Sizes 2.5mm - 15mm supplied pre-fitted with SST ground ring (other materials available on request)

KMS305W

Electromagnetic Wafer Flowmeter with 'S300' Display and Output



ORDER CODES	SPECIFICATIONS	FLOWRANGE (L/MIN)		
		MIN (+/-3%)	MIN(+/-0.5%)	MAX (+/-0.5%)
KMS305-2.5W	2 mm NB Electro-magnetic Flowmeter, 'Wafer' connections, Ceramic liner, Cermet Electrodes, inc. Integrated Stainless Steel Grounding Rings, with Integral High Spec. IFC300C Display/Transmitter, 85-253 VAC Supply Voltage.	0.1	0.7	3.5
KMS305-006W	6 mm NB Electro-magnetic Flowmeter, 'Wafer' connections, Ceramic liner, Cermet Electrodes, inc. Integrated Stainless Steel Grounding Rings, with Integral High Spec. IFC300C Display/Transmitter, 85-253 VAC Supply Voltage.	0.3	4	20
KMS305-010W	10 mm NB Electro-magnetic Flowmeter, 'Wafer' connections, Ceramic liner, Cermet Electrodes, inc. Integrated Stainless Steel Grounding Rings, with Integral High Spec. IFC300C Display/Transmitter, 85-253 VAC Supply Voltage.	0.6	2	56
KMS305-015W	15 mm NB Electro-magnetic Flowmeter, 'Wafer' connections, Ceramic liner, Cermet Electrodes, inc. Integrated Stainless Steel Grounding Rings, with Integral High Spec. IFC300C Display/Transmitter, 85-253 VAC Supply Voltage.	1.5	12	127
KMS305-025W	25 mm NB Electro-magnetic Flowmeter, 'Wafer' connections, Ceramic liner, Cermet Electrodes, with Integral High Spec. IFC300C Display/Transmitter, 85-253 VAC Supply Voltage.	4	30	330
KMS305-040W	40 mm NB Electro-magnetic Flowmeter, 'Wafer' connections, Ceramic liner, Cermet Electrodes, with Integral High Spec. IFC300C Display/Transmitter, 85-253 VAC Supply Voltage.	11	80	905
KMS305-050W	50 mm NB Electro-magnetic Flowmeter, 'Wafer' connections, Ceramic liner, Cermet Electrodes, inc. with Integral High Spec. IFC300C Display/Transmitter, 85-253 VAC Supply Voltage.	14	75	1413
KMS305-080W	80 mm, Wafer, Ceramic liner, Platinum electrodes, not including Ground Rings	31	150	3619
KMS305-100W	100 mm NB Electro-magnetic Flowmeter, 'Wafer' connections, Ceramic liner, Cermet Electrodes, with Integral High Spec. IFC300C Display/Transmitter, 85-253 VAC Supply Voltage.	56	250	5655
OPTIONS	-30DC	IFC300 Display Powered from 10 - 32 VDC (in lieu of standard version 85 - 240 VAC)		
	-R30	IFC300 remote display/transmitter option includes (standard) 5m of separation cable from flow sensor to display		
	-XCn	Extra cable (in excess of standard 2 metres) where n in Order Codes extra cable length in metres		
	-TRB	Totaliser Reset Button to zero volume counts for manual batching, mounted to M20 cable port		
	-SJP	Sensor Junction box with cables potted to IP68, for wet area applications for example where sensor is located in a pit		

KMS307W

Magnetic Wafer Flowmeter with ‘Non Wetted Electrodes’

The **ManuFlo KMS307W Flowmeters** are designed for corrosive, abrasive, and very low conductive liquids, featuring the latest capacitive mag technology and non-wetted electrodes.

KEY FEATURES:

- Technology:** Latest ‘Capacitive Mag’ technology with no electrodes in contact with the medium, ensuring maintenance-free operation
- Construction:** High-performance ceramic liner; suitable for CIP and SIP cleaning
- Applications:** Ideal for liquids with up to 75% solids content, including
 - Water mixed with oil or metallic particles
 - Adhesives, fibrous products (molasses, syrup)
 - Oil-based products (vegetable oils)
 - Low conductive liquids (alcohols, spirits, glycols, glycerine)
- Accuracy:** Self-verifying, $\pm 0.5\% \pm 5\text{mm/s}$, with empty pipe detection
- Sizes:** Flow sensor sizes from 25mm to 100mm



Toxic, aggressive and abrasive mediums
Abrasive slurries: grouts, cement, emulsions including paint and bitumen

- Connections:** Wafer connections suitable for ANSI 150lb and TABLE flanges
- Power Supply:** 85-253 VAC or 11-31 VDC
- Display:** Integral ‘S300 CAP’ display with totaliser and flowrate display; durable die-cast aluminium display box (optional 316L SST)
- Outputs:** Pulse to 10kHz and 4-20mA outputs, HART protocol; programmable via front or HART
- Specifications:**
 - Pressure:** DN25-80: 1600 kPa
 - Process temperature:** -40°C to 100°C
 - Measured liquid conductivity:** as low as 0.05 $\mu\text{S/cm}$ or 1 $\mu\text{S/cm}$ for demineralised water

KMS307W

Magnetic Wafer Flowmeter with ‘Non Wetted Electrodes’



Toxic, aggressive and abrasive mediums
Abrasive slurries: grouts, cement, emulsions including paint and bitumen

ORDER CODES	SPECIFICATIONS	FLOWRANGE (L/MIN)		
		MIN (+/- 3%)	MIN(+/- 0.5%)	MAX (+/- 0.5%)
KMS307-025W	25 mm, Wafer, Ceramic liner, non wetted electrodes, with Integral ‘S300 CAP’ Display, 85 - 253 VAC	4	30	330
KMS307-040W	40 mm NB ‘Capacitive’ Electro-magnetic Flowmeter, Wafer connections, Ceramic liner, ‘Special’ non wetted electrodes, with Integral ‘IFC300 CAP’ Display/ Transmitter, 85 - 253 VAC Supply Voltage	11	75	905
KMS307-050W	50 mm, Wafer, Ceramic liner, non wetted electrodes, with Integral ‘S300 CAP’ Display, 85 - 253 VAC	14	50	1413
KMS307-080W	80 mm NB ‘Capacitive’ Electro-magnetic Flowmeter, Wafer connections, Ceramic liner, ‘Special’ non wetted electrodes, with Integral ‘IFC300 CAP’ Display/ Transmitter, 85 - 253 VAC Supply Voltage	31	150	3619
KMS307-100W	100 mm NB ‘Capacitive’ Electro-magnetic Flowmeter, Wafer connections, Ceramic liner, ‘Special’ non wetted electrodes, with Integral ‘IFC300 CAP’ Display/ Transmitter, 85 - 253 VAC Supply Voltage	56	250	5655
OPTION	-30DC	IFC300 Display Powered from 10 - 32 VDC (in lieu of standard version 85 - 240 VAC)		
	-TRB	Totaliser Reset Button to zero volume counts for manual batching, mounted to M20 cable port		

White PVC F-Slip-Socket Tees

For PN6, PN12, PN18 Series 1 PVC
Pipe Selections



The **ManuFlo White PVC F-Slip-Socket Tees** with glued grey PVC adaptor keyway insert - For PN6, PN12, PN18 Series 1 PVC pipe sections.

ORDER CODES	SPECIFICATIONS
PVC20	PIPE ADAPTER FITTINGS. 20mm (¾") PVC Class18, Cat.19 high pressure pipe slip(f) adapter fitting to 1100 kPa
PVC25	PIPE ADAPTER FITTINGS. 25mm (1") PVC Class18, Cat.19 high pressure pipe slip(f) adapter fitting to 1100 kPa
PVC32	PIPE ADAPTER FITTINGS. 32mm (1¼") PVC Class18, Cat.19 high pressure pipe slip(f) adapter fitting to 1100 kPa
PVC40	PIPE ADAPTER FITTINGS. 40mm (1½") PVC Class18, Cat.19 high pressure pipe slip(f) adapter fitting to 1100 kPa
PVC50	PIPE ADAPTER FITTINGS. 50mm (2") PVC Class18, Cat.19 high pressure pipe slip(f) adapter fitting to 1100 kPa
PVC65	PIPE ADAPTER FITTINGS. 65mm (2½") PVC Class18, Cat.19 high pressure pipe slip(f) adapter fitting to 1100 kPa
PVC80	PIPE ADAPTER FITTINGS. 80mm (3") PVC Class18, Cat.19 high pressure pipe slip(f) adapter fitting to 1100 kPa
PVC100	PIPE ADAPTER FITTINGS. 100mm (4") PVC Class18, Cat.19 high pressure pipe slip(f) adapter fitting to 1100 kPa

Galvanised Malleable Cast Iron Parallel Thread

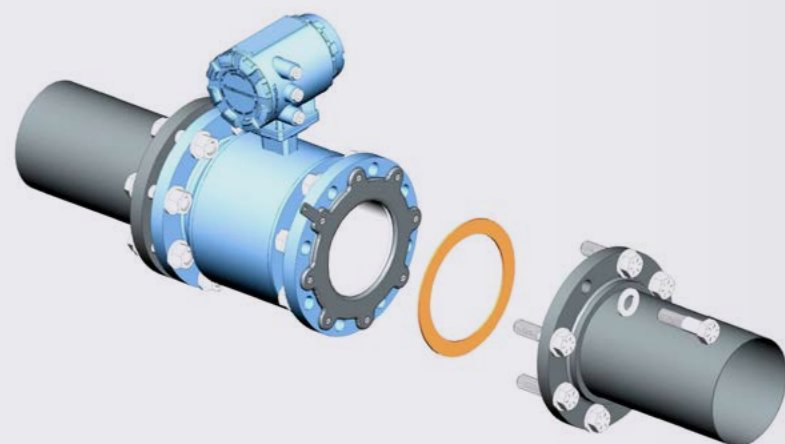
For use with any BSP(m) connectable
pipe section or fittings



ORDER CODES	SPECIFICATIONS
GAL25	25mm, 1" BSP-F galvanised iron pipe tee adaptor (tapped) and fitted with ManuFlo part BSPB nipple adaptor to accept RPFS and MRT flowmeters, calibrated on rig with tabled results on certificate (when purchased with MRT flowmeters)
GAL32	32mm, 1 1/4" BSP-F galvanised iron pipe tee adaptor (tapped) and fitted with ManuFlo part BSPB nipple adaptor to accept RPFS and MRT flowmeters, calibrated on rig with tabled results on certificate (when purchased with MRT flowmeters)
GAL40	40mm, 1 1/2" BSP-F galvanised iron pipe tee adaptor (tapped) and fitted with ManuFlo part BSPB nipple adaptor to accept RPFS and MRT flowmeters, calibrated on rig with tabled results on certificate (when purchased with MRT flowmeters)
GAL50	50mm, 2" BSP-F galvanised iron pipe tee adaptor (tapped) and fitted with ManuFlo part BSPB nipple adaptor to accept RPFS and MRT flowmeters, calibrated on rig with tabled results on certificate (when purchased with MRT flowmeters)
GAL25-T2	25mm, 1" BSP-F galvanised iron pipe tee adaptor (tapped) and fitted with ManuFlo part BSPB and inc. straight lengths of 1" gal pipe before and after Tee, calibrated on rig with tabled results on certificate (when purchased with MRT Flowmeter)
GAL32-T2	PIPE ADAPTER FITTINGS. 32mm (1 ¼") BSP-m. pipe threaded ends 500mm long, fitted to Gal. pipe tee keyway adaptor fitting
GAL40-T2	PIPE ADAPTER FITTINGS. 40mm (1 ½") BSP-m. pipe threaded ends 600mm long, fitted to Gal. pipe tee keyway adaptor fitting
GAL50-T2	PIPE ADAPTER FITTINGS. 50mm (2") BSP-m. pipe threaded ends 600mm long, fitted to Gal. pipe tee keyway adaptor fitting
GAL80-T2	PIPE ADAPTER FITTINGS. 80mm (3") BSP (male) tapered threaded ends. BSPB keyway welded into 600mm long Gal. pipe
GAL100-T2	PIPE ADAPTER FITTINGS. 100mm (4") BSP (male) tapered threaded ends. BSPB keyway welded into 600mm long Gal. pipe
SS25	PIPE ADAPTER FITTINGS. 25mm (1") Stainless Steel 316 adaptor tee fitting with keyway (BSP-f) threaded ends
SS50	PIPE ADAPTER FITTINGS. 50mm (2") Stainless Steel 316 adaptor tee fitting with keyway (BSP-f) threaded ends

Connection Kits PVC

For flanged or water style flowmeters



ITEM	ORDER CODES		SPECIFICATIONS
Model	CK		Table d/ansi-150 qty 2 x pvc slip flange kit. To 1200 kpa (12 bar) with bolts and neoprene gaskets with 316s/s earth grounding ring with strap for kms and rms flowmeters. (Supplied already mounted to flowmeter sensor for easy install.)
	FK		Slip flange kit suites pvc pressure pipe, 2 x glue in pvc flanges with m12 gal nuts, bolts & washers, inc. Neoprene gaskets, pressure to 1200 kpa (12 bar), supplied pre-mounted to flowmeter for easy install.
Size		PVC15	Size 15 mm
		PVC25	Size 25 mm
		PVC40	Size 40 mm
		PVC50	Size 50 mm
		PVC80	Size 80 mm
		PVC100	Size 100 mm
		PVC150	Size 150 mm

Pressure Sensors



PI1704
PAGE 136



Flush Pressure Sensor
PAGE 134



KPS101
PAGE 138



PG2794

Flush Pressure Sensor with Analogue Display



The **ManuFlo PG2794 Flush Pressure Sensor with Analogue Display** is an electronic pressure sensor with an analogue display, ideal for grout measurement applications. It features a G1" M Flush Ceramic connection and operates within a range of 0 to 10 bar.

This pressure sensor is equipped with a switching signal and configurable analogue signal outputs, providing precise and reliable pressure measurements. The robust design, including IP67/IP69K protection, ensures durability and performance in challenging environments. Other ranges are available on request to meet specific measurement needs.

PG2793

Flush Pressure Sensor with Analogue Display



The **ManuFlo PG2793 Flush Pressure Sensor with Analogue Display** is an electronic pressure sensor with an analogue display, designed specifically for grout pressure measurement applications. It features a G1" M Flush Ceramic connection and operates within a range of 0 to 25 bar.

This sensor provides precise and reliable pressure readings, with configurable switching and analogue signal outputs. The robust construction ensures durability, including IP67/IP69K protection, making it suitable for challenging environments. Additional ranges are available on request to meet specific measurement needs.

PI1704

Flush Pressure Sensor with Display



The **ManuFlo PI1704 and E33208** are electronic pressure sensors with a display, designed for hygienic applications in the food and beverage industry. These sensors feature a 1.5" Tricomp connection and operate within a range of 0 to 10 bar.

They offer switching signals, analogue signals, and IO-Link capabilities, providing versatile output options. The robust construction includes IP67, IP68, and IP69K protection ratings, making them suitable for demanding environments. Additional ranges are available on request to meet specific measurement needs.

KPS605

Pressure Transmitter

The **ManuFlo KPS605** pressure transmitter is designed for advanced process pressure and hydrostatic level applications. Featuring a robust design with a corrosion and abrasion-resistant ceramic diaphragm, it offers exceptional durability. The KPS605 operates within a range of 25 mbar to 100 bar (0.73 to 1450 psi) and can handle temperatures up to +150°C (+302°F). It supports various connections, including threads, flanges, and hygienic fittings.

KEY FEATURES:

- **Robust Design:** Corrosion and abrasion-resistant ceramic diaphragm
- **Wide Range:** Operates from 25 mbar to 100 bar (0.73 to 1450 psi)
- **High Temperature:** Handles temperatures up to +150°C (+302°F)

ORDER CODES	CONNECTION	RANGE
KPS605-5	G1" M Flush Ceramic	0-5 bar
KPS605-10	G1" M Flush Ceramic	0-10 bar



- **Versatile Connections:** Available with various threads, flanges, and hygienic fittings
- **Output Options:** 2-wire, 4-20 mA, HART®, FF, Profibus-PA, Bluetooth®
- **Durability:** Certified for Security Integrity Level 2/3 (SIL 2/3)

KPS101

Pressure Transmitter

The **ManuFlo KPS101** is an ultra-compact pressure transmitter designed for basic pressure and level applications. It is ideal for absolute and gauge pressure measurement of gases and liquids, offering a cost-effective solution for simple process pressure applications and hydrostatic level measurement in open vessels.

KEY FEATURES:

- **Compact Design:** Ultra-compact with recessed stainless steel diaphragm, suitable for installation in limited spaces
- **Wide Range:** Operates from 25 mbar to 100 bar (0.73 to 1450 psi)
- **Versatile Connections:** Available with thread options including 1/4, 1/2 NPT (male) and G1/4, G1/2 (male)
- **Output:** 2-wire 4-20 mA

- **High Accuracy:** Extraordinary accuracy of $\pm 0.25\%$ and long-term stability of $\pm 0.1\%$ within 1 year
- **Temperature Stability:** Outstanding temperature stability
- **Ingress Protection:** Rated up to IP68 / NEMA 6P
- **Safety Approval:** ATEX/IECEx intrinsically safe approval for Zone 0



ORDER CODES	CONNECTION	RANGE
KPS101-1	G1/2" M	0-1 bar
KPS101-10	G1/2" M	0-10 bar

KPS102

Pressure Transmitter

The **ManuFlo KPS102** is an ultra-compact pressure transmitter designed for hygienic pressure and level applications in the food, beverage, and pharmaceutical industries. It excels in front-flush and aseptic installations, providing exceptional accuracy and temperature stability to ensure process reliability under all conditions.

KEY FEATURES:

- **High Accuracy:** Outstanding accuracy and temperature stability for reliable performance
- **Hygienic Design:** Specifically designed for demanding hygienic applications and front-flush installations
- **Wide Temperature Range:** Handles process temperatures up to 125°C (257°F) with optional temperature decoupling up to 300°C (572°F)



- **Versatile Connections:** Wide range of aseptic process connections
- **Output Options:** Available with 4-20 mA and 0-10 VDC communication options
- **Approvals:** Ex-i for explosion safety, and hygienic approvals including 3-A, FDA, and EC 1935/2004

ORDER CODES	CONNECTION	RANGE
KPS102-1	G1/2" M	0-1 bar
KPS102-10	G1/2" M	0-10 bar

KPSM101

Pressure Switch

The **ManuFlo KPSM101** is an electronic pressure switch designed for basic pressure and level applications. It features an integrated display with switch state indication and a 2-button setup, making it user-friendly and efficient. This cost-effective pressure switch is ideal for absolute or gauge pressure measurement of liquids and gases, suitable for simple process applications such as monitoring pumps, compressors, or other machinery, as well as hydrostatic level measurement in open vessels.

KEY FEATURES:

- **Integrated Display:** Provides switch state indication and a 2-button setup for easy configuration
- **Wide Range:** Measures pressures from 0.1 to 600 bar (1.5 to 8700 psi) with a maximum temperature of +125°C (+257°F)
- **Robust Design:** Features a fully welded stainless steel diaphragm for corrosion resistance against aggressive media



- **Flexible Outputs:** Fully configurable with IO-Link and PNP/NPN as standard I/O, and options for 4-20 mA, 0-10 V, or PNP/ NPN as secondary output
- **Temperature Stability:** Offers excellent temperature stability due to advanced digital compensation

ORDER CODES	CONNECTION	RANGE
KPSM101	G1/2" M	0.1-600 bar

KPSM102

Pressure Switch

The **ManuFlo KPSM102** is an electronic pressure switch designed for hygienic level and pressure applications, making it ideal for the food, beverage, and pharmaceutical industries. This pressure switch features an integrated display with switch state indication and a 2-button setup for easy configuration. It provides long-term stable absolute or gauge pressure measurement of liquids and gases, as well as hydrostatic level measurement, even during SIP/CIP cleaning cycles.

KEY FEATURES:

- **Integrated Display:** Provides switch state indication and a 2-button setup for user-friendly operation
- **Wide Range:** Measures pressures from 0.1 to 40 bar (4 to 580 psi) with a maximum temperature of +150°C (+302°F) for SIP/CIP processes
- **Hygienic Design:** Equipped with many flush-mounted hygienic process connections, also 3A certified, and a fully welded front-flush diaphragm



- **Flexible Outputs:** Fully configurable with IO-Link and PNP/NPN as standard I/O, and options for 4-20 mA, 0-10 V, or PNP/ NPN as secondary output
- **Temperature Stability:** Offers excellent temperature stability due to advanced digital compensation
- **High Accuracy:** Measuring accuracy of ±0.35%
- **Durable Construction:** Robust IP67 rated design, with optional cooling fins to handle continuous process temperatures above 150°C (302°F)

ORDER CODES	CONNECTION	RANGE
OPTIBAR PSM 2010	2" Triclamp	0-1 bar
OPTIBAR PSM 2010	2" Triclamp	0-10 bar

MPSLC101

Submersible Level Probe

The **ManuFlo MPSLC101** is a submersible level probe designed for continuous hydrostatic level measurement in water and wastewater applications. It is ideal for use in basins, wells, and other environmental engineering and OEM applications. The probe features a corrosion-resistant ceramic measuring cell and a robust stainless steel housing, ensuring long-term reliability and easy on-site cleaning.

KEY FEATURES:

- **Continuous Measurement:** Suitable for basins and wells, providing continuous hydrostatic level measurement
- **Durable Design:** Equipped with a high overload-resistant ceramic diaphragm and corrosion-resistant TPE cable approved for potable water applications
- **Wide Range:** Measures levels from 1 to 100 meters (3.3 to 328 feet) and pressures from 0.1 to 10 bar (1.45 to 145 psi)

- **Flexible Output:** 2-wire, 4...20 mA output with optional HART® communication for easy configuration
- **Easy Installation:** 22 mm (0.86") outer diameter for installation in DN25 (1") pipes and confined spaces, with a flush ceramic measuring diaphragm for safe and easy cleaning
- **Versatile Applications:** Ideal for water wells, rainwater retention, and overflow basins, with ATEX, IECEx zone 0 Ex ia certification



ORDER CODES	CONNECTION	RANGE
MPSLC101	Submersible	0-100 M H2O

Level Sensors



LW2720
PAGE 144



UIT507
PAGE 147



KLM103
PAGE 148



KLM076
PAGE 149

LW2720

Non-contact Radar Level Sensor

The **ManuFlo LW2720** is an electronic non-contact radar level sensor with PNP/NPN switching signal, analogue signal, and IO-Link capability. It is designed for accurate level measurement in various general tank applications. The sensor operates within a medium temperature range of -40 to 150°C and has a pressure rating of 8 bar.

CONNECTION:

- G1A

RANGE:

- 0-10 metres

APPLICATIONS:

- General tank level



LW2720 + E33208

Non-contact Radar Level Sensor with Triclamp

This model combines the **Manuflo Lw2720 Radar Level Sensor With A 1.5" Triclamp Ferrule** internal G1A connection, making it ideal for hygienic applications in the food and beverage industry. It offers the same features as the LW2720, including PNP/NPN switching signal, analogue signal, and IO-Link, with the added ease of cleaning and installation.

CONNECTION:

- 1.5" Triclamp

RANGE:

- 0-10 metres

APPLICATIONS:

- Food and Beverage, Milk, etc.



UGT507 + E20870

Ultrasonic Sensor with Mounting Set

The **ManuFlo UGT507 Ultrasonic Sensor** comes with a mounting set and is designed for small liquid tank level measurements. It features an M18 x 1/ L = 60.5 mm sensing range, with an IP67 rating and operates within a temperature range of -20 to 70°C. This sensor is suitable for use with DC power and provides an analogue output.

CONNECTION:

- Mounting Plate

RANGE:

- 0-1.2 metres

APPLICATIONS:

- Any small liquid tank level application



UIT507 + E10737

Ultrasonic Sensor with Mounting Plate

The **ManuFlo UIT507 Ultrasonic Sensor**, paired with a mounting plate, is designed for medium liquid tank level measurements. It has an M30 x 1.5 / L = 118.8 mm sensing range, supporting a distance of up to 8 metres. The sensor is equipped with a PNP/NPN output, IP67 rating, and operates within a temperature range of -20 to 70°C, making it ideal for a variety of medium-sized tank applications.

CONNECTION:

- Mounting Plate

RANGE:

- 0-8 metres

APPLICATIONS:

- Any medium liquid tank level application



KLM103

Ultrasonic Level Transmitter

The **ManuFlo KLM103** is a 2- or 4-wire ultrasonic level transmitter designed for basic level measurement applications. It provides continuous, non-contact level measurement of liquids and solids, making it ideal for a wide range of industrial applications. The device is particularly well-suited for small tanks and open channels for flow measurement.



KEY FEATURES:

- Measurement Range:** 0.25 to 5 metres (liquids) / 0.25 to 2 meters (solids)

- Temperature Range:** -40 to +80°C / -0.2 to 2 barg

- Security Integrity Level:** SIL 2

- Non-Contact Measurement:** Ensures maintenance-free operation by measuring levels without direct contact with the medium

- Versatile Applications:** Suitable for rainwater, wastewater, and bulk solids in various industries

- Corrosive Environment Compatibility:** Designed to withstand harsh conditions and corrosive environments

- Optional Mounting Bracket:** Available for easy sensor alignment

TECHNOLOGY	ORDER CODES	RANGE	CONNECTION
Ultrasonic	KLM103-5	5m	G1 1/2"
Ultrasonic	KLM103-8	8m	G2"

KLM076

Capacitance Level Switch

The **ManuFlo KLM076** is a versatile capacitance level switch designed for both hygienic and industrial applications, featuring IO-Link communication for quick and easy configuration. It is ideal for point level detection of liquids, solids, and liquid-liquid interfaces, making it suitable for a wide range of applications including overflow and empty tank prevention, as well as dry-run protection for pumps.



KEY FEATURES:

- IO-Link Interface:** Allows for quick configuration and automated sensor setup, with two freely programmable outputs (e.g. IO-Link/PNP, IO-Link/NPN, IO-Link/4-20 mA)

- Wide Temperature and Pressure Range:** Operates in temperatures from -40 to +115°C (extended length version up to +150°C), and non-hygienic versions can handle pressures up to 100 bar / 1450 psi

- Robust Design:** Stainless steel housing with PEEK sensor material ensures durability and easy cleaning, minimising the risk of clogging by sticky products

- Adaptable Installation:** Can be installed in any mounting position, with a variety of hygienic adapters available and options for sliding connections to accommodate thick tank walls or high process temperatures

TECHNOLOGY	ORDER CODES	RANGE	CONNECTION
Capacitance	KLM076-05	Point	G1 1/2"
Capacitance	KLM076-15	Point	1 1/2" Tri-clamp

KRS Series

Radar Level Transmitters

The **ManuFlo KRS Series** represents the pinnacle of radar level measurement technology, drawing on 28 years of experience in FMCW radar development. These transmitters are designed to cater to a wide range of applications, offering precision, reliability, and ease of use in various industrial settings.

KEY FEATURES:

- Advanced Design:** Developed from decades of radar measurement expertise, ensuring first-class performance
- Versatile Process Connections:** Available with an extensive choice of process connections starting from 3/4"
- High-Performance Antennas:** Equipped with Lens, Drop, and Horn antennas capable of measuring distances up to 100 metres (328 feet)
- Exceptional Accuracy:** Offers measurement accuracy from ±2 mm (±0.08")



- Broad Measurement Range:** Capable of measuring products with dielectric constants as low as 1.4
- User-Friendly Setup:** Features a quick setup assistant for easy commissioning and an empty tank spectrum function to eliminate false reflections
- Intuitive Interface:** Comes with a large backlit LCD display and a 4-button keypad, with text available in 12 languages
- Comprehensive Software:** Includes free PACTware™ DTM with full functionality for detailed configuration and diagnostics



KRS Series

Radar Level Transmitters



The **ManuFlo KRS Series** enhances ManuFlo's portfolio, offering highly reliable and accurate level measurement solutions for both liquids and solids, even in the most challenging applications.

TECHNOLOGY	ORDER CODES	RANGE	CONNECTION
Radar	KRS41	20m	G1"
Radar	KRS53	50m	2" Tri-clamp
Radar	KRS57	30m	G11/2" (PP Ant.)
Radar	KRS46	100m	G1" (PP Ant.)



Accessories



PUMPS

p.154



FILTERS

p.155



VALVES

p.156



CONNECTORS

p.157

Accessories

This equipment is especially suited to provide liquids in installations where a continuous flow is required and the liquid recirculates continuously.



Y-Strainer Cartridge



3 Way Ball Valve



Pumps



Solenoid Control Valve

Pumps



FEATURES:

- Built to cover a wide range of commercial, rural and domestic applications. suitable for pumping clean non-aggressive liquids without solids or fibres in suspension. Strong and durable
- Manufactured from moulded materials giving superior resistance to corrosion. 86304
- Efficient design produces greater flow whilst maintaining low power consumption

KEY FEATURES:

- **Maximum working pressure:** 410 kPa
- **Water temperature range:** 1 - 50°C
- **Maximum ambient temperature:** 55°C
- **Motor type:** TEFC 2 pole continuously rated
- **Nominal speed:** 2900 rpm
- **IP rating:** IP55

ORDER CODES	SIZE	SPECIFICATIONS	POWER SUPPLY	WATTS
ONGA413	1"	Single phase centrifugal pump 1/2hp, <15mtr to 120LPM	240vac	400
SJ35-04	1"	Single phase centrifugal pump. Head height to 25 mtrs IP55 motor. 2900 rpm. 2.3 Amps. to 80 Litres/min	240vac	370
XF171-S	1"	Single phase centrifugal pump, silicon carbide seals 17 mtrs	240vac	450

Filters, Y-Strainer Cartridge



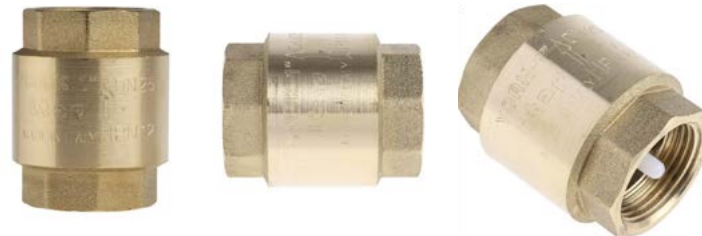
ORDER CODES	SPECIFICATIONS
A20/800	20mm Polyprop. Y-strainer Filter, with 800 micron nylon filter cartridge ¾" BSP-m
A20/300	20mm Polyprop. Y-strainer Filter, with 300 micron nylon filter cartridge ¾" BSP-m
FC-XXX	SPARE Filter Cartridge, FC-800 800micron for MES20, FC-300 300micron for MEA15
HRT20/400	20mm Plastic, Y-strainer Filter with 400 micron filter cartridge ¾"BSP-F swivel connection
HRT25/400	25mm Plastic, Y-strainer Filter with 400 micron filter cartridge 1" BSP-F swivel connection
HRT40/400	40mm Plastic, Y-strainer Filter with 400 micron filter cartridge 1½"BSP-F swivel connection SPARE Filters cartridges available HRT-FC20, HRT-FC25, HRT-FC40

Check Valves



ORDER CODES	SPECIFICATIONS
ACV20	20mm check valve. Polypropylene. Spring loaded. BSP (female) threaded
ACV25	25mm check valve. Polypropylene. Spring loaded. BSP (female) threaded

Check Valves



ORDER CODES	SPECIFICATIONS
15BSCV	1/2" Spring Check Valve. BSP (female). In-line. Brass
20BSCV	3/4" Spring Check Valve. BSP (female). In-line. Brass
25BSCV	1" Spring Check Valve. BSP (female). In-line. Brass

3 Way Ball Valve



ORDER CODES	SPECIFICATIONS
3WV20T	3/4" 3 Way Ball Valve (T-port) Nickle Plated Brass (or all SS-304) BSP (female)
3WV25T	1" 3 Way Ball Valve (T-port) Nickle Plated Brass (or all SS-304) BSP (female)

Manual Gate And Spring Check Valves



ORDER CODES	SPECIFICATIONS
T15GV	1/2" Gate Valve. BSP (female). Multi-turn. Brass
T20GV	3/4" Gate Valve. BSP (female). Multi-turn. Brass
T25GV	1" Gate Valve. BSP (female). Multi-turn. Brass

Connectors

for MES, MM and AMM Series Flowmeters



ORDER CODES	SPECIFICATIONS
SBU15	15mm Barrel Unions (Pair, QTY 2) BSP female ends. Polypropylene
SBU20	20mm Barrel Unions (Pair, QTY 2) BSP female ends. Polypropylene
SBU25	25mm Barrel Unions (Pair, QTY 2) BSP female ends. Polypropylene
SBU32	32mm Barrel Unions (Pair, QTY 2) BSP female ends. Polypropylene
SBU40	40mm Barrel Unions (Pair, QTY 2) BSP female ends. Polypropylene

Solenoid Control Valves (Metal)



ORDER CODES	SPECIFICATIONS
	Solenoid Valves - To order, you must also specify the coil voltage option <ul style="list-style-type: none"> Require 0.3 Bar min. pressure to operate. Up to 20 bar rating BSP (f) thread connections. Standard seals are NBR
D15	15mm Brass Diaphragm solenoid valve with 6.8W electric control coil N.C.
D20	20mm Brass Diaphragm solenoid valve with 6.8W electric control coil N.C.
D25	25mm Brass Diaphragm solenoid valve with 6.8W electric control coil N.C.
D32	32mm Brass Diaphragm solenoid valve with 6.8W electric control coil N.C.
D40	40mm Brass Diaphragm solenoid valve with 6.8W electric control coil N.C.
	Angle Seat Valves, 0 to 6 bar, BSP (f) threaded connection, air assisted
AS15	15mm Angle Seat Bronze solenoid valve with electric coil (normally closed) NBR seals
AS20	20mm Angle Seat Bronze solenoid valve with electric coil (normally closed) NBR seals
AS25	25mm Angle Seat Bronze solenoid valve with electric coil (normally closed) NBR seals
AS32	32mm Angle Seat Bronze solenoid valve with electric coil (normally closed) NBR seals
AS40	40mm Angle Seat Bronze solenoid valve with electric coil (normally closed) NBR seals
AS50	50mm Angle Seat Bronze solenoid valve with electric coil (normally closed) NBR seals
	Other seal options available
	Nominate Coil Voltages: 12VDC, 24VDC, 24AC, 110AC, 240AC

Electrical Accessories

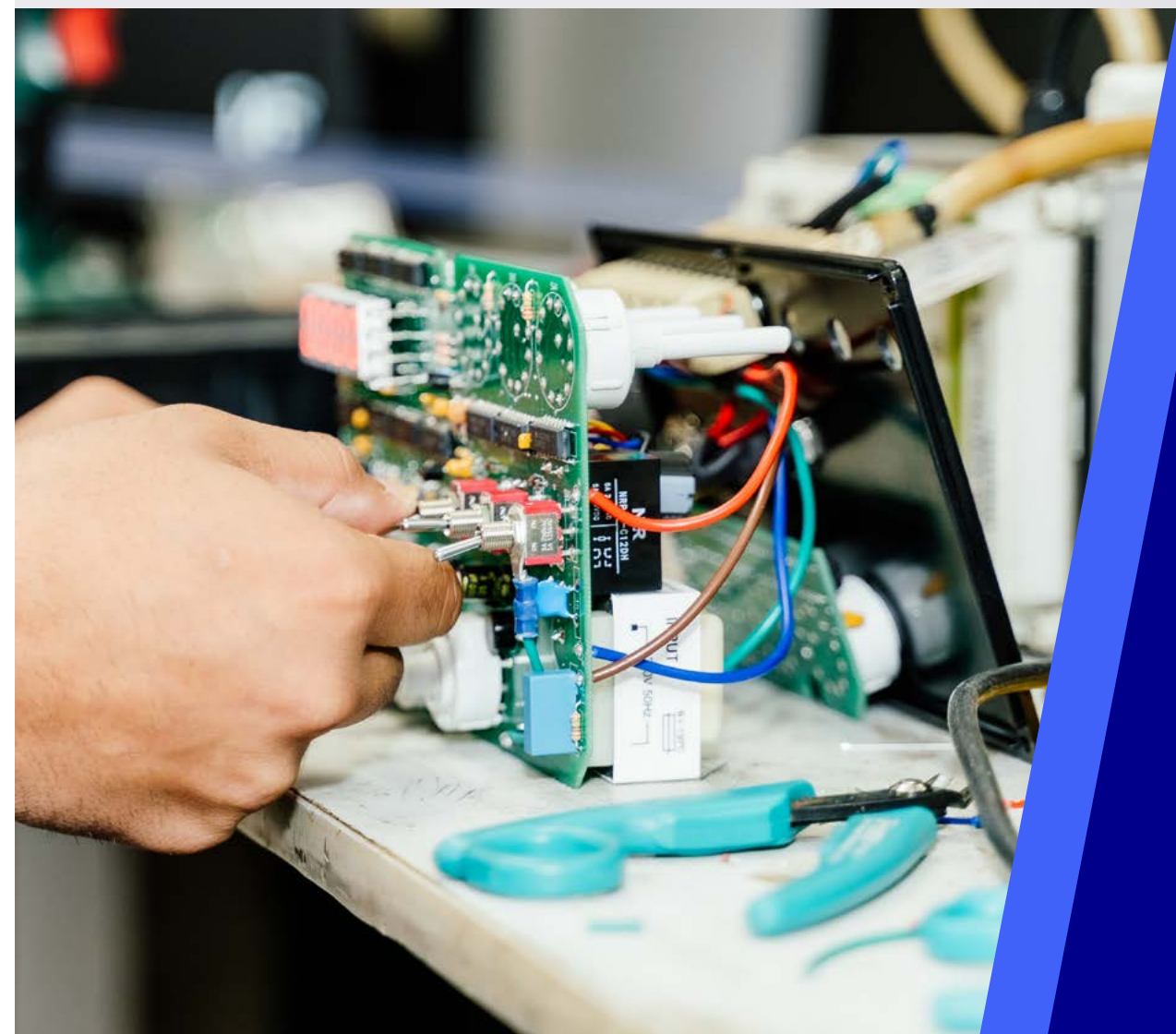
Contractors, Signal Cable and Power Supplies

ORDER CODES	SPECIFICATIONS
C240	Contractor GE N.O. 240vac 2 line, 4kW rating, industrial grade. (Ideal for isolation between ManuFlo controllers and 1 h.o. 1" single phase pump motor units)
W3020	Signal cable, light duty, 2 core wire braid screen shielded - 100m roll AWG27
W3040	Signal cable, light duty, 4-core wire braid screen shielded - 100m roll AWG27
W3028	Signal cable, heavy duty, 2-core wire braid screen shielded - 100m roll AWG24
W3029	Signal cable, heavy duty, 2-core wire braid screen shielded - 300m roll AWG24
WB-1575	Signal cable, light duty, 6-core screened - 100m roll
WB-1578	Signal cable, light duty, 9-core screened - 100m roll
240-24D-IP	24 VDC reg. pwr. supply pack, 240 vac source, 2 Amp in IP65 box - ideal for DC Magflows
DC12	12 VDC reg. pwr. supply pack, 240 vac source, up to 500 mA [MP-3011]
240-12	12 VDC reg. pwr. supply pack, 240 vac source, 1A, IP65 Enclosure - Ideal for UIC cards
CV12	12 VDC to 24 VDC power step-up converter. 2 Amp - Ideal for flowmeters
CV24	24 VDC to 12 VDC power converter module. 3 Amp
ENC	IP65 enclosure, 120mmx95mmx60mm. Ideal for housing UIC cards and used for FRT303 and ME5
240-24D	240 vac input to 24 VDC regulated output. DIN rail. 2.5 Amps - for DC Magflows [MP-3192]
JB	Junction Box IP65 rated 2way PG9 glanded entry (ideal for linking cables)



Service and Calibration

ManuFlo offers professional service and calibration for flowmeters and admixture dispensers, ensuring accurate performance and compliance across a range of applications, all backed by a 1-year warranty.



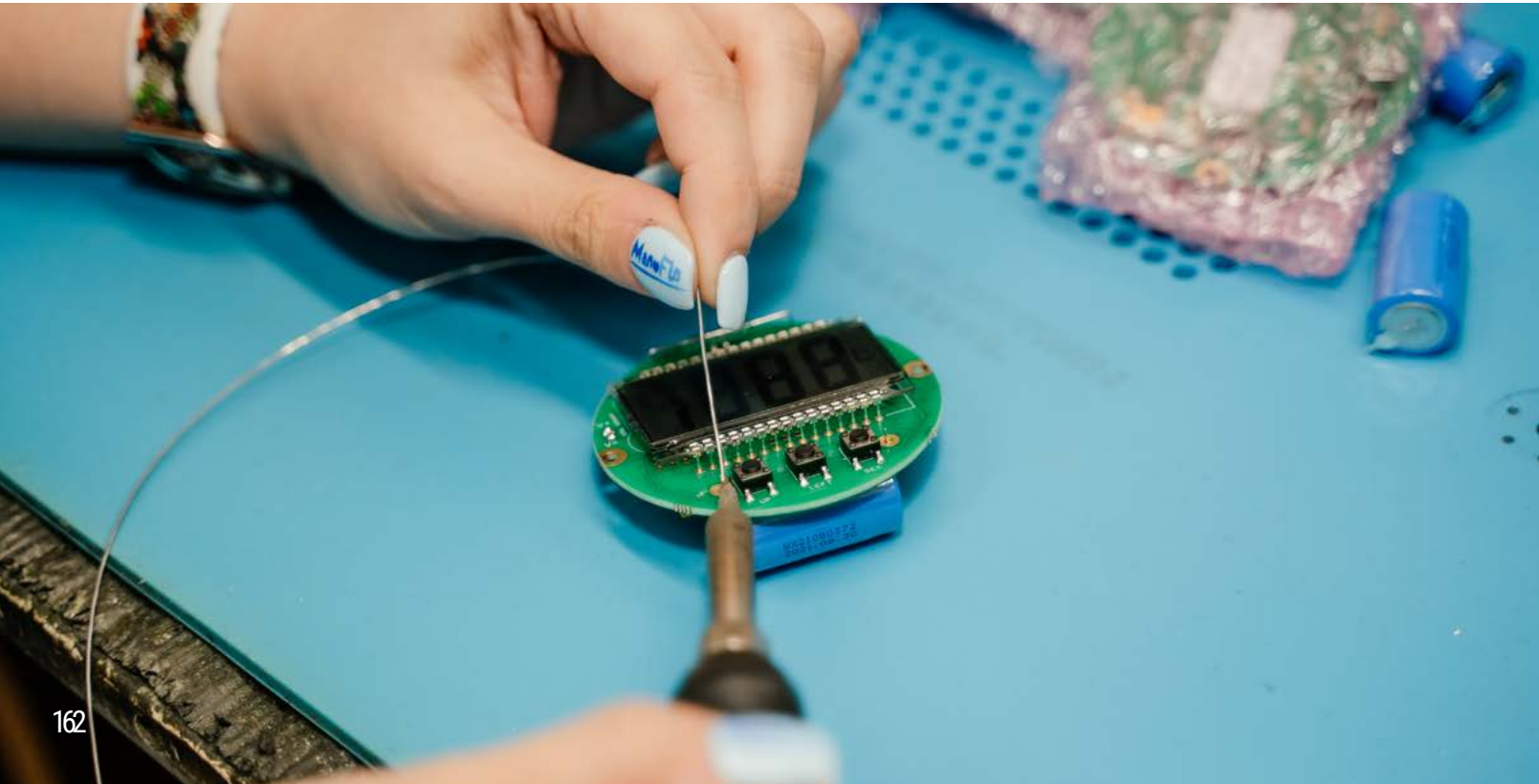
WWW.MANUFLO.COM

Repair Services

ManuFlo offers specialised repair services for various flowmeter models, including electromagnetic, vortex, Coriolis mass, thermal mass, and variable area flowmeters. Our skilled technicians use the latest diagnostic tools and provide comprehensive maintenance to ensure your flowmeters perform reliably. With a 12-month in-service warranty and rapid repair process, we minimise downtime and maximise efficiency. You can trust ManuFlo for transparent, competitive pricing and expert solutions to keep your flowmeters in peak condition.

Our comprehensive repair services cover all types of flowmeters, and each technician at ManuFlo is experienced and receives ongoing training to stay abreast of the latest advancements in flowmeter technology. We emphasise the importance of regular maintenance to extend the life of your flowmeter, ensuring consistent and precise measurements and preventing unexpected downtimes. Our streamlined repair process ensures that your flowmeter is repaired to the highest standard and returned to you in the shortest time possible.

For urgent requirements, we offer expedited repair services to minimise operational downtime. At ManuFlo, we prioritise transparency and affordability. We provide upfront estimates, ensuring that you have a clear understanding of the repair costs. Our pricing is competitive and reflects the quality and reliability of our services. By promptly identifying and addressing common flowmeter issues, we help ensure that your flowmeters maintain optimal performance. Choose ManuFlo for reliable, efficient, and cost-effective repair services



Repair Services

ORDER CODES	SPECIFICATIONS
Service-FRT303	General repairs and service for FRT303 indicators
Service-ME2000	General repairs and service for ME2000
Service-ME2008	General repairs and service for ME2008 8ch. interface cards
Service-DCPM	General repairs and service for DCPM
Service-ME3000	General repairs and service for ME3000 controllers
Service-ME5	General repairs and service for ME5 indicators
Service-ME995	General repairs and service for ME995 series batch controllers
Service-MES	General repairs and service for MES pulse output flowmeters
Service-MES-PulseHead	General repairs and service for MES PULSE HEADS
Service-MESLCD	General repairs and service for MESLCD resettable flowmeters
Service-MFS, RMS, KMS	General repairs and service for MFS, RMS, KMS Magmaster flowmeters
Service-MRP20 / MRPU4	General repairs and service for MRP20 / MRPU4 LCD reset flowmeters
Service-MRP20-MRPU4 with pipe	General repairs and service for MRP20 / MRPU4 LCD reset flowmeters fitted to pipe and calibrated
Service-MRT	General repairs and service for MRT range flowmeters
Service-TMP	General repairs and service for TMP / TMP1 ticket printing batch/monitor systems
Service-UIC	General repairs and service for UIC universal interface cards
Service-ME2000	General repairs and service for ME2000
Labour	Cost for technician to carry out service work, charged at hourly rate or part thereof
Inhouse-CAL-S	Wet test calibration on ManuFlo loadcell or calibration rig meter sizes up to 50mm dia
Inhouse-CAL-L	Wet test calibration on ManuFlo loadcell or calibration rig meter sizes up 80mm to 150mm dia



ManuFlo Advantages

- ✓ Economically priced products, with **Australian Quality Control**.
- ✓ Global pricelist with quantity discount structure.
- ✓ Free on-going product and application support.
- ✓ Simple to use, proven products with overdose or failure safety feature options.
- ✓ Direct volume delivery flow measurement, with no water flushing required.
- ✓ Stock and spare parts available on call.
- ✓ Data Sheets, Installation and Troubleshooting Guides and User Manuals.
- ✓ Company operating since 1965, with ongoing R&D program.
- ✓ Deal direct with the Manufacturer or its Representatives.
- ✓ Products with extreme longevity dispensing liquids for decades.
- ✓ Experienced staff understand clients' needs and applications
- ✓ Quality proven products with no compromises for the critical concrete industry.
- ✓ Online information and assistance **www.manuflo.com**

CONDITIONS OF SALE

1. Definitions

1.1 In these Terms and Conditions of Sale:

- a. "Agreement" means the agreement for supply of Equipment and/or Services between Manu Electronics and the Customer of which these "Terms and Conditions of Sale" form part.
- b. "Australian Consumer Law" means schedule 2 of the Competition and Consumer Act 2010 (Cth).
- c. "Charges" include all monies payable by the Customer to Manu Electronics in relation to the supply of Equipment or Services.
- d. "Customer" means the Customer named on the Quotation and includes the Customer's agents and permitted assigns.
- e. "Documentation" means the data sheets and user manuals containing information about the technical quality of the Equipment purchased from the Customer and their safe use to be used by the Customer for this purpose as made available to the Customer, including on the Website, from time to time.
- f. "Equipment" means the goods agreed to be supplied by Manu Electronics to the Customer as set out in each Quotation, and includes parts and supplies which may subsequently be supplied under any warranty given in relation to the Equipment.
- g. "Ex works" has the same meaning as is ascribed to that term in Incoterms 2020.
- h. "Intellectual Property Rights" means all industrial and intellectual property rights throughout the world, whether registered, unregistered or unregistrable, including all copyrights, patents, trademarks, service marks, designs, confidential information, trade secrets, know-how, data and databases, systems and domain names.
- i. "Manu Electronics" and "ManuFlo" means ManuFlo Pty Ltd ACN 652 812 292, its agents and assigns.
- j. "Price" means the price payable for the Equipment as set out in a Quotation.
- k. "Quotation" means a written quotation or purchase order issued by Manu Electronics which sets out the agreed terms of the supply of Goods and/or Services.
- l. "Services" means any services provided by Manu Electronics to a Customer as set out in an accepted Quotation.
- m. "Website" means Manu Electronics' website located at www.manuelectronics.com.au or such other website owned or controlled by Manu Electronics.

2. Conditions

2.1 These Terms and Conditions of Sale apply to the ordering, supply and delivery of Equipment and the provision of Services by Manu Electronics to the Customer to the exclusion of any other general terms and conditions attached to any customer generated purchase order or related document whether supplied before or after entry into this Agreement.

2.2 In the event that there is any conflict between these Terms and Conditions of Sale and any special condition expressly set out in a Quotation, the special condition set out in the Quotation will prevail only to the extent of such inconsistency.

3. No other representations

3.1 No brochure, product catalogue, price list, Documentation or other communication, whether published on the Website or forwarded by Manu Electronics to the Customer, is intended to form part of this Agreement or incorporate any warranty or represent as to the Equipment or Services to be provided to the Customer.

3.2 Manu Electronics makes no representations to the Customer that the Equipment detailed in an Order Request or publication will be available to the Customer at all times. The Customer acknowledges that all Equipment will be subject to availability and supplied only pursuant to the terms of an agreed Quotation.

CONDITIONS OF SALE

4. Orders

4.1 Upon receipt of a request for quotation or an order from a Customer, Manu Electronics will, if it is capable of fulfilling the order, provide to the Customer a Quotation containing:

- a. the Price for the relevant Equipment;
- b. details of the order number, product order code, a product description,
- c. the quantity of Equipment ordered and the delivery location;
- d. details of the Services ordered (where applicable);
- e. the anticipated delivery date; and
- f. any other proposed terms to be attached to the order.

4.2 Each Quotation will be deemed to be a separate offer by Manu Electronics to supply Equipment and/or Services on the terms of this Agreement.

4.3 If the terms of the Quotation are acceptable, the Customer must confirm acceptance of the Quotation to Manu Electronics. Confirmation of acceptance may be in writing, via payment of any part of an invoice issued under the Quotation or by acceptance of any of the Equipment or Services that forms part of the order. Any additional terms contained in, referred to or attached to any purchase order or confirmation provided by the Customer shall be void and have no effect.

4.4 A Quotation will become binding on the parties once accepted by the Customer in accordance with clause 4.3.

5. Delivery and Risk

5.1 Manu Electronics will use all reasonable endeavours to deliver the Equipment to the destination specified in the Quotation on or before the delivery date set out in the Quotation. Delivery of Equipment is complete upon its arrival at the location specified in the Quotation.

5.2 Subject to availability and pricing, deliveries in the Sydney Metropolitan Area will be by Fastway Couriers, and Australia-wide by Toll Express or, for shipments over 5 kg, by TNT; and international deliveries will be by DHL or TNT Economy Express. Choice of courier is at the discretion of Manu Electronics.

5.3 Risk in the Equipment passes to the Customer when the Equipment is loaded at Manu Electronics' Brookvale NSW premises of Manu Electronics for delivery to the Customer. Manu Electronics is not responsible nor liable for payment for damage to shipments that occurs whilst en-route from and to Manu Electronics and the Customer waives any claim against Manu Electronics with respect to such loss of damage.

5.4 Delivery dates represent an estimation in good faith of the date of delivery of the Equipment and are not binding on Manu Electronics. Under no circumstances shall Manu Electronics be liable for damages (including consequential special and incidental damages) for failure to deliver or delay in delivery howsoever occasioned.

5.5 If Manu Electronics is or may be unable to deliver the Equipment within a reasonable time or at all, Manu Electronics may at its sole discretion terminate the Quotation. In the event of termination, the Customer will be refunded the Price in full but otherwise shall not have, and waives in full, any other claim against Manu Electronics for any damage, loss or expense incurred as a result of such termination.

CONDITIONS OF SALE

5.6 Manu Electronics reserves the right to deliver the Equipment by instalments and to invoice the Customer for each instalment of Equipment delivered where, in the opinion of Manu Electronics, it is reasonable to do so.

5.7 Failure by the Customer to pay any instalment, or any other amount when due, shall entitle Manu Electronics to withhold or delay delivery of any remaining Equipment.

6. Product specifications

6.1 Manu Electronics endeavours to ensure that the descriptions and specifications in relation to the Equipment are accurate in all material respects. However, photographs, drawings, illustrations, weights, dimensions and any other particulars accompanying, associated with or given in a Quotation, Documentation, descriptive literature or a catalogue are based on information provided by manufacturers and suppliers and, as such Manu Electronics does not guarantee that those descriptions and specification are accurate or free from errors or omissions. Manu Electronics reserves the right to make any necessary corrections to change product specifications, pricing and technical information of the Equipment without prior notice.

6.2 To the extent permitted by law, any performance data provided by Manu Electronics is an estimate only and Manu Electronics accepts no liability for any failure in the Equipment complying with such performance data.

6.3 Any information provided by Manu Electronics in relation to the performance of Equipment represents only a guide as to the performance of the Equipment under standard industry operating conditions.

7. Use of Equipment

7.1 The Customer acknowledges that it is the Customer's responsibility to:

- a. check and test the Equipment for compliance with all relevant applicable standards and regulatory bodies, including but not limited to all Australian Standards, before use, on-sale or application; and
- b. assess whether the Equipment is fit for the purpose for which it is to be used by the Customer or end user.

7.2 The Customer:

- a. must install and operate the Equipment in accordance any Documentation and all applicable standards, regulations and guidelines, all recommendations and directions and good commercial practice; and
- b. is responsible for servicing and otherwise inspecting the Equipment and maintaining and replacing any consumable component of the Equipment in accordance with the Documentation, and acknowledges that Manu Electronics is not liable for any loss resulting from, or which would have been avoided but for, the Customer failing to comply with this clause.

9. Charges

9.1 The Customer will pay Manu Electronics the Price in respect of the supply of the Equipment, and the Charges in respect of the provision of the Services.

9.2 Unless specifically stated otherwise, all prices are manufacturer list prices ex-works (Brookvale NSW Australia), expressed net of any applicable freight and insurance charges, customs duty, and (for Australia only) GST, which shall be added to the amount to be paid by the Customer. Prices are subject to change without prior notice.

CONDITIONS OF SALE

9.3 Account customers shall pay to Manu Electronics all Charges within thirty (30) days from the invoice date, unless otherwise agreed in writing, without reduction or deferment on account of any claim, counterclaim or setoff.

9.4 Payment shall be by Visa/Mastercard, direct deposit or, for approved customers, by cheque. Where payment is by Visa/Mastercard, Manu Electronics may at its sole discretion add a 2% merchant surcharge to the price. VISA/Mastercard orders are limited to AUD\$3,000.00. Where payment is by Direct Deposit, the Customer shall fax or e-mail a payment advice to Manu Electronics on the day of the deposit, quoting the relevant invoice or Quotation number if available as a reference. International payments shall be by International Money Transfer/Electronic Funds Transfer with faxed or e-mailed payment advice.

9.5 Notwithstanding anything else appearing in the Agreement, all Charges shall immediately become due if the Customer fails to make any payment when due, becomes subject to the bankruptcy laws or enters into any composition with its creditors or enters into liquidation or suffers a receiver and manager to be appointed to all or part of its assets.

10. Property in Equipment purchased

10.1 Manu Electronics shall retain title to the Equipment until it has received payment in full for them.

10.2 Until the legal and equitable title to the Equipment passes to the Customer, the Customer shall:

- a. hold the Equipment as bailee of Manu Electronics returnable at will and without prior demand by Manu Electronics;
- b. upon demand by Manu Electronics immediately deliver up the Equipment to Manu Electronics; and
- c. hereby authorises Manu Electronics to enter without notice upon the premises upon which the Equipment are stored for the purpose of taking possession thereof.

10.3 The Customer shall be liable for any damage arising from or in connection with the recovery of possession of the Equipment by Manu Electronics.

11. Intellectual Property

11.1 The Intellectual Property Rights in any of the Equipment and the Services, and all documentation, drawings and specifications of the Equipment supplied under this Agreement are and shall remain the property of Manu Electronics.

11.2 The Customer must do all things that Manu Electronics reasonably requires to perfect Manu Electronics' right, title and interest in and to the Equipment.

11.3 The Customer shall use reasonable endeavours to prevent any infringement of Manu Electronics' Intellectual Property Rights in relation to the supply of the Equipment or the Services and shall promptly report to Manu Electronics any such infringement that comes to its attention.

12. Equipment Warranty and Limitation of Liability

12.1 Manu Electronics warrants that the Equipment and the Services will be free from defects in materials and workmanship under normal use as described in the Documentation for:

- d. 12 months from the date of dispatch to the Customer of new Equipment;
- e. 3 months for any component or Equipment repaired or replaced outside of any warranty period offered under

CONDITIONS OF SALE

12.1

- a. from the date of dispatch back to the Customer, provided that such warranty shall only apply to the repaired or replaced component and not the Equipment as a whole; and
- b. 30 days from the date of completion of the Services, in relation to the provision of any Services, (Limited Warranty).

12.2 This Limited Warranty will apply, as it relates to Equipment, only if the Customer has purchased the Equipment from Manu Electronics or its authorised resellers.

12.3 To the extent permitted by Australian Consumer Law and any applicable local law:

1. Manu Electronics' obligations under this Limited Warranty is limited to the repair, replacement or refund of covered parts that prove defective under normal use during the Limited Warranty and does not extend to any claim for damages that the Customer or any other person may have for any loss (including without limitation consequential damages or loss of profit, freight/shipping or travel costs other than pursuant to clause 12.5), or damage howsoever caused whether or not such loss or damage arises as a result of any defect in the Equipment or Services or from the failure or omission on Manu Electronics' part to comply with any obligation at law;
2. in replacing a defective product under the Limited Warranty, Manu Electronics may, at its discretion, substitute a model of equivalent nature where the exact model is unavailable;
3. this Limited Warranty does not apply to damage caused by failure and damage caused by improper installation by the Customer or its personnel or any other third party, improper use and abuse, fair wear and tear, accidents, misuse (including failure to follow instructions regarding care and maintenance of the Equipment), neglect, disassembly, alterations or external causes such as, but not limited to, water damage, exposure to excessive force, anomalies in the electrical current supplied to the Equipment, and extreme thermal or environmental conditions that exceed those set out in the Documentation;
4. Manu Electronics may elect, at its discretion and as an alternative to repairing or replacing a defective part to refund the cost of the relevant Equipment upon it being returned to Manu Electronics; and
5. this Limited Warranty does not extend to:
 - a. any products acquired for the purposes of re-supply, or for use in manufacturing or repair processes; or
 - b. the provision of any services by Manu Electronics, and to the extent permitted by law, Manu Electronics expressly disclaims any liability with respect to the provision of any services to the customer.

12.4 This warranty may be claimed by returning the product to its place of purchase, with a detailed proof-of-purchase clearly showing the date and detail of the purchase.

12.5 If after examination, Manu Electronics is satisfied that the Customer has a valid warranty claim, then Manu Electronics will be liable pay for transportation charges return leg back to the Customer only (method and courier selected by Manu Electronics).

12.6 For Equipment repaired under warranty, the Warranty Period for repaired or replaced parts shall not exceed the warranty period applicable to the Equipment originally delivered.

CONDITIONS OF SALE

12.7 If the Australian Consumer Law applies to the supply of goods or services under this Agreement, Manu Electronics acknowledges and agrees that its goods and services also come with a guarantee that cannot be excluded under the Australian Consumer Law, and that the following mandatory notice under section 102(1) of the Australian Consumer Law that must be provided to the Customer will apply:

Our goods and services come with guarantees that cannot be excluded under the Australian Consumer Law. For major failures with the service, you are entitled:

- to cancel your service contract with us; and
- to a refund for the unused portion, or to compensation for its reduced value.

You are also entitled to choose a refund or replacement for major failures with goods. If a failure with the goods or a service does not amount to a major failure, you are entitled to have the failure rectified in a reasonable time. If this is not done you are entitled to a refund for the goods and to cancel the contract for the service and obtain a refund of any unused portion. You are also entitled to be compensated for any other reasonably foreseeable loss or damage from a failure in the goods or service.

12.8 This Limited Warranty is the sole and exclusive warranty as regards products sold, and Services delivered, by Manu Electronics and all other express or implied warranties or implied representations are to the extent permitted by law, excluded.

13. Refunds and returns

13.1 To the extent permitted by law, Manu Electronics will only replace returned Equipment if:

- a. the Equipment is defective and the Customer complies with the provisions of clause 12; or
- b. Manu Electronics agrees in writing, at its discretion, to accept the return of the Equipment.

13.2 Where Manu Electronics have agreed to replace or refund any Equipment (whether defective or not), the Customer must:

- c. pack the Equipment in their original packaging, including any accessories, manuals, documentation or registration shipped or supplied with the Equipment;
- d. return the Equipment to Manu Electronics either in-store, or via courier in their original condition, where original condition means the Equipment has not sustained any damage and have not been fitted or installed; and
- e. bear any costs associated with returning the Equipment to Manu Electronics.

13.3 If, at its absolute discretion, Manu Electronics agrees to accept the Equipment in the case of a change of mind, Manu Electronics may issue a replacement of the Equipment or a refund.

13.4 All Equipment must be returned in their original condition. All postage and insurance costs are to be incurred by the Customer. Any freight or delivery costs paid on the original Quotation is non-refundable.

13.5 Where the Equipment is refunded due to a change of mind, Manu Electronics may charge the Customer an additional re-stocking charge of the returned Equipment.

CONDITIONS OF SALE

14. Indemnity

14.1 The Customer indemnifies, defends and holds harmless Manu Electronics, its employees, officers, authorised representatives and agents (Indemnified Parties) against any claim or proceeding that is made, threatened or commenced, and any liability, loss, damage or expense (including reasonable legal costs on a solicitor and own client basis) that the Indemnified Parties may incur or suffer as a direct or indirect result of:

- a. the Customer's non-payment of the Price or any additional service fees;
- b. any use of the Equipment which is inconsistent with the Documentation provided;
- c. the Customer's negligent acts or omissions; or
- d. any claims brought by or on behalf of a third party relating to any act or omission by the Customer.

15. Force Majeure

15.1 Manu Electronics will not be liable for any loss or damage suffered by the Customer due to any delay or any breach or default under the Agreement in circumstances where such delay, breach or default results from causes beyond Manu Electronics' reasonable control including but not limited to any beach or default under the Agreement by the Customer, compliance with any laws, regulations, orders, acts, instructions or priority requests of governments, acts of God, fires, floods, weather, strikes, lockouts, factory shutdown or alterations, embargoes, wars, riots, delay or shortage in transportation or inability to obtain labour, manufacturing facilities, electricity or other materials from Manu Electronics' usual sources.

16. Dispute Resolution

16.1 The Agreement shall be governed by the laws of the State of New South Wales and the parties shall submit to the jurisdiction of the Courts of that State.

16.2 Prior to the institution of any legal proceedings, or any referral to arbitration, any dispute, controversy or claim arising out of or relating to this Agreement or the breach, termination of invalidity of it shall first be the subject of mediation administered by a mediator agreed to by both parties. In the event that the parties fail to agree on a mediator within fourteen (14) days of written notification of a dispute, controversy or claim, then mediation shall be administered by the Australian Commercial Disputes Centre Limited (ACDC).

16.3 In the event that the dispute, controversy or claim has not been resolved within twenty-eight (28) days after the appointment of the mediator (or such other period as agreed to in writing between the parties), the dispute, controversy or claim, at the election of either party, may be submitted to arbitration, administered by ACDC. The arbitrator shall not be the same person as the mediator and shall be agreed between the parties from a panel suggested by ACDC, or, failing agreement, an arbitrator appointed by ACDC.

16.4 Any mediation or arbitration meetings shall be held in Sydney, Australia.

17. Notices

17.1 If any condition in these Terms and Conditions of Sales requires the Customer to give notice in writing, the Customer can send this to Manu Electronics by post or email at the address set out on the Website. Manu Electronics will confirm receipt of this by contacting the Customer in writing, normally by email.

CONDITIONS OF SALE

18. General

18.1 Manu Electronics may amend or vary these Terms and Conditions of Sale at any time by written notice to the Customer. If the Customer continues to accept Quotations after receiving notice of the updated terms the Customer will be deemed to have accepted the updated terms.

18.2 If any provision or paragraph of this document is determined to be illegal and unenforceable it shall not affect the enforceability of any other provision or paragraph of this document.

18.3 Headings are included for ease of reference and do not form part of or effect interpretation of these conditions.

ManuFlo ^{R(TM)}

Go with the Flow

www.manuflo.com



REACH OUT TODAY

visit www.manuflo.com



WWW.MANUFLO.COM

+612 9905 4324 • 41 Carter Rd, Brookvale Sydney NSW 2100 Australia • info@manuflo.com