

**FEATURES:-**

- 5 digit LCD function display for Instantaneous Flowrate
- Fully programmable functions.
- Internal Battery, or external 5-25 VDC or 240 vac supply input pwr options.
- IP65 wall mountable enclosure with flip up lid to protect LCD from weather.
- User friendly and fully programmable functionality.
- Maximum ambient Temperature 55 °C.
- Made in Australia by ManuFlo.
- Compatible with most pulse output flowmeters.
- Made in Australia by ManuFlo.

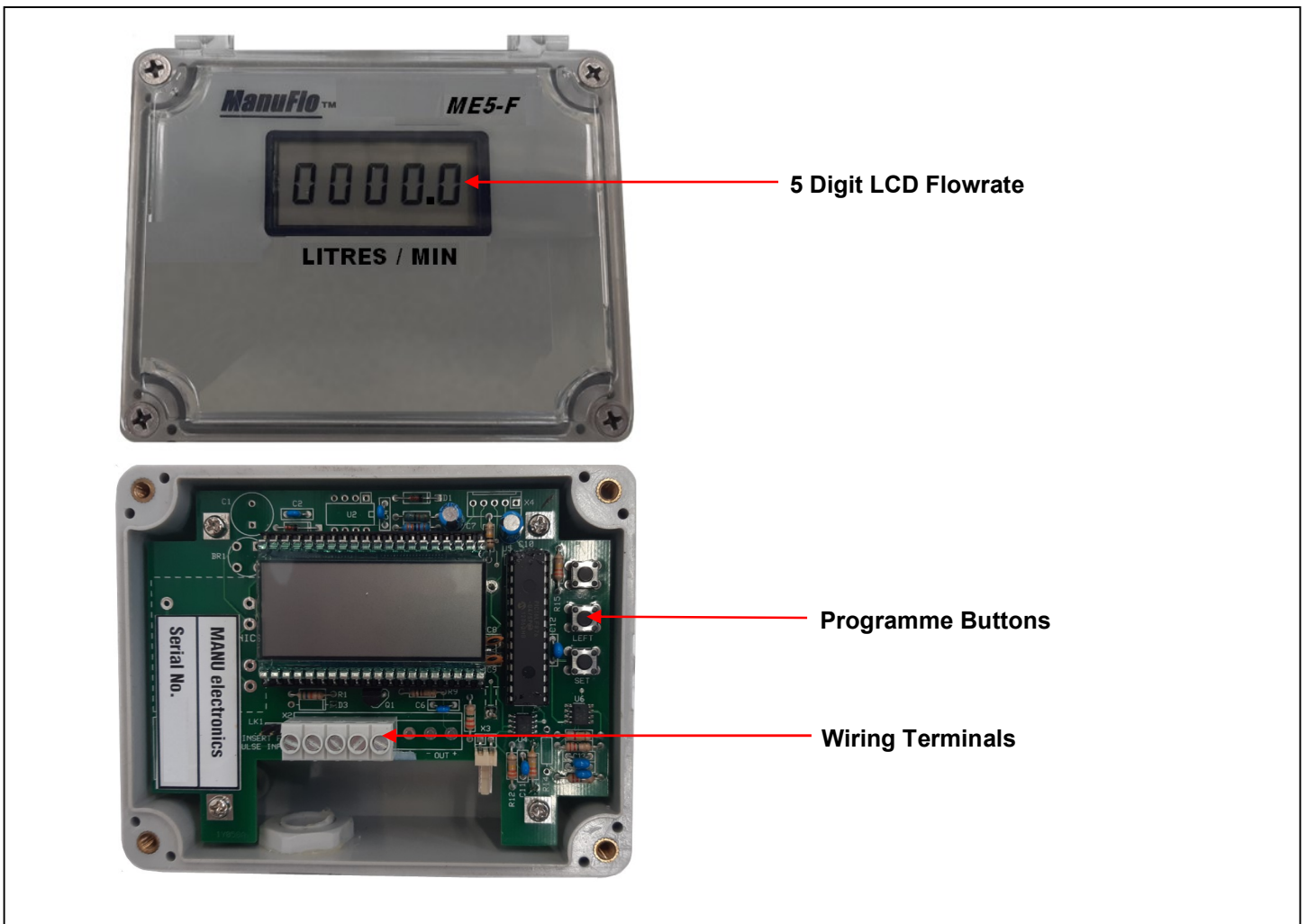


The *ME5-F* digital indicator is designed to operate with most pulse/signal output or coil output flowmeters, providing an instantaneous Flowrate reading in chosen engineering units. Power is via either: an internal Lithium battery which has a typical life of up to 10 years or optional external 5-25 VDC, or 240 vac. The *ME5-F* will accept flowmeter input pulses from 0.2 up to 2000 Hz.

The *ME5-F* is housed in a compact IP66 Polycarbonate enclosure with moulded mounts, which allows it to be used in a wide range of field applications. All application parameters are pre-programmed according to customer requirements, including display unit preferences and flowmeter K-factor. Scaling can be recalibrated in situ if necessary, using the internal operator buttons.

**SPECIFICATIONS****ME5-F**

<b>Display Type</b>	LCD
<b>Display Readout Total</b>	5 digits (10mm x 5mm) up to 2 decimal places. Units available in Millilitres, Litres, Kilolitres or Megalitres per Second, Minute or Hour (subject to flowmeter ranges)
<b>Programming</b>	menu driven by 3 internal push buttons
<b>Power Supply Options</b>	Option 1: 3.6v replaceable lithium battery (typically in excess of 10 year life) Option 2: 240 VAC or Option 3: +5 to 25 VDC
<b>Display Housing Ingress</b>	IP65 waterproof, Sealed Polycarbonate enclosure with hinged lid and 4 x 316 stainless steel screws for access to programming and wiring terminals.
<b>Max. Ambient Temperature</b>	55 °C
<b>Pulse Input (compatibility)</b>	NPN 5-25VDC, Voltage free switching or optional coil sensor configured input. 0.2 to 2,000 Hz (note: minimum 2Hz is required for stable flow rate readings)
<b>Pulse Output</b>	NOT AVAILABLE WITH THIS MODEL (see other ManuFlo Option ME4-F-P)
<b>Enclosure Dimensions:</b>	95mm (H) x 120mm (W) x 60mm (D) Fastening lugs with 127mm centers
<b>Electrical Connection</b>	1 or 2 IP67 cable gland entries, plug-in screw terminals
<b>Weight (unpacked)</b>	0.4 kg

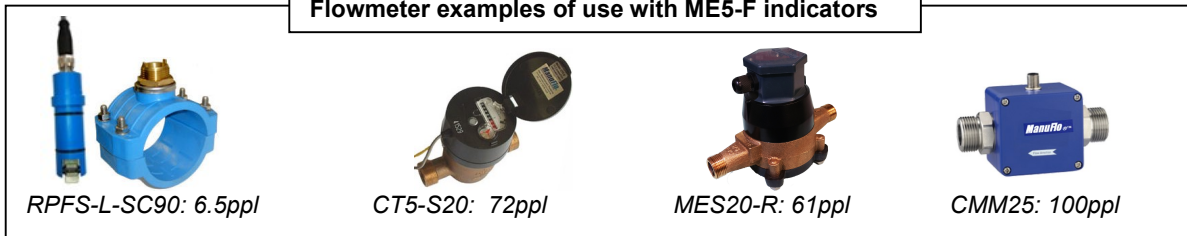


5 Digit LCD Flowrate

Programme Buttons

Wiring Terminals

Flowmeter examples of use with ME5-F indicators



RPFS-L-SC90: 6.5ppl

CT5-S20: 72ppl

MES20-R: 61ppl

CMM25: 100ppl

ORDERING INFORMATION

ME5-F FLOWRATE LCD Indicator – Product Order Codes

ME5 – F	– power	– No. decimal places	– units/ measure	– units/time
	↑	↑	↑	↑
Battery	= B	0	Millilitres = ML	S = Seconds
External DC power	= D	1	Litres = L	M = Minutes
External AC power	= A	2	Kilolitres = KL	H = Hours
			Megalitres = ML	

e.g. "ME5-F-D-2-L-M" is ME5-F Flowrate Indicator, externally DC powered, with display to 2 decimal place showing Litres per Minute

**Footnote:** ME5-F-A (AC powered version) cannot be used with 24vdc Magnetic Flowmeters, instead procure separate 240-24vdc power adaptor and or use with ME5-F-D (DC powered version).

\* Refer Separate Instruction manual for Programming of ME5-F.