

Please visit our website at
www.manuelelectronics.com.au

ManuFlo launches FRT303 Flowrate/Totaliser LCD Indicator

Special points of interest:

New products–

- * Indicators, Electromagnetic Flowmeters, Remote Monitoring.

- * Updated web pages!

Now available is ManuFlo's exciting new product – the FRT303 Flowrate Totaliser is designed to operate with a wide range of pulse/signal output or coil output flowmeters, providing an:

- * instantaneous Flowrate reading, and
- * a resettable Total display and Grand Total.

The FRT303 is applicable for many applications including irrigation, plant processes, and continuous dosing applications for shotcreting, pugmills etc.

To toggle the FRT303's LCD display between the Total and the Grand Total, simply touch the front panel button once. To reset the Total, touch the front panel button twice.

Power is via either: an internal Lithium battery which has a life of up to 10 years; external 5-25 VDC supply; or loop powered.

The FRT303 has fully programmable optional features including pulse output, 4-20mA output, and Hi-Low flow setpoint outputs (for proportional valve control or setpoint alarms). All functions are entered via internal keypads and a menu display.

The LCD can be programmed to show flowrate and totals in a number of different units. A hinged lid protects the LCD from ultraviolet light.

All application parameters will be pre-programmed according to your requirements, including display unit preferences and the flowmeter K-factor.

The FRT303 will accept flowmeter input pulses from 0.2Hz to 2kHz.

The FRT303 is housed in a compact IP65 Polycarbonate enclosure with molded mounts, allowing it to be used in a wide range of applications.



The FRT303 displays Flowrate, Resettable Total, and Grand Total.

Inside this issue: (click on the page number)

New FRT303 Flowrate and Totaliser Indicator	1
New Products from ManuFlo's extensive R&D	1
RMS Electromagnetic Flowmeter	2
Updated Web Pages	2
New ME5 Flowrate or Total Indicator	2
New ME8000 Remote Tank Level Monitoring	3

See datasheet at http://www.manuelelectronics.com.au/pdfs/FRT303_datasheet_2p.pdf

New products from ManuFlo's extensive R&D

ManuFlo strives for continuous product improvement. Extensive R & D efforts at ManuFlo in 2003 have produced a string of new products that are now available or coming soon.

This newsletter describes the now available FRT303 Indicator, the range of RMS Electromagnetic Flowmeters,

the ME5-T Totaliser Indicator, the ME5-F Flowrate Indicator, and the ME8000 Remote Tank Level Monitoring System which communicates using SMS messages via GSM/CDMA mobile networks.

Coming soon is the ME3000, which is the next generation of ManuFlo Batch Controller, with

front panel touch button entry of settings and controls for simple setup.

Front panel indicators will include LED indications and a 2 line 16 character LCD with backlighting. The display shows both the target batch quantity and the quantity dispensed so far for the batch.

RMS Electromagnetic Flowmeters--Excellent Performance!

The RMS Electromagnetic Flowmeters, with no moving parts and an obstruction-less bore, offer the highest level of performance, unaffected by specific gravity or viscosity variations, or the most contaminated of fluids, whilst maintaining a high degree of accuracy for liquid flow Measurement.

Application examples include use in tradewaste, water-based admixtures, recycle /slurry water batching in readymixed concrete plants, bulk chemical delivery tanker loading and transfers, and pharmaceutical and metalurgical applications.

Almost any liquid can be measured (which has a conductivity of at least 5 microsiemens) to an accuracy of $\pm 0.5\%$ of reading, and over a very wide flow range.

The RMS range of Electromagnetic Flowmeters is available in standard sizes from 4mm to 150mm diameter, with a standard integral wafer mount cast iron sensing tube lined in standard ETFE Tefzel, with stainless steel electrodes.

The IP66-rated transmitter housing is integrally head mounted to the sensor tube (standard), or remotely connected by a low voltage cable.

Power is 90-250 VA (standard), or optional 15-50 VDC. Units are fully programmed and wet tested.

Standard features are pulse output, 4-20mA output, empty pipe indication and Hart Communication.

Optionally, a M4 (LOI) Flowrate Totaliser display module can be fitted for visual process indication, and to allow reprogramming. Other options include different liner / electrode materials and remote mounted transmitters.

The units can also optionally be fitted with mounting pipe



RMS
Electromagnetic
Flowmeter

flanges and earthing rings, and be electrically wired. This fitout allows for even easier installation and commissioning.

See datasheet at <http://www.manuelectronics.com.au/pdfs/RMS.pdf>

Updated Web pages! Please visit our website at "www.manuelectronics.com.au"

To provide you with better product details, our website has recently had significant updates (see the left of the main web page for the links with the coloured bullets) .

The [General Product Summary Guide](#) and its sub-pages has been revamped with extra information and product photos, to help make product selection easier.

The [News and Whats New](#) page describes newly-released products, [sales specials](#), and news items on our customers or installations.

If you are unsure of the product for your application, then to help us serve you better, please do make use of our [Quotation Request Form](#). Answer as many applicable questions as you can, then submit the completed form to us via the web page.

We can then select the Indicator / Batch Controller / Flowmeter / equipment that is best for your application, and will quickly fax you back a quote and product datasheets.

Also, most of our product datasheets are available in [PDF format](#) for download from our website.

"We believe that our success in serving our valued clients for over 35 years is due to our premium product, supply, service and support capability."

*Manager and Director
Mr Alex Manu*

ME5-T (Totaliser) and ME5-F (Flowrate) Indicators

The ME5 5 digit LCD indicator is designed to operate with a wide range of pulse/signal output or coil

one of a number of different indicated values. In the ME5-T, the Totaliser total is reset by simply pushing the

in a compact IP65 Polycarbonate enclosure with moulded mounts, which allows the ME5 to be used

output flowmeters.

- ME5-F provides an instantaneous Flowrate reading.
- ME5-T provides a resetable Total display.

The ME5 is supplied with the LCD display programmed in

lid button once.

Power is via either an internal Lithium battery with a life of up to 10 years, or via external 5-25 VDC supply or 240 vac supply. The ME5 will accept flowmeter input pulses from 0.2 to 2,000 Hz, and is housed

in a wide range of field applications.

All application parameters will be pre-programmed according to your requirements, including display unit preferences and the flowmeter K-factor. Scaling can be recalibrated if necessary, using internal key pads.



ME5-T Totaliser Indicator
with resetable Total

See ME5-T Totaliser Indicator datasheet at http://www.manuelectronics.com.au/pdfs/ME5_T_datasheet.pdf
See ME5-F Flowrate Indicator datasheet at http://www.manuelectronics.com.au/pdfs/ME5_F_datasheet.pdf

ManuFlo®
FLOW MEASUREMENT PRODUCTS
 A division of Manu Electronics Pty Ltd

41 Carter Road,
 Brookvale NSW 2100 Australia

Phone: +61 2 9938-1425 or
 +61 2 9905-4324

Fax: +61 2 9938-5852

Email:
sales@manuelectronics.com.au

Please visit our website at
www.manuelectronics.com.au

"Ventis secundis, tene cursum"



MRPU4-GAL50M Flowmeter



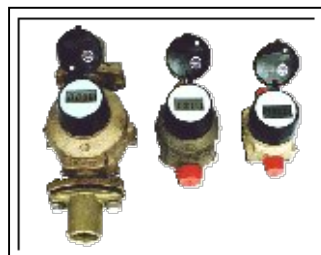
ME995-7 Batch Controller



ME2000 Safety Batch Counter
 Management Unit



MES20LCD4-S Flowmeter with
 Ryton-MTL Chamber



MESLCD Positive
 Displacement Flowmeters

Flowmeters,
 Resettable Flowmeters,
 Batch Controllers,
 Flowrate/Total
 Indicators,
 Monitoring Systems,
 and more ... IN STOCK!

ME8000 Remote Tank Level Monitoring System

The ME8000 automates the inventory and supply of chemical stock levels across multiple sites. It time stamps every batch quantity, and records the last 1000 operations - ideal for traceability of batches.

Site status and tank levels can be remotely verified from an office PC location and in the field via mobile phones.

The ME8000 is easy to set up, install and control via simple SMS messages. There is minimal extra wiring needed to monitor and control a site.

The ME8000 uses SMS text messages to send immediate

unsolicited reports of alarms (e.g. low tank level), direct to the mobile phones of selected personnel e.g. delivery driver, dispenser technician.

A site can also be remotely controlled by any authorised SMS-capable mobiles.

Communication is via GSM (metropolitan) or CDMA (rural) mobile networks to an office PC and/or mobile phones.

The ME8000 incorporates into existing ManuFlo (or other) Admixture systems e.g. to ME2000, UIC/A or ME995.



ME8000 remotely verifies site status and tank levels, from an office PC or in the field via mobile phones.

See datasheet at http://www.manuelectronics.com.au/pdfs/me8000_datasheet.pdf
See presentation at http://www.manuelectronics.com.au/pdfs/ME8000_presentation.pdf

[Go to Page 1](#) | [Go to Page 2](#) | Page 3 | [Home](#)